



[Go to Product page](#)

Datasheet for ABIN7268366

## anti-HLA-A antibody

### 3 Images

#### Overview

|              |   |
|--------------|---|
| Quantity:    | 100 µL  |
| Target:      | HLA-A   |
| Reactivity:  | Human   |
| Host:        | Rabbit  |
| Clonality:   | Monoclonal  |
| Conjugate:   | This HLA-A antibody is un-conjugated  |
| Application: | Western Blotting (WB), Immunohistochemistry (IHC), Immunoprecipitation (IP) |

#### Product Details

|                   |  |
|-------------------|--|
| Purpose:          | HLA-A Rabbit mAb                               |
| Immunogen:        | A synthesized peptide derived from human HLA-A |
| Isotype:          | IgG  |
| Cross-Reactivity: | Human  |
| Characteristics:  | Monoclonal Antibodies                          |
| Purification:     | Affinity purification                          |

#### Target Details

|                   |   |
|-------------------|---|
| Target:           | HLA-A   |
| Alternative Name: | HLA-A ( <a href="#">HLA-A Products</a> )  |
| Background:       | HLA-A belongs to the HLA class I heavy chain paralogues. This class I molecule is a |

## Target Details

---

heterodimer consisting of a heavy chain and a light chain (beta-2 microglobulin). The heavy chain is anchored in the membrane. Class I molecules play a central role in the immune system by presenting peptides derived from the endoplasmic reticulum lumen. They are expressed in nearly all cells. The heavy chain is approximately 45 kDa and its gene contains 8 exons. Exon 1 encodes the leader peptide, exons 2 and 3 encode the alpha1 and alpha2 domains, which both bind the peptide, exon 4 encodes the alpha3 domain, exon 5 encodes the transmembrane region, and exons 6 and 7 encode the cytoplasmic tail. Polymorphisms within exon 2 and exon 3 are responsible for the peptide binding specificity of each class one molecule. Typing for these polymorphisms is routinely done for bone marrow and kidney transplantation. Hundreds of HLA-A alleles have been described. [provided by RefSeq, Jul 2008],HLAA,Immunology & Inflammation,HLA-A

|                   |  |
|-------------------|--|
| Molecular Weight: | 41kDa  |
| Gene ID:          | 3105   |
| UniProt:          | <a href="#">P01891</a>   |
| Pathways:         | <a href="#">TCR Signaling</a> , <a href="#">Regulation of Leukocyte Mediated Immunity</a> , <a href="#">Positive Regulation of Immune Effector Process</a> , <a href="#">Cancer Immune Checkpoints</a> |

## Application Details

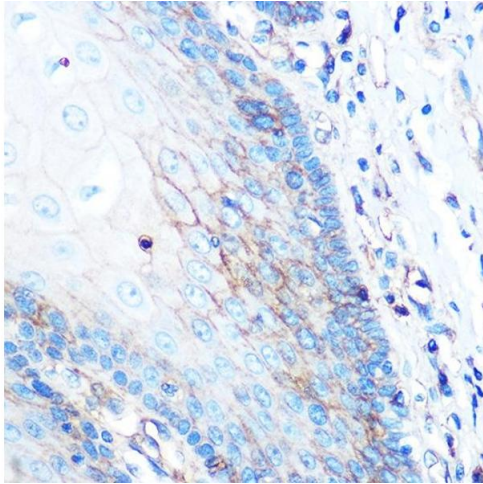
---

|                    |  |
|--------------------|--|
| Application Notes: | WB,1:500 - 1:2000,IHC,1:50 - 1:200,IP,1:50 - 1:200 |
| Restrictions:      | For Research Use only                              |

## Handling

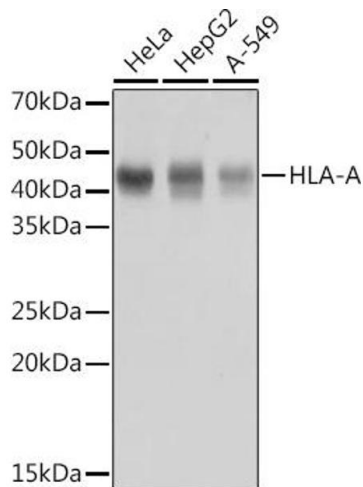
---

|                    |  |
|--------------------|--|
| Format:            | Liquid   |
| Buffer:            | PBS with 0.02 % sodium azide,0.05 % BSA,50 % glycerol, pH 7.3.   |
| Preservative:      | Sodium azide   |
| Precaution of Use: | This product contains Sodium azide: a POISONOUS AND HAZARDOUS SUBSTANCE which should be handled by trained staff only. |
| Storage:           | -20 °C   |
| Storage Comment:   | Store at -20°C. Avoid freeze / thaw cycles.  |



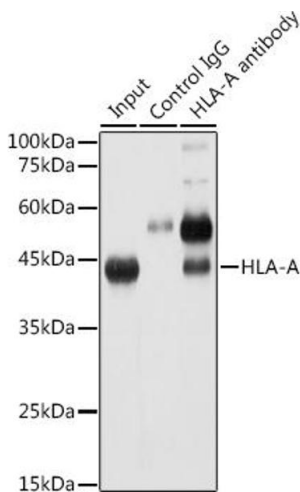
### Immunohistochemistry

**Image 1.** Immunohistochemistry of paraffin-embedded human esophageal using HLA-A Rabbit mAb (ABIN7268366) at dilution of 1:100 (40x lens). Perform microwave antigen retrieval with 10 mM PBS buffer pH 7.2 before commencing with IHC staining protocol.



### Western Blotting

**Image 2.** Western blot analysis of extracts of various cell lines, using HLA-A antibody (ABIN7268366) at 1:1000 dilution. Secondary antibody: HRP Goat Anti-Rabbit IgG (H+L) (ABIN1684268 and ABIN3020597) at 1:10000 dilution. Lysates/proteins: 25 µg per lane. Blocking buffer: 3 % nonfat dry milk in TBST. Detection: ECL Basic Kit (RM00020). Exposure time: 1s.



### Immunoprecipitation

**Image 3.** Immunoprecipitation analysis of 300 µg extracts of HeLa cells using 3 µg HLA-A antibody (ABIN7268366). Western blot was performed from the immunoprecipitate using HLA-A antibody (ABIN7268366) at a dilution of 1:2000.