

Datasheet for ABIN7268372
anti-HLA-DQA1 antibody



[Go to Product page](#)

4 Images

Overview

Quantity:	100 µL
Target:	HLA-DQA1
Reactivity:	Human
Host:	Rabbit
Clonality:	Monoclonal
Conjugate:	This HLA-DQA1 antibody is un-conjugated
Application:	Western Blotting (WB), Immunohistochemistry (IHC)

Product Details

Purpose:	HLA-DQA1 Rabbit mAb
Immunogen:	A synthesized peptide derived from human HLA-DQA1
Isotype:	IgG
Cross-Reactivity:	Human, Mouse, Rat
Characteristics:	Monoclonal Antibodies
Purification:	Affinity purification

Target Details

Target:	HLA-DQA1
Alternative Name:	HLA-DQA1 (HLA-DQA1 Products)
Background:	HLA-DQA1 belongs to the HLA class II alpha chain paralogues. The class II molecule is a

Target Details

heterodimer consisting of an alpha (DQA) and a beta chain (DQB), both anchored in the membrane. It plays a central role in the immune system by presenting peptides derived from extracellular proteins. Class II molecules are expressed in antigen presenting cells (APC: B Lymphocytes, dendritic cells, macrophages). The alpha chain is approximately 33-35 kDa. It is encoded by 5 exons, exon 1 encodes the leader peptide, exons 2 and 3 encode the two extracellular domains, and exon 4 encodes the transmembrane domain and the cytoplasmic tail. Within the DQ molecule both the alpha chain and the beta chain contain the polymorphisms specifying the peptide binding specificities, resulting in up to four different molecules. Typing for these polymorphisms is routinely done for bone marrow transplantation. [provided by RefSeq, Jul 2008],CELIAC1, DQ-A1, HLA-DQA,HLA-DQA1

Molecular Weight: 28kDa

Gene ID: 3117

UniProt: [P01909](#)

Pathways: [TCR Signaling](#), [Cancer Immune Checkpoints](#), [Human Leukocyte Antigen \(HLA\) in Adaptive Immune Response](#)

Application Details

Application Notes: WB,1:500 - 1:2000,IHC,1:50 - 1:200

Restrictions: For Research Use only

Handling

Format: Liquid

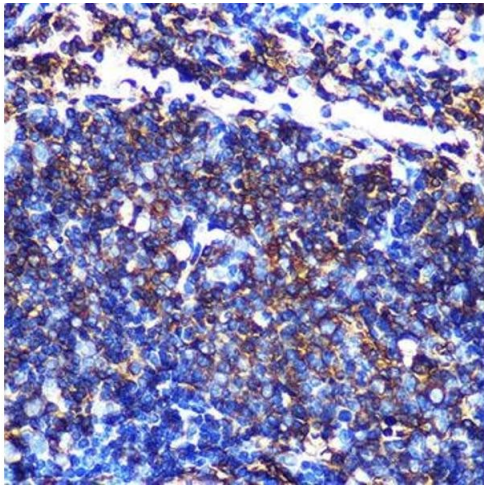
Buffer: PBS with 0.02 % sodium azide,0.05 % BSA,50 % glycerol, pH 7.3.

Preservative: Sodium azide

Precaution of Use: This product contains Sodium azide: a POISONOUS AND HAZARDOUS SUBSTANCE which should be handled by trained staff only.

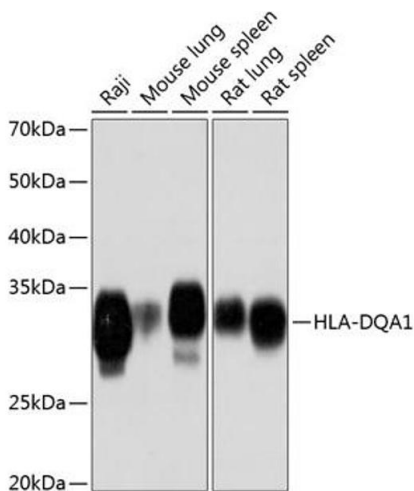
Storage: -20 °C

Storage Comment: Store at -20°C. Avoid freeze / thaw cycles.



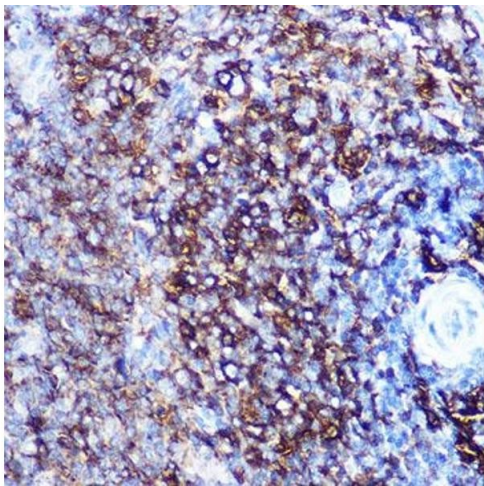
Immunohistochemistry

Image 1. Immunohistochemistry of paraffin-embedded mouse spleen using HLA-DQ Rabbit mAb (1252) at dilution of 1:100 (40x lens). Perform microwave antigen retrieval with 10 mM PBS buffer pH 7.2 before commencing with IHC staining protocol.



Western Blotting

Image 2. Western blot analysis of extracts of various cell lines, using HLA-DQ Rabbit mAb (1252) at 1:1000 dilution. Secondary antibody: HRP Goat Anti-Rabbit IgG (H+L) (ABIN1684268 and ABIN3020597) at 1:10000 dilution. Lysates/proteins: 25 µg per lane. Blocking buffer: 3 % nonfat dry milk in TBST. Detection: ECL Basic Kit (RM00020). Exposure time: 10s.



Immunohistochemistry

Image 3. Immunohistochemistry of paraffin-embedded rat spleen using HLA-DQ Rabbit mAb (1252) at dilution of 1:100 (40x lens). Perform microwave antigen retrieval with 10 mM PBS buffer pH 7.2 before commencing with IHC staining protocol.

Please check the [product details page](#) for more images. Overall 4 images are available for ABIN7268372.