

Datasheet for ABIN7268375  
**anti-HLA-DRB4 antibody**[Go to Product page](#)

## 1 Image

## Overview

Quantity:	100 µL
Target:	HLA-DRB4
Reactivity:	Human
Host:	Rabbit
Clonality:	Monoclonal
Conjugate:	This HLA-DRB4 antibody is un-conjugated
Application:	Western Blotting (WB)

## Product Details

Purpose:	HLA-DRB4 Rabbit mAb
Immunogen:	A synthesized peptide derived from human HLA-DRB4.
Isotype:	IgG
Cross-Reactivity:	Human
Characteristics:	Monoclonal Antibodies
Purification:	Affinity purification

## Target Details

Target:	HLA-DRB4
Alternative Name:	HLA-DRB4 ( <a href="#">HLA-DRB4 Products</a> )
Background:	Calreticulin is a multifunctional protein that acts as a major Ca(2+)-binding (storage) protein in

## Target Details

the lumen of the endoplasmic reticulum. It is also found in the nucleus, suggesting that it may have a role in transcription regulation. Calreticulin binds to the synthetic peptide KLGFFKR, which is almost identical to an amino acid sequence in the DNA-binding domain of the superfamily of nuclear receptors. Calreticulin binds to antibodies in certain sera of systemic lupus and Sjogren patients which contain anti-Ro/SSA antibodies, it is highly conserved among species, and it is located in the endoplasmic and sarcoplasmic reticulum where it may bind calcium. The amino terminus of calreticulin interacts with the DNA-binding domain of the glucocorticoid receptor and prevents the receptor from binding to its specific glucocorticoid response element. Calreticulin can inhibit the binding of androgen receptor to its hormone-responsive DNA element and can inhibit androgen receptor and retinoic acid receptor transcriptional activities in vivo, as well as retinoic acid-induced neuronal differentiation. Thus, calreticulin can act as an important modulator of the regulation of gene transcription by nuclear hormone receptors.,HLA-DRB4, DR4, DRB4, HLA-DR4B, major histocompatibility complex, class II, DR beta 4,Immunology & Inflammation,HLA-DRB4

Molecular Weight:	30kDa
Gene ID:	3126
UniProt:	<a href="#">P13762</a>
Pathways:	<a href="#">TCR Signaling</a> , <a href="#">Positive Regulation of Peptide Hormone Secretion</a> , <a href="#">Production of Molecular Mediator of Immune Response</a>

## Application Details

Application Notes:	WB,1:500 - 1:2000
Restrictions:	For Research Use only

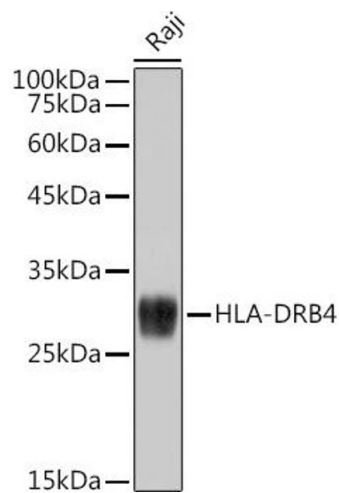
## Handling

Format:	Liquid
Buffer:	PBS with 0.02 % sodium azide,0.05 % BSA,50 % glycerol, pH 7.3.
Preservative:	Sodium azide
Precaution of Use:	This product contains Sodium azide: a POISONOUS AND HAZARDOUS SUBSTANCE which should be handled by trained staff only.
Storage:	-20 °C

Handling

Storage Comment: Store at -20°C. Avoid freeze / thaw cycles.

Images



Western Blotting

**Image 1.** Western blot analysis of extracts of Raji cells, using HLA-DRB4 antibody (ABIN7268375) at 1:1000 dilution. Secondary antibody: HRP Goat Anti-Rabbit IgG (H+L) (ABIN1684268 and ABIN3020597) at 1:10000 dilution. Lysates/proteins: 25 µg per lane. Blocking buffer: 3 % nonfat dry milk in TBST. Detection: ECL Basic Kit (RM00020). Exposure time: 1 s.