

Datasheet for ABIN7268379

anti-MDH1 antibody**1** Image[Go to Product page](#)

Overview

Quantity:	100 µL
Target:	MDH1
Reactivity:	Human
Host:	Rabbit
Clonality:	Monoclonal
Conjugate:	This MDH1 antibody is un-conjugated
Application:	Western Blotting (WB)

Product Details

Purpose:	MDH1 Rabbit mAb
Immunogen:	A synthesized peptide derived from human MDH1
Isotype:	IgG
Cross-Reactivity:	Human, Mouse, Rat
Characteristics:	Monoclonal Antibodies
Purification:	Affinity purification

Target Details

Target:	MDH1
Alternative Name:	MDH1 (MDH1 Products)
Background:	This gene encodes an enzyme that catalyzes the NAD/NADH-dependent, reversible oxidation of

Target Details

malate to oxaloacetate in many metabolic pathways, including the citric acid cycle. Two main isozymes are known to exist in eukaryotic cells: one is found in the mitochondrial matrix and the other in the cytoplasm. This gene encodes the cytosolic isozyme, which plays a key role in the malate-aspartate shuttle that allows malate to pass through the mitochondrial membrane to be transformed into oxaloacetate for further cellular processes. Alternatively spliced transcript variants have been found for this gene. A recent study showed that a C-terminally extended isoform is produced by use of an alternative in-frame translation termination codon via a stop codon readthrough mechanism, and that this isoform is localized in the peroxisomes. Pseudogenes have been identified on chromosomes X and 6. [provided by RefSeq, Feb 2016],HEL-S-32, MDH-s, MDHA, MGC:1375, MOR2,Cancer,Carbohydrate metabolism,Endocrine & Metabolism,Signal Transduction,MDH1

Molecular Weight: 36kDa

Gene ID: 4190

UniProt: [P40925](#)

Application Details

Application Notes: WB,1:500 - 1:2000

Restrictions: For Research Use only

Handling

Format: Liquid

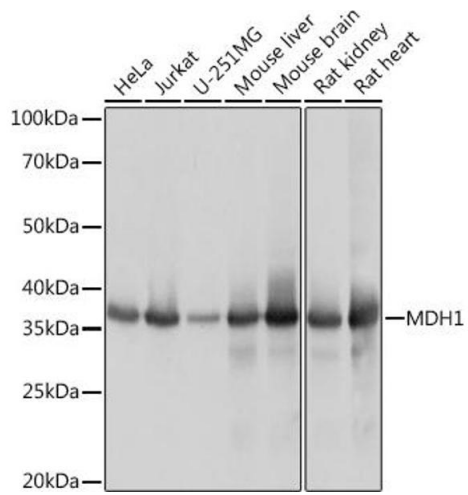
Buffer: PBS with 0.02 % sodium azide,0.05 % BSA,50 % glycerol, pH 7.3.

Preservative: Sodium azide

Precaution of Use: This product contains Sodium azide: a POISONOUS AND HAZARDOUS SUBSTANCE which should be handled by trained staff only.

Storage: -20 °C

Storage Comment: Store at -20°C. Avoid freeze / thaw cycles.



Western Blotting

Image 1. Western blot analysis of extracts of various cell lines, using MDH1 Rabbit mAb (ABIN7268379) at 1:1000 dilution. Secondary antibody: HRP Goat Anti-Rabbit IgG (H+L) (ABIN1684268 and ABIN3020597) at 1:10000 dilution. Lysates/proteins: 25 µg per lane. Blocking buffer: 3% nonfat dry milk in TBST. Detection: ECL Basic Kit (RM00020). Exposure time: 1s.