



[Go to Product page](#)

Datasheet for ABIN7268400
anti-MBIP antibody (AA 1-344)

1 Image

Overview

Quantity:	100 µL
Target:	MBIP
Binding Specificity:	AA 1-344
Reactivity:	Human
Host:	Rabbit
Clonality:	Polyclonal
Conjugate:	This MBIP antibody is un-conjugated
Application:	Western Blotting (WB)

Product Details

Purpose:	MBIP Rabbit pAb
Immunogen:	Recombinant fusion protein containing a sequence corresponding to amino acids 1-344 of human MBIP (NP_057670.2).
Sequence:	MAAATELNRP SSGDRNLERR CRPNLSREVL YEIFRSLHTL VGQLDLRDDV VKITIDWNKL QLSAFQPAL LFSALEQHIL YLQPFLAKLQ SPIKEENTTA VEEIGRTEMG NKNEVNDKFS IGDLQEEEEKH KESDLRDVKK TQIHFDPEVV QIKAGKAEID RRISAFIERK QAEINENNVR EFCNVIDCNQ ENSCARTDAI FTPYPGFKSH VKVSRVVNTY GPQTRPEGIP GSGHKPNSML RDCGNQAVEE RLQNEAHLR LQTGGPVPRD IYQRIKKLED KILELEGISP EYFQSVSFSG KRRKVQPPQQ NYSLAELDEK ISALKQALLR KSREAESMAT HHL P
Isotype:	IgG
Cross-Reactivity:	Rat

Product Details

Characteristics: Polyclonal Antibodies

Purification: Affinity purification

Target Details

Target: MBIP

Alternative Name: MBIP ([MBIP Products](#))

Background: Inhibits the MAP3K12 activity to induce the activation of the JNK/SAPK pathway. Component of the ATAC complex, a complex with histone acetyltransferase activity on histones H3 and H4.,MBIP,Signal Transduction,Kinase,MBIP

Molecular Weight: 32kDa/34kDa/39kDa

Gene ID: 51562

UniProt: [Q9NS73](#)

Application Details

Application Notes: WB,1:500 - 1:2000

Restrictions: For Research Use only

Handling

Format: Liquid

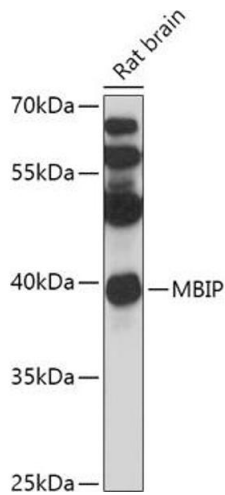
Buffer: PBS with 0.02 % sodium azide,50 % glycerol, pH 7.3.

Preservative: Sodium azide

Precaution of Use: This product contains Sodium azide: a POISONOUS AND HAZARDOUS SUBSTANCE which should be handled by trained staff only.

Storage: -20 °C

Storage Comment: Store at -20°C. Avoid freeze / thaw cycles.



Western Blotting

Image 1. Western blot analysis of extracts of Rat brain, using MBIP antibody (ABIN7268400) at 1:1000 dilution. Secondary antibody: HRP Goat Anti-Rabbit IgG (H+L) (ABIN1684268 and ABIN3020597) at 1:10000 dilution. Lysates/proteins: 25 µg per lane. Blocking buffer: 3 % nonfat dry milk in TBST. Detection: ECL Basic Kit (RM00020). Exposure time: 15s.