

Datasheet for ABIN7268410
anti-MAML2 antibody (AA 750-850)[Go to Product page](#)

2 Images

Overview

Quantity:	100 µL
Target:	MAML2
Binding Specificity:	AA 750-850
Reactivity:	Human
Host:	Rabbit
Clonality:	Polyclonal
Conjugate:	This MAML2 antibody is un-conjugated
Application:	Western Blotting (WB), Immunofluorescence (IF)

Product Details

Purpose:	MAML2 Rabbit pAb
Immunogen:	A synthetic peptide corresponding to a sequence within amino acids 750-850 of human MAML2 (NP_115803.1).
Sequence:	NQQLMGKKQT LQRQIMEQKQ QLLLQQQMLA DAEKIAPQDQ INRHLSRPPP DYKDQRRNVG NMQPTAQYSG GSSTISLNSN QALANPVSTH TILTPNSSLL S
Isotype:	IgG
Cross-Reactivity:	Human, Mouse, Rat
Characteristics:	Polyclonal Antibodies
Purification:	Affinity purification

Target Details

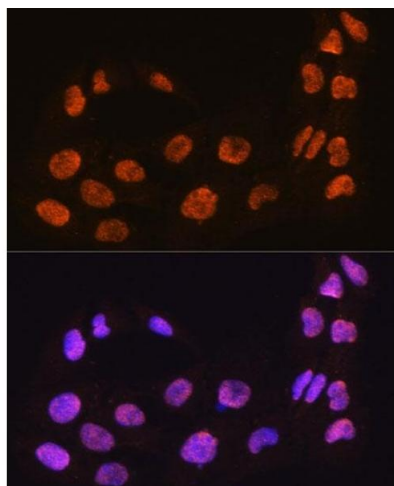
Target:	MAML2
Alternative Name:	MAML2 (MAML2 Products)
Background:	<p>The protein encoded by this gene is a member of the Mastermind-like family of proteins. All family members are proline and glutamine-rich, and contain a conserved basic domain that binds the ankyrin repeat domain of the intracellular domain of the Notch receptors (ICN1-4) in their N-terminus, and a transcriptional activation domain in their C-terminus. This protein binds to an extended groove that is formed by the interaction of CBF1, Suppressor of Hairless, LAG-1 (CSL) with ICN, and positively regulates Notch signaling. High levels of expression of this gene have been observed in several B cell-derived lymphomas. Translocations resulting in fusion proteins with both CRTC1 and CRTC3 have been implicated in the development of mucoepidermoid carcinomas, while a translocation event with CXCR4 has been linked with chronic lymphocytic leukemia (CLL). Copy number variation in the polyglutamine tract has been observed.,MAML2,MAM-3,MAM2,MAM3,MLL-MAML2,Epigenetics & Nuclear Signaling,Signal Transduction,Cell Biology & Developmental Biology,Notch Signaling Pathway,Stem Cells,MAML2</p>
Gene ID:	84441
UniProt:	Q8IZL2

Application Details

Application Notes:	WB,1:500 - 1:2000,IF,1:50 - 1:200
Restrictions:	For Research Use only

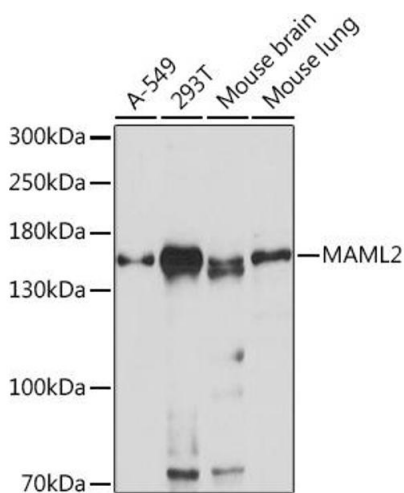
Handling

Format:	Liquid
Buffer:	PBS with 0.02 % sodium azide,50 % glycerol, pH 7.3.
Preservative:	Sodium azide
Precaution of Use:	This product contains Sodium azide: a POISONOUS AND HAZARDOUS SUBSTANCE which should be handled by trained staff only.
Storage:	-20 °C
Storage Comment:	Store at -20°C. Avoid freeze / thaw cycles.



Immunofluorescence

Image 1. Immunofluorescence analysis of C6 cells using M antibody (ABIN7268410) at dilution of 1:100. Blue: DAPI for nuclear staining.



Western Blotting

Image 2. Western blot analysis of extracts of various cell lines, using M Rabbit pAb (ABIN7268410) at 1:1000 dilution. Secondary antibody: HRP Goat Anti-Rabbit IgG (H+L) (ABIN1684268 and ABIN3020597) at 1:10000 dilution. Lysates/proteins: 25 µg per lane. Blocking buffer: 3 % nonfat dry milk in TBST. Detection: ECL Basic Kit (RM00020). Exposure time: 30s.