

Datasheet for ABIN7268411

anti-MELK antibody[Go to Product page](#)**1** Image

Overview

Quantity:	100 µL
Target:	MELK
Reactivity:	Human
Host:	Rabbit
Clonality:	Monoclonal
Conjugate:	This MELK antibody is un-conjugated
Application:	Western Blotting (WB)

Product Details

Purpose:	MELK Rabbit mAb
Immunogen:	A synthesized peptide derived from human MELK
Isotype:	IgG
Cross-Reactivity:	Human, Mouse, Rat
Characteristics:	Monoclonal Antibodies
Purification:	Affinity purification

Target Details

Target:	MELK
Alternative Name:	MELK (MELK Products)
Background:	Serine/threonine-protein kinase involved in various processes such as cell cycle regulation, self-

Target Details

renewal of stem cells, apoptosis and splicing regulation. Has a broad substrate specificity, phosphorylates BCL2L14, CDC25B, MAP3K5/ASK1 and ZNF622. Acts as an activator of apoptosis by phosphorylating and activating MAP3K5/ASK1. Acts as a regulator of cell cycle, notably by mediating phosphorylation of CDC25B, promoting localization of CDC25B to the centrosome and the spindle poles during mitosis. Plays a key role in cell proliferation and carcinogenesis. Required for proliferation of embryonic and postnatal multipotent neural progenitors. Phosphorylates and inhibits BCL2L14, possibly leading to affect mammary carcinogenesis by mediating inhibition of the pro-apoptotic function of BCL2L14. Also involved in the inhibition of spliceosome assembly during mitosis by phosphorylating ZNF622, thereby contributing to its redirection to the nucleus. May also play a role in primitive hematopoiesis.,HPK38,Cell Biology & Developmental Biology,Cell Cycle,Embryonic Stem Cells,Kinase,Signal Transduction,Stem Cells,MELK

Molecular Weight: 75kDa

Gene ID: 9833

UniProt: [Q14680](#)

Application Details

Application Notes: WB,1:500 - 1:2000

Restrictions: For Research Use only

Handling

Format: Liquid

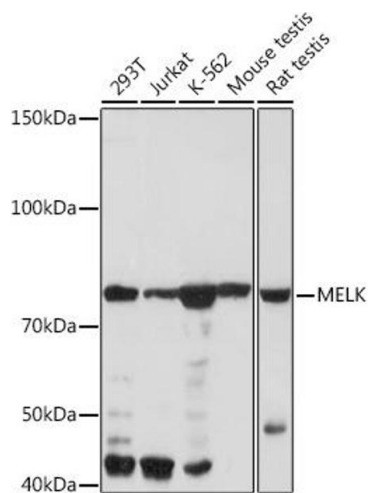
Buffer: PBS with 0.02 % sodium azide,0.05 % BSA,50 % glycerol, pH 7.3.

Preservative: Sodium azide

Precaution of Use: This product contains Sodium azide: a POISONOUS AND HAZARDOUS SUBSTANCE which should be handled by trained staff only.

Storage: -20 °C

Storage Comment: Store at -20°C. Avoid freeze / thaw cycles.



Western Blotting

Image 1. Western blot analysis of extracts of various cell lines, using MELK Rabbit mAb (ABIN7268411) at 1:1000 dilution. Secondary antibody: HRP Goat Anti-Rabbit IgG (H+L) (ABIN1684268 and ABIN3020597) at 1:10000 dilution. Lysates/proteins: 25 µg per lane. Blocking buffer: 3 % nonfat dry milk in TBST. Detection: ECL Basic Kit (RM00020). Exposure time: 1 min.