

Datasheet for ABIN7268416

anti-MMP11 antibody[Go to Product page](#)**1** Image

Overview

Quantity:	100 µL
Target:	MMP11
Reactivity:	Human
Host:	Rabbit
Clonality:	Monoclonal
Conjugate:	This MMP11 antibody is un-conjugated
Application:	Western Blotting (WB)

Product Details

Purpose:	MMP11 Rabbit mAb
Immunogen:	A synthesized peptide derived from human MMP11
Isotype:	IgG
Cross-Reactivity:	Human, Mouse, Rat
Characteristics:	Monoclonal Antibodies
Purification:	Affinity purification

Target Details

Target:	MMP11
Alternative Name:	MMP11 (MMP11 Products)
Background:	Proteins of the matrix metalloproteinase (MMP) family are involved in the breakdown of

Target Details

extracellular matrix in normal physiological processes, such as embryonic development, reproduction, and tissue remodeling, as well as in disease processes, such as arthritis and metastasis. Most MMP's are secreted as inactive proproteins which are activated when cleaved by extracellular proteinases. However, the enzyme encoded by this gene is activated intracellularly by furin within the constitutive secretory pathway. Also in contrast to other MMP's, this enzyme cleaves alpha 1-proteinase inhibitor but weakly degrades structural proteins of the extracellular matrix. [provided by RefSeq, Jul 2008],SL-3, ST3, STMY3,Angiogenesis,Cancer,Cardiovascular,Cell Biology & Developmental Biology,Cytoskeleton,Extracellular Matrix,Extracellular Matrix_MMPs,Invasion and Metastasis,Signal Transduction,Ubiquitin,MMP11

Molecular Weight: 55kDa

Gene ID: 4320

UniProt: [P24347](#)

Application Details

Application Notes: WB,1:500 - 1:2000

Restrictions: For Research Use only

Handling

Format: Liquid

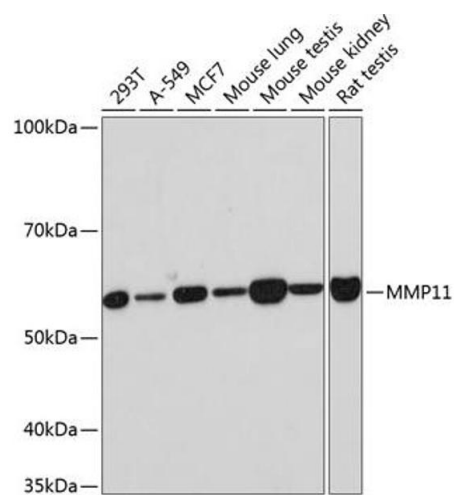
Buffer: PBS with 0.02 % sodium azide,0.05 % BSA,50 % glycerol, pH 7.3.

Preservative: Sodium azide

Precaution of Use: This product contains Sodium azide: a POISONOUS AND HAZARDOUS SUBSTANCE which should be handled by trained staff only.

Storage: -20 °C

Storage Comment: Store at -20°C. Avoid freeze / thaw cycles.



Western Blotting

Image 1. Western blot analysis of extracts of various cell lines, using MMP11 Rabbit mAb (ABIN7268416) at 1:1000 dilution. Secondary antibody: HRP Goat Anti-Rabbit IgG (H+L) (ABIN1684268 and ABIN3020597) at 1:10000 dilution. Lysates/proteins: 25 µg per lane. Blocking buffer: 3 % nonfat dry milk in TBST. Detection: ECL Basic Kit (RM00020). Exposure time: 30s.