



[Go to Product page](#)

Datasheet for ABIN7268418  
**anti-MMP13 antibody (AA 262-471)**

3 Images

Overview

Quantity:	100 µL
Target:	MMP13
Binding Specificity:	AA 262-471
Reactivity:	Human
Host:	Rabbit
Clonality:	Polyclonal
Conjugate:	This MMP13 antibody is un-conjugated
Application:	Western Blotting (WB), Immunofluorescence (IF)

Product Details

Purpose:	[KO Validated] MMP13 Rabbit pAb
Immunogen:	Recombinant fusion protein containing a sequence corresponding to amino acids 262-471 of human MMP13 (NP_002418.1).
Sequence:	IQSLYGPGE DPNPKHPKTP DKCDPSLSLD AITSLRGETM IFKDRFFWRL HPQQVDAELF LTKSFWPELP NRIDAAYEHP SHDLIFIFRG RKF WALNGYD ILEGYPKKIS ELGLPKEVKK ISAAVHFEDT GKTLLFSGNQ VWRYDDTNHI MDKDYPR LIE EDFPGIGDKV DAVYEKNGYI YFFNGPIQFE YSIWSNRIVR VMPANSILWC
Isotype:	IgG
Cross-Reactivity:	Human, Mouse, Rat
Characteristics:	Polyclonal Antibodies

## Product Details

---

Purification: Affinity purification

---

Grade: KO Validated

---

## Target Details

---

Target: MMP13

---

Alternative Name: MMP13 ([MMP13 Products](#))

---

Background: This gene encodes a member of the peptidase M10 family of matrix metalloproteinases (MMPs). Proteins in this family are involved in the breakdown of extracellular matrix in normal physiological processes, such as embryonic development, reproduction, and tissue remodeling, as well as in disease processes, such as arthritis and metastasis. The encoded preproprotein is proteolytically processed to generate the mature protease. This protease cleaves type II collagen more efficiently than types I and III. It may be involved in articular cartilage turnover and cartilage pathophysiology associated with osteoarthritis. Mutations in this gene are associated with metaphyseal anadysplasia. This gene is part of a cluster of MMP genes on chromosome 11.,MMP13,CLG3,MANDP1,MDST,MMP-13,Cancer,Tumor biomarkers,Invasion and Metastasis,Signal Transduction,G protein signaling,G2/M DNA Damage Checkpoint,Cell Biology & Developmental Biology,Cytoskeleton,Extracellular Matrix,MMPs,Ubiquitin,Cardiovascular,Angiogenesis,MMP13

---

Molecular Weight: 53kDa

---

Gene ID: 4322

---

UniProt: [P45452](#)

---

## Application Details

---

Application Notes: WB,1:500 - 1:2000,IF,1:50 - 1:200

---

Restrictions: For Research Use only

---

## Handling

---

Format: Liquid

---

Buffer: PBS with 0.02 % sodium azide,50 % glycerol, pH 7.3.

---

Preservative: Sodium azide

---

Precaution of Use: This product contains Sodium azide: a POISONOUS AND HAZARDOUS SUBSTANCE which

---

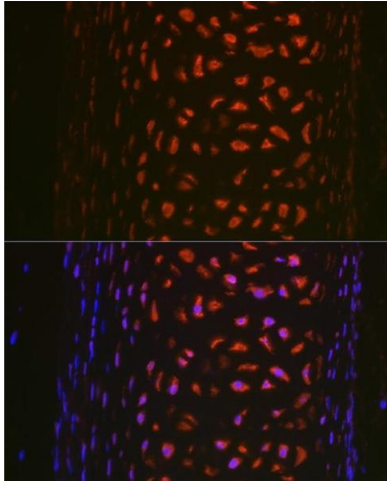
## Handling

should be handled by trained staff only.

Storage: -20 °C

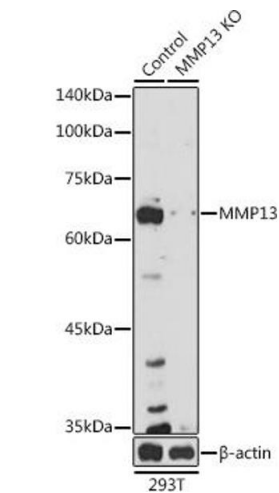
Storage Comment: Store at -20°C. Avoid freeze / thaw cycles.

## Images



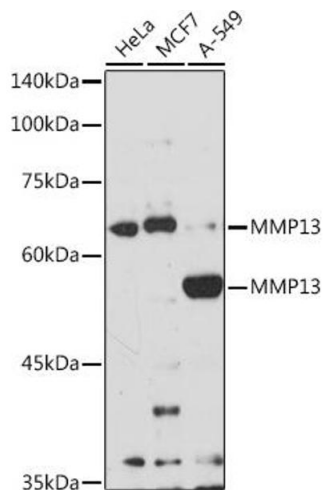
### Immunofluorescence

**Image 1.** Immunofluorescence analysis of rat trachea using MMP13 Rabbit pAb (ABIN7268418) at dilution of 1:100 (40x lens). Blue: DAPI for nuclear staining.



### Western Blotting

**Image 2.** Western blot analysis of extracts from normal (control) and MMP13 knockout (KO) 293T cells, using MMP13 antibody (ABIN7268418) at 1:1000 dilution. Secondary antibody: HRP Goat Anti-Rabbit IgG (H+L) (ABIN1684268 and ABIN3020597) at 1:10000 dilution. Lysates/proteins: 25 µg per lane. Blocking buffer: 3 % nonfat dry milk in TBST. Detection: ECL Basic Kit (RM00020). Exposure time: 180s.



### Western Blotting

**Image 3.** Western blot analysis of extracts of various cell lines, using MMP13 antibody (ABIN7268418) at 1:1000 dilution. Secondary antibody: HRP Goat Anti-Rabbit IgG (H+L) (ABIN1684268 and ABIN3020597) at 1:10000 dilution. Lysates/proteins: 25 µg per lane. Blocking buffer: 3 % nonfat dry milk in TBST. Detection: ECL Basic Kit (RM00020). Exposure time: 180s.