

Datasheet for ABIN7268419

anti-MMP13 antibody**3** Images[Go to Product page](#)

Overview

Quantity:	100 µL
Target:	MMP13
Reactivity:	Human
Host:	Rabbit
Clonality:	Monoclonal
Conjugate:	This MMP13 antibody is un-conjugated
Application:	Western Blotting (WB), Immunohistochemistry (IHC), Immunofluorescence (IF)

Product Details

Purpose:	MMP13 Rabbit mAb
Immunogen:	A synthesized peptide derived from human MMP13
Isotype:	IgG
Cross-Reactivity:	Human
Characteristics:	Monoclonal Antibodies
Purification:	Affinity purification

Target Details

Target:	MMP13
Alternative Name:	MMP13 (MMP13 Products)
Background:	This gene encodes a member of the peptidase M10 family of matrix metalloproteinases

Target Details

(MMPs). Proteins in this family are involved in the breakdown of extracellular matrix in normal physiological processes, such as embryonic development, reproduction, and tissue remodeling, as well as in disease processes, such as arthritis and metastasis. The encoded preproprotein is proteolytically processed to generate the mature protease. This protease cleaves type II collagen more efficiently than types I and III. It may be involved in articular cartilage turnover and cartilage pathophysiology associated with osteoarthritis. Mutations in this gene are associated with metaphyseal anadysplasia. This gene is part of a cluster of MMP genes on chromosome 11. [provided by RefSeq, Jan 2016],CLG3, MANDP1, MDST, MMP-13,Angiogenesis,Cancer,Cardiovascular,Cell Biology & Developmental Biology,Cytoskeleton,Extracellular Matrix,Extracellular Matrix_MMPs,G protein signaling,G protein signaling_G-Protein-Coupled Receptors Signaling to MAPK/Erk,Invasion and Metastasis,Signal Transduction,Tumor biomarkers,Ubiquitin,MMP13

Molecular Weight:	54kDa
-------------------	-------

Gene ID:	4322
----------	------

UniProt:	P45452
----------	------------------------

Application Details

Application Notes:	WB,1:500 - 1:2000,IHC,1:50 - 1:200,IF,1:50 - 1:200
--------------------	--

Restrictions:	For Research Use only
---------------	-----------------------

Handling

Format:	Liquid
---------	--------

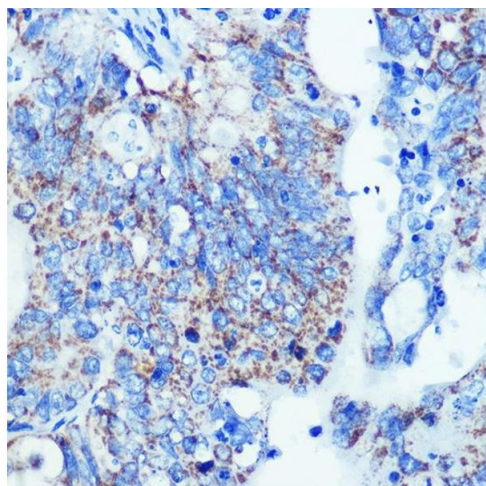
Buffer:	PBS with 0.02 % sodium azide,0.05 % BSA,50 % glycerol, pH 7.3.
---------	--

Preservative:	Sodium azide
---------------	--------------

Precaution of Use:	This product contains Sodium azide: a POISONOUS AND HAZARDOUS SUBSTANCE which should be handled by trained staff only.
--------------------	--

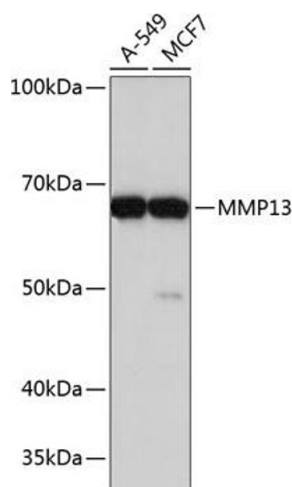
Storage:	-20 °C
----------	--------

Storage Comment:	Store at -20°C. Avoid freeze / thaw cycles.
------------------	---



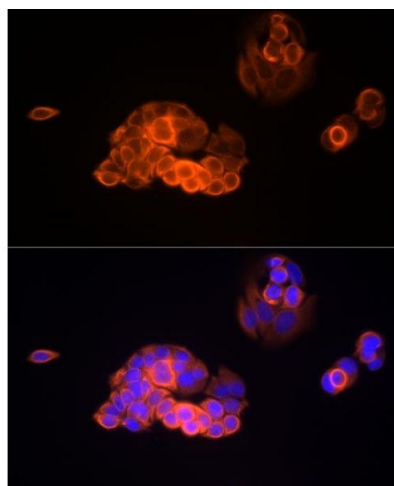
Immunohistochemistry

Image 1. Immunohistochemistry of paraffin-embedded human colon carcinoma using MMP13 Rabbit mAb (ABIN7268419) at dilution of 1:100 (40x lens). Perform microwave antigen retrieval with 10 mM PBS buffer pH 7.2 before commencing with IHC staining protocol.



Western Blotting

Image 2. Western blot analysis of extracts of various cell lines, using MMP13 Rabbit mAb (ABIN7268419) at 1:1000 dilution. Secondary antibody: HRP Goat Anti-Rabbit IgG (H+L) (ABIN1684268 and ABIN3020597) at 1:10000 dilution. Lysates/proteins: 25 µg per lane. Blocking buffer: 3 % nonfat dry milk in TBST. Detection: ECL Basic Kit (RM00020). Exposure time: 90s.



Immunofluorescence

Image 3. Immunofluorescence analysis of MCF7 cells using MMP13 Rabbit mAb (ABIN7268419) at dilution of 1:100 (40x lens). Blue: DAPI for nuclear staining.