



[Go to Product page](#)

Datasheet for ABIN7268420

anti-MMP14 antibody

2 Images

Overview

Quantity:	100 µL
Target:	MMP14
Reactivity:	Human
Host:	Rabbit
Clonality:	Monoclonal
Conjugate:	This MMP14 antibody is un-conjugated
Application:	Western Blotting (WB)

Product Details

Purpose:	MMP14/MT1-MMP Rabbit mAb
Immunogen:	A synthesized peptide derived from human MMP14/MMP14/MT1-MMP
Isotype:	IgG
Cross-Reactivity:	Human, Mouse, Rat
Characteristics:	Monoclonal Antibodies
Purification:	Affinity purification

Target Details

Target:	MMP14
Alternative Name:	MMP14 (MMP14 Products)
Background:	Proteins of the matrix metalloproteinase (MMP) family are involved in the breakdown of

Target Details

extracellular matrix in normal physiological processes, such as embryonic development, reproduction, and tissue remodeling, as well as in disease processes, such as arthritis and metastasis. Most MMP's are secreted as inactive proproteins which are activated when cleaved by extracellular proteinases. However, the protein encoded by this gene is a member of the membrane-type MMP (MT-MMP) subfamily; each member of this subfamily contains a potential transmembrane domain suggesting that these proteins are expressed at the cell surface rather than secreted. This protein activates MMP2 protein, and this activity may be involved in tumor invasion. [provided by RefSeq, Jul 2008],MMP-14, MMP-X1, MT-MMP, MT-MMP 1, MT1-MMP, MT1MMP, MTMMP1, WNCHRS,Angiogenesis,Cancer,Cardiovascular,Cell Biology & Developmental Biology,Cytoskeleton,Endocrine & Metabolism,Extracellular Matrix,Extracellular Matrix_MMPs,Hypoxia,Invasion and Metastasis,Signal Transduction,Tumor biomarkers,Ubiquitin,MMP14

Molecular Weight: 65kDa

Gene ID: 4323

UniProt: [P50281](#)

Pathways: [Autophagy](#)

Application Details

Application Notes: WB,1:500 - 1:2000

Restrictions: For Research Use only

Handling

Format: Liquid

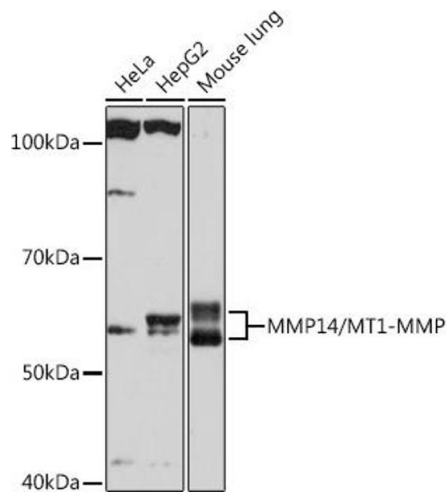
Buffer: PBS with 0.02 % sodium azide,0.05 % BSA,50 % glycerol, pH 7.3.

Preservative: Sodium azide

Precaution of Use: This product contains Sodium azide: a POISONOUS AND HAZARDOUS SUBSTANCE which should be handled by trained staff only.

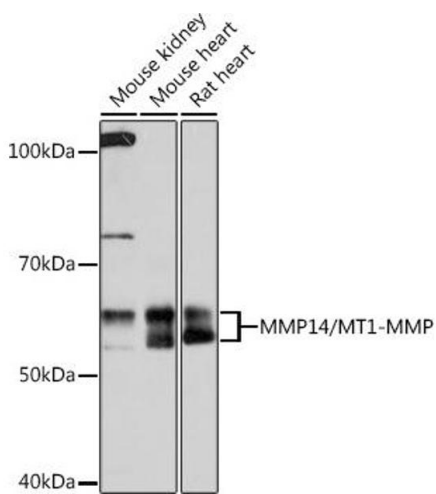
Storage: -20 °C

Storage Comment: Store at -20°C. Avoid freeze / thaw cycles.



Western Blotting

Image 1. Western blot analysis of extracts of various cell lines, using MMP14/MMP14/MT1-MMP Rabbit mAb (ABIN7268420) at 1:1000 dilution. Secondary antibody: HRP Goat Anti-Rabbit IgG (H+L) (ABIN1684268 and ABIN3020597) at 1:10000 dilution. Lysates/proteins: 25 µg per lane. Blocking buffer: 3% nonfat dry milk in TBST. Detection: ECL Basic Kit (RM00020). Exposure time: 10s.



Western Blotting

Image 2. Western blot analysis of extracts of various cell lines, using MMP14/MMP14/MT1-MMP Rabbit mAb (ABIN7268420) at 1:1000 dilution. Secondary antibody: HRP Goat Anti-Rabbit IgG (H+L) (ABIN1684268 and ABIN3020597) at 1:10000 dilution. Lysates/proteins: 25 µg per lane. Blocking buffer: 3% nonfat dry milk in TBST. Detection: ECL Basic Kit (RM00020). Exposure time: 90s.