

Datasheet for ABIN7268422
anti-MMP25 antibody (AA 350-540)

6 Images

[Go to Product page](#)

Overview

Quantity:	100 µL
Target:	MMP25
Binding Specificity:	AA 350-540
Reactivity:	Human
Host:	Rabbit
Clonality:	Polyclonal
Conjugate:	This MMP25 antibody is un-conjugated
Application:	Western Blotting (WB), Immunohistochemistry (IHC), Immunofluorescence (IF)

Product Details

Purpose:	MMP25 Rabbit pAb
Immunogen:	Recombinant fusion protein containing a sequence corresponding to amino acids 350-540 of human MMP25 (NP_071913.1).
Sequence:	SPRPARLHRF WEGLPAQVRV VQAAYARHRD GRILLFSGPQ FWVFQDRQLE GGARPLTELG LPPGEEVDAV FSWPQNGKTY LVRGRQYWRY DEAAARPDPG YPRDLSLWEG APPSPDDVTV SNAGDTYFFK GAHYWRFPKN SIKTEPDAPQ PMGPNWLDGP APSSGPRAPR PPKATPVSET CDCQCELNQA A
Isotype:	IgG
Cross-Reactivity:	Human, Mouse, Rat
Characteristics:	Polyclonal Antibodies

Product Details

Purification: Affinity purification

Target Details

Target: MMP25

Alternative Name: MMP25 ([MMP25 Products](#))

Background: Proteins of the matrix metalloproteinase (MMP) family are involved in the breakdown of extracellular matrix in normal physiological processes, such as embryonic development, reproduction, and tissue remodeling, as well as in disease processes, such as arthritis and metastasis. Most MMPs are secreted as inactive proproteins which are activated when cleaved by extracellular proteinases. However, the protein encoded by this gene is a member of the membrane-type MMP (MT-MMP) subfamily, attached to the plasma membrane via a glycosylphosphatidyl inositol anchor. In response to bacterial infection or inflammation, the encoded protein is thought to inactivate alpha-1 proteinase inhibitor, a major tissue protectant against proteolytic enzymes released by activated neutrophils, facilitating the transendothelial migration of neutrophils to inflammatory sites. The encoded protein may also play a role in tumor invasion and metastasis through activation of MMP2. The gene has previously been referred to as MMP20 but has been renamed MMP25.,MMP25,MMP-25,MMP20,MMP20A,MMPL1,MT-MMP 6,MT-MMP6,MT6-MMP,MT6MMP,MTMMP6,Cancer,Invasion and Metastasis,Signal Transduction,Cell Biology & Developmental Biology,Cytoskeleton,Extracellular Matrix,MMPs,Ubiquitin,MMP25

Molecular Weight: 62kDa

Gene ID: 64386

UniProt: [Q9NPA2](#)

Application Details

Application Notes: WB,1:500 - 1:2000,IHC,1:50 - 1:200,IF,1:50 - 1:200

Restrictions: For Research Use only

Handling

Format: Liquid

Buffer: PBS with 0.02 % sodium azide,50 % glycerol, pH 7.3.

Preservative: Sodium azide

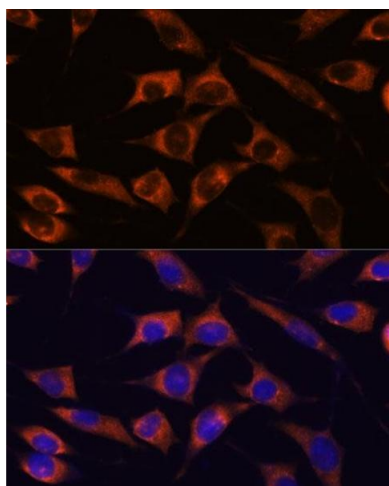
Handling

Precaution of Use: This product contains Sodium azide: a POISONOUS AND HAZARDOUS SUBSTANCE which should be handled by trained staff only.

Storage: -20 °C

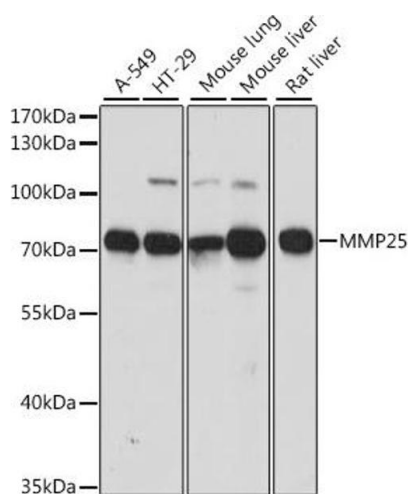
Storage Comment: Store at -20°C. Avoid freeze / thaw cycles.

Images



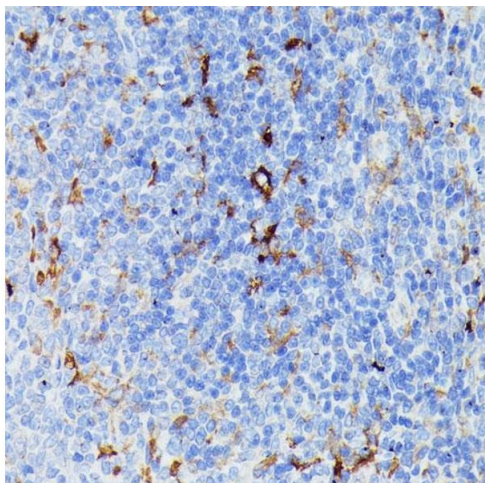
Immunofluorescence

Image 1. Immunofluorescence analysis of L929 cells using MMP25 antibody (ABIN7268422) at dilution of 1:100. Blue: DAPI for nuclear staining.



Western Blotting

Image 2. Western blot analysis of extracts of various cell lines, using MMP25 antibody (ABIN7268422) at 1:1000 dilution. Secondary antibody: HRP Goat Anti-Rabbit IgG (H+L) (ABIN1684268 and ABIN3020597) at 1:10000 dilution. Lysates/proteins: 25 µg per lane. Blocking buffer: 3 % nonfat dry milk in TBST. Detection: ECL Basic Kit (RM00020). Exposure time: 30s.



Immunohistochemistry

Image 3. Immunohistochemistry of paraffin-embedded rat spleen using MMP25 antibody (ABIN7268422) at dilution of 1:100 (40x lens). Perform microwave antigen retrieval with 10 mM PBS buffer pH 7.2 before commencing with IHC staining protocol.

Please check the [product details page](#) for more images. Overall 6 images are available for ABIN7268422.