



[Go to Product page](#)

Datasheet for ABIN7268423
anti-MMP26 antibody (AA 90-261)

1 Image

Overview

Quantity:	100 µL
Target:	MMP26
Binding Specificity:	AA 90-261
Reactivity:	Human
Host:	Rabbit
Clonality:	Polyclonal
Conjugate:	This MMP26 antibody is un-conjugated
Application:	Western Blotting (WB)

Product Details

Purpose:	MMP26 Rabbit pAb
Immunogen:	Recombinant fusion protein containing a sequence corresponding to amino acids 90-261 of human MMP26 (NP_068573.2).
Sequence:	TSISPGRCKW NKHTLTyrII NYPHDMKPSA VKDSIYNAVS IWSNVTLPIF QQVQNGDADI KVSWQWAHE DGWPFDPGG ILGHAFIPNS GNPVGVHFDK NEHWSASDTG YNLFLVATHE IGHSLGLQHS GNQSSIMYPT WYHDPRTFQ LSADDIQRIF HLYGEKCSSD IP
Isotype:	IgG
Cross-Reactivity:	Mouse
Characteristics:	Polyclonal Antibodies
Purification:	Affinity purification

Target Details

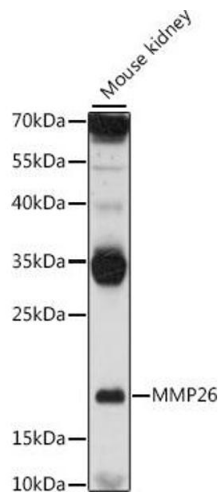
Target:	MMP26
Alternative Name:	MMP26 (MMP26 Products)
Background:	Proteins of the matrix metalloproteinase (MMP) family are involved in the breakdown of extracellular matrix in normal physiological processes, such as embryonic development, reproduction, and tissue remodeling, as well as in disease processes, such as arthritis and metastasis. The encoded preproprotein is proteolytically processed to generate the mature enzyme. This enzyme may degrade collagen type IV, fibronectin, fibrinogen, and beta-casein, and activate matrix metalloproteinase-9 by cleavage. The protein differs from most MMP family members in that it lacks a conserved C-terminal protein domain. The encoded protein may promote cell invasion in multiple human cancers.,MMP26,Cancer,Invasion and Metastasis,Signal Transduction,Cell Biology & Developmental Biology,Cytoskeleton,Extracellular Matrix,MMPS,Ubiquitin,MMP26
Molecular Weight:	29kDa
Gene ID:	56547
UniProt:	Q9NRE1

Application Details

Application Notes:	WB,1:500 - 1:2000
Restrictions:	For Research Use only

Handling

Format:	Liquid
Buffer:	PBS with 0.02 % sodium azide,50 % glycerol, pH 7.3.
Preservative:	Sodium azide
Precaution of Use:	This product contains Sodium azide: a POISONOUS AND HAZARDOUS SUBSTANCE which should be handled by trained staff only.
Storage:	-20 °C
Storage Comment:	Store at -20°C. Avoid freeze / thaw cycles.



Western Blotting

Image 1. Western blot analysis of extracts of mouse kidney, using MMP26 antibody (ABIN7268423) at 1:1000 dilution. Secondary antibody: HRP Goat Anti-Rabbit IgG (H+L) (ABIN1684268 and ABIN3020597) at 1:10000 dilution. Lysates/proteins: 25 µg per lane. Blocking buffer: 3 % nonfat dry milk in TBST. Detection: ECL Basic Kit (RM00020). Exposure time: 30s.