



[Go to Product page](#)

Datasheet for ABIN7268429

anti-MXD3 antibody

1 Image

Overview

Quantity:	100 µL
Target:	MXD3
Reactivity:	Human
Host:	Rabbit
Clonality:	Monoclonal
Conjugate:	This MXD3 antibody is un-conjugated
Application:	Western Blotting (WB)

Product Details

Purpose:	MAD3/MXD3 Rabbit mAb
Immunogen:	A synthesized peptide derived from human MAD3/MXD3
Isotype:	IgG
Cross-Reactivity:	Human, Mouse, Rat
Characteristics:	Monoclonal Antibodies
Purification:	Affinity purification

Target Details

Target:	MXD3
Alternative Name:	MXD3 (MXD3 Products)
Background:	This gene encodes a member of the Myc superfamily of basic helix-loop-helix leucine zipper

Target Details

transcriptional regulators. The encoded protein forms a heterodimer with the cofactor MAX which binds specific E-box DNA motifs in the promoters of target genes and regulates their transcription. Disruption of the MAX-MXD3 complex is associated with uncontrolled cell proliferation and tumorigenesis. Transcript variants of this gene encoding different isoforms have been described.[provided by RefSeq, Dec 2008],BHLHC13, MAD3, MYX,Cancer,Epigenetics & Nuclear Signaling,Transcription Factors,Tumor suppressors,MXD3

Molecular Weight: 28kDa

Gene ID: 83463

UniProt: [Q9BW11](#)

Application Details

Application Notes: WB,1:500 - 1:2000

Restrictions: For Research Use only

Handling

Format: Liquid

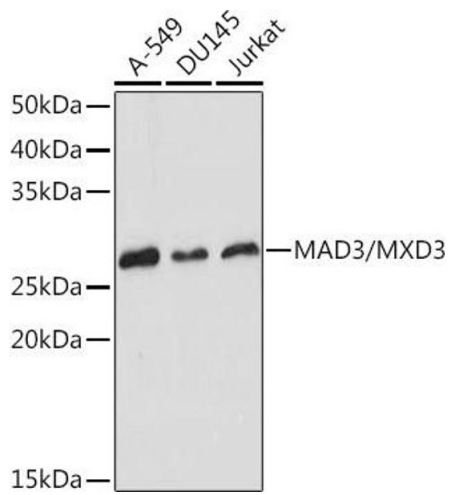
Buffer: PBS with 0.02 % sodium azide,0.05 % BSA,50 % glycerol, pH 7.3.

Preservative: Sodium azide

Precaution of Use: This product contains Sodium azide: a POISONOUS AND HAZARDOUS SUBSTANCE which should be handled by trained staff only.

Storage: -20 °C

Storage Comment: Store at -20°C. Avoid freeze / thaw cycles.



Western Blotting

Image 1. Western blot analysis of extracts of various cell lines, using M/MXD3 Rabbit mAb (ABIN7268429) at 1:1000 dilution. Secondary antibody: HRP Goat Anti-Rabbit IgG (H+L) (ABIN1684268 and ABIN3020597) at 1:10000 dilution. Lysates/proteins: 25 µg per lane. Blocking buffer: 3 % nonfat dry milk in TBST. Detection: ECL Basic Kit (RM00020). Exposure time: 1s.