

Datasheet for ABIN7268431  
**anti-MBP antibody**



[Go to Product page](#)

3 Images

## Overview

Quantity:	100 µL
Target:	MBP
Reactivity:	Human
Host:	Rabbit
Clonality:	Monoclonal
Conjugate:	This MBP antibody is un-conjugated
Application:	Western Blotting (WB), Immunofluorescence (IF)

## Product Details

Purpose:	Myelin Basic Protein Rabbit mAb
Immunogen:	A synthesized peptide derived from human Myelin Basic Protein
Isotype:	IgG
Cross-Reactivity:	Mouse, Rat
Characteristics:	Monoclonal Antibodies
Purification:	Affinity purification

## Target Details

Target:	MBP
Abstract:	<a href="#">MBP Products</a>
Background:	The protein encoded by the classic MBP gene is a major constituent of the myelin sheath of

## Target Details

---

oligodendrocytes and Schwann cells in the nervous system. However, MBP-related transcripts are also present in the bone marrow and the immune system. These mRNAs arise from the long MBP gene (otherwise called "Golli-MBP") that contains 3 additional exons located upstream of the classic MBP exons. Alternative splicing from the Golli and the MBP transcription start sites gives rise to 2 sets of MBP-related transcripts and gene products. The Golli mRNAs contain 3 exons unique to Golli-MBP, spliced in-frame to 1 or more MBP exons. They encode hybrid proteins that have N-terminal Golli aa sequence linked to MBP aa sequence. The second family of transcripts contain only MBP exons and produce the well characterized myelin basic proteins. This complex gene structure is conserved among species suggesting that the MBP transcription unit is an integral part of the Golli transcription unit and that this arrangement is important for the function and/or regulation of these genes. [provided by RefSeq, Jul 2008],MBP; myelin basic protein,Cell Adhesion,Cell Biology & Developmental Biology,Cell Type Marker,Cell Type Marker\_Oligodendrocyte marker,Neuroscience,Stem Cells,MBP

---

Molecular Weight: 18kDa

---

Gene ID: 4155

---

UniProt: [P02686](#)

## Application Details

---

Application Notes: WB,1:500 - 1:2000,IF,1:50 - 1:200

---

Restrictions: For Research Use only

## Handling

---

Format: Liquid

---

Buffer: PBS with 0.02 % sodium azide,0.05 % BSA,50 % glycerol, pH 7.3.

---

Preservative: Sodium azide

---

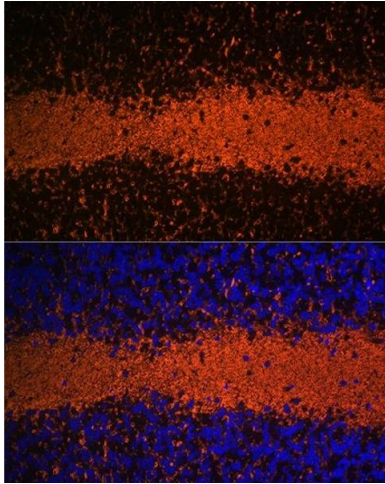
Precaution of Use: This product contains Sodium azide: a POISONOUS AND HAZARDOUS SUBSTANCE which should be handled by trained staff only.

---

Storage: -20 °C

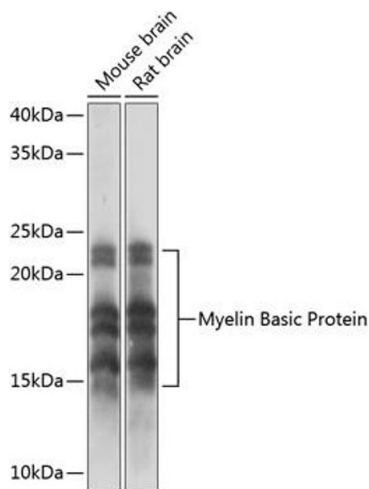
---

Storage Comment: Store at -20°C. Avoid freeze / thaw cycles.



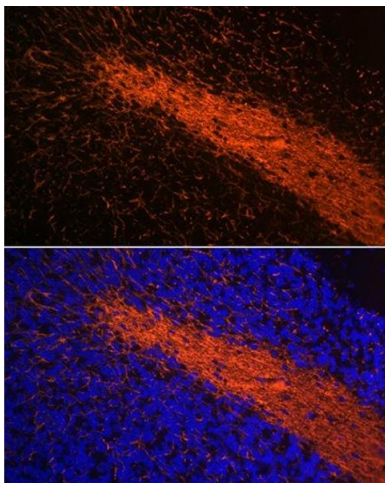
### Immunofluorescence

**Image 1.** Immunofluorescence analysis of rat brain using Myelin Basic Protein Rabbit mAb (ABIN7268431) at dilution of 1:100 (40x lens). Blue: DAPI for nuclear staining.



### Western Blotting

**Image 2.** Western blot analysis of extracts of various cell lines, using Myelin Basic Protein Rabbit mAb (ABIN7268431) at 1:1000 dilution. Secondary antibody: HRP Goat Anti-Rabbit IgG (H+L) (ABIN1684268 and ABIN3020597) at 1:10000 dilution. Lysates/proteins: 25 µg per lane. Blocking buffer: 3% nonfat dry milk in TBST. Detection: ECL Basic Kit (RM00020). Exposure time: 1s.



### Immunofluorescence

**Image 3.** Immunofluorescence analysis of mouse brain using Myelin Basic Protein Rabbit mAb (ABIN7268431) at dilution of 1:100 (40x lens). Blue: DAPI for nuclear staining.