



[Go to Product page](#)

Datasheet for ABIN7268449

## anti-MEIS1 antibody

### 5 Images

#### Overview

Quantity:	100 µL
Target:	MEIS1
Reactivity:	Human
Host:	Rabbit
Clonality:	Polyclonal
Conjugate:	This MEIS1 antibody is un-conjugated
Application:	Western Blotting (WB), Immunofluorescence (IF)

#### Product Details

Purpose:	MEIS1 Rabbit pAb
Immunogen:	A synthetic peptide of human MEIS1.
Isotype:	IgG
Cross-Reactivity:	Human, Mouse, Rat
Characteristics:	Polyclonal Antibodies
Purification:	Affinity purification

#### Target Details

Target:	MEIS1
Alternative Name:	MEIS1 ( <a href="#">MEIS1 Products</a> )
Background:	Homeobox genes, of which the most well-characterized category is represented by the HOX

## Target Details

---

genes, play a crucial role in normal development. In addition, several homeoproteins are involved in neoplasia. This gene encodes a homeobox protein belonging to the TALE ('three amino acid loop extension') family of homeodomain-containing proteins.,MEIS1,Epigenetics & Nuclear Signaling,Hematopoietic Progenitors,Stem Cells,Transcription Factors,MEIS1

Molecular Weight: 43kDa

Gene ID: 4211

UniProt: [O00470](#)

Pathways: [Chromatin Binding](#)

## Application Details

---

Application Notes: WB,1:500 - 1:2000,IF,1:50 - 1:200

Restrictions: For Research Use only

## Handling

---

Format: Liquid

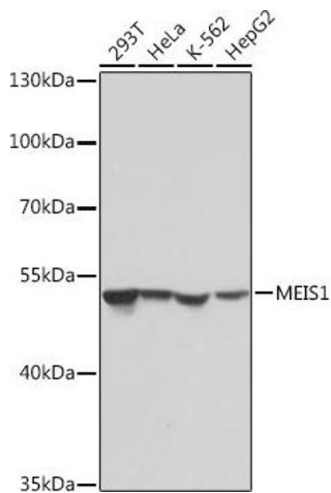
Buffer: PBS with 0.02 % sodium azide,50 % glycerol, pH 7.3.

Preservative: Sodium azide

Precaution of Use: This product contains Sodium azide: a POISONOUS AND HAZARDOUS SUBSTANCE which should be handled by trained staff only.

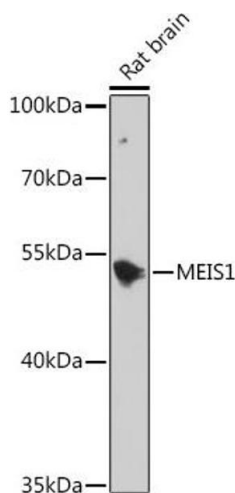
Storage: -20 °C

Storage Comment: Store at -20°C. Avoid freeze / thaw cycles.



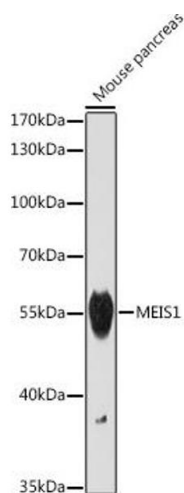
### Western Blotting

**Image 1.** Western blot analysis of extracts of various cell lines, using MEIS1 antibody (ABIN7268449) at 1:1000 dilution. Secondary antibody: HRP Goat Anti-Rabbit IgG (H+L) (ABIN1684268 and ABIN3020597) at 1:10000 dilution. Lysates/proteins: 25 µg per lane. Blocking buffer: 3 % nonfat dry milk in TBST. Detection: ECL Basic Kit (RM00020). Exposure time: 10s.



### Western Blotting

**Image 2.** Western blot analysis of extracts of Rat brain, using MEIS1 antibody (ABIN7268449) at 1:1000 dilution. Secondary antibody: HRP Goat Anti-Rabbit IgG (H+L) (ABIN1684268 and ABIN3020597) at 1:10000 dilution. Lysates/proteins: 25 µg per lane. Blocking buffer: 3 % nonfat dry milk in TBST. Detection: ECL Basic Kit (RM00020). Exposure time: 120s.



### Western Blotting

**Image 3.** Western blot analysis of extracts of Mouse pancreas, using MEIS1 antibody (ABIN7268449) at 1:1000 dilution. Secondary antibody: HRP Goat Anti-Rabbit IgG (H+L) (ABIN1684268 and ABIN3020597) at 1:10000 dilution. Lysates/proteins: 25 µg per lane. Blocking buffer: 3 % nonfat dry milk in TBST. Detection: ECL Basic Kit (RM00020). Exposure time: 120s.

Please check the [product details page](#) for more images. Overall 5 images are available for ABIN7268449.