

Datasheet for ABIN7268453
anti-MC1 Receptor antibody



[Go to Product page](#)

2 Images

Overview

Quantity:	100 µL
Target:	MC1 Receptor (MC1R)
Reactivity:	Human
Host:	Rabbit
Clonality:	Monoclonal
Conjugate:	This MC1 Receptor antibody is un-conjugated
Application:	Western Blotting (WB)

Product Details

Purpose:	MC1 Receptor Rabbit mAb
Immunogen:	A synthesized peptide derived from human MC1 Receptor
Isotype:	IgG
Cross-Reactivity:	Human, Mouse, Rat
Characteristics:	Monoclonal Antibodies
Purification:	Affinity purification

Target Details

Target:	MC1 Receptor (MC1R)
Alternative Name:	MC1R (MC1R Products)
Background:	This intronless gene encodes the receptor protein for melanocyte-stimulating hormone (MSH).

Target Details

The encoded protein, a seven pass transmembrane G protein coupled receptor, controls melanogenesis. Two types of melanin exist: red pheomelanin and black eumelanin. Gene mutations that lead to a loss in function are associated with increased pheomelanin production, which leads to lighter skin and hair color. Eumelanin is photoprotective but pheomelanin may contribute to UV-induced skin damage by generating free radicals upon UV radiation. Binding of MSH to its receptor activates the receptor and stimulates eumelanin synthesis. This receptor is a major determining factor in sun sensitivity and is a genetic risk factor for melanoma and non-melanoma skin cancer. Over 30 variant alleles have been identified which correlate with skin and hair color, providing evidence that this gene is an important component in determining normal human pigment variation. [provided by RefSeq, Jul 2008],CMM5, MSH-R, SHEP2,Endocrine & Metabolism,G protein signaling,G protein signaling_G-Protein-Coupled Receptors(GPCR),Neuroscience,Signal Transduction,MC1R

Molecular Weight: 35kDa

Gene ID: 4157

UniProt: [Q01726](#)

Pathways: [cAMP Metabolic Process](#), [Feeding Behaviour](#)

Application Details

Application Notes: WB,1:500 - 1:2000

Restrictions: For Research Use only

Handling

Format: Liquid

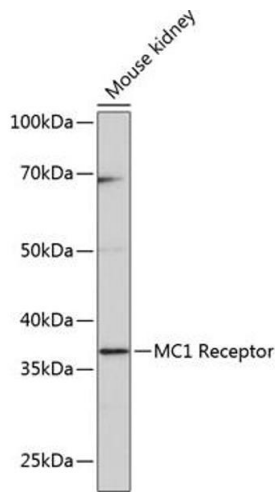
Buffer: PBS with 0.02 % sodium azide,0.05 % BSA,50 % glycerol, pH 7.3.

Preservative: Sodium azide

Precaution of Use: This product contains Sodium azide: a POISONOUS AND HAZARDOUS SUBSTANCE which should be handled by trained staff only.

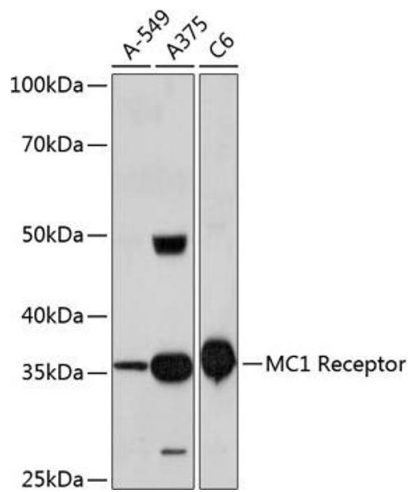
Storage: -20 °C

Storage Comment: Store at -20°C. Avoid freeze / thaw cycles.



Western Blotting

Image 1. Western blot analysis of extracts of Mouse kidney, using MC1 Receptor Rabbit mAb at 1:1000 dilution. Secondary antibody: HRP Goat Anti-Rabbit IgG (H+L) (ABIN1684268 and ABIN3020597) at 1:10000 dilution. Lysates/proteins: 25 µg per lane. Blocking buffer: 3 % nonfat dry milk in TBST. Detection: ECL Enhanced Kit (RM00021). Exposure time: 3 min.



Western Blotting

Image 2. Western blot analysis of extracts of various cell lines, using MC1 Receptor Rabbit mAb at 1:1000 dilution. Secondary antibody: HRP Goat Anti-Rabbit IgG (H+L) (ABIN1684268 and ABIN3020597) at 1:10000 dilution. Lysates/proteins: 25 µg per lane. Blocking buffer: 3 % nonfat dry milk in TBST. Detection: ECL Basic Kit (RM00020). Exposure time: 3 min.