



[Go to Product page](#)

Datasheet for ABIN7268463
anti-MLZE antibody (AA 1-100)

3 Images

Overview

Quantity:	100 µL
Target:	MLZE
Binding Specificity:	AA 1-100
Reactivity:	Human
Host:	Rabbit
Clonality:	Polyclonal
Conjugate:	This MLZE antibody is un-conjugated
Application:	Western Blotting (WB), Immunofluorescence (IF)

Product Details

Purpose:	GSDMC Rabbit pAb
Immunogen:	Recombinant fusion protein containing a sequence corresponding to amino acids 1-100 of human GSDMC (NP_113603.1).
Sequence:	MPSMLERISK NLVKEIGSKD LTPVKYLLSA TKLRQFVILR KKKDSRSSFW EQSDYVPVEF SLNDILEPSS SVLETVVTGP FHFSDIMIQQ HKADMGVNNG
Isotype:	IgG
Cross-Reactivity:	Human, Mouse
Characteristics:	Polyclonal Antibodies
Purification:	Affinity purification

Target Details

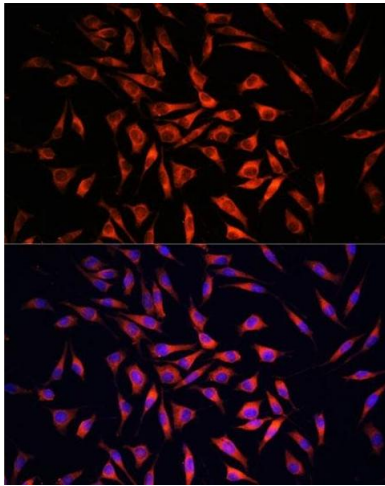
Target:	MLZE
Alternative Name:	GSDMC (MLZE Products)
Background:	[Gasdermin-C]: This form constitutes the precursor of the pore-forming protein: upon cleavage, the released N-terminal moiety (Gasdermin-C, N-terminal binds to membranes and forms pores, triggering cell death.,GSDMC,MLZE,Cancer,Tumor biomarkers,GSDMC
Molecular Weight:	57kDa
Gene ID:	56169
UniProt:	Q9BYG8

Application Details

Application Notes:	WB,1:500 - 1:2000,IF,1:50 - 1:200
Restrictions:	For Research Use only

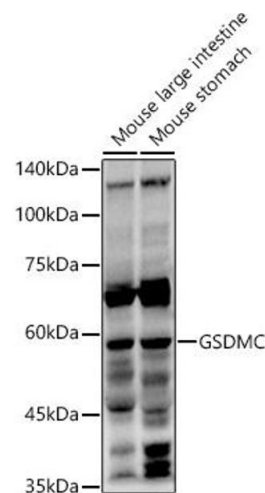
Handling

Format:	Liquid
Buffer:	PBS with 0.02 % sodium azide,50 % glycerol, pH 7.3.
Preservative:	Sodium azide
Precaution of Use:	This product contains Sodium azide: a POISONOUS AND HAZARDOUS SUBSTANCE which should be handled by trained staff only.
Storage:	-20 °C
Storage Comment:	Store at -20°C. Avoid freeze / thaw cycles.



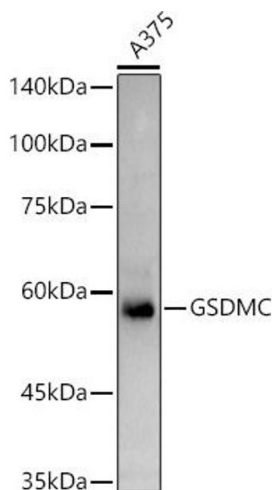
Immunofluorescence

Image 1. Immunofluorescence analysis of L929 cells using GSDMC antibody (ABIN7268463) at dilution of 1:100. Blue: DAPI for nuclear staining.



Western Blotting

Image 2. Western blot analysis of extracts of various cell lines, using GSDMC antibody (ABIN7268463) at 1:1000 dilution. Secondary antibody: HRP Goat Anti-Rabbit IgG (H+L) (ABIN1684268 and ABIN3020597) at 1:10000 dilution. Lysates/proteins: 25 µg per lane. Blocking buffer: 3 % nonfat dry milk in TBST. Detection: ECL Enhanced Kit (RM00021). Exposure time: 60s.



Western Blotting

Image 3. Western blot analysis of extracts of cells, using GSDMC antibody (ABIN7268463) at 1:1000 dilution. Secondary antibody: HRP Goat Anti-Rabbit IgG (H+L) (ABIN1684268 and ABIN3020597) at 1:10000 dilution. Lysates/proteins: 25 µg per lane. Blocking buffer: 3 % nonfat dry milk in TBST. Detection: ECL Basic Kit (RM00020). Exposure time: 90s.