



[Go to Product page](#)

Datasheet for ABIN7268472

anti-CD20 antibody

7 Images

Overview

Quantity:	100 µL
Target:	CD20 (MS4A1)
Reactivity:	Human
Host:	Rabbit
Clonality:	Monoclonal
Conjugate:	This CD20 antibody is un-conjugated
Application:	Immunofluorescence (IF), Western Blotting (WB), Immunohistochemistry (IHC)

Product Details

Purpose:	CD20 Rabbit mAb
Immunogen:	A synthesized peptide derived from human CD20
Isotype:	IgG
Cross-Reactivity:	Human
Characteristics:	Monoclonal Antibodies
Purification:	Affinity purification

Target Details

Target:	CD20 (MS4A1)
Alternative Name:	MS4A1 (MS4A1 Products)
Background:	This gene encodes a member of the membrane-spanning 4A gene family. Members of this

Target Details

nascent protein family are characterized by common structural features and similar intron/exon splice boundaries and display unique expression patterns among hematopoietic cells and nonlymphoid tissues. This gene encodes a B-lymphocyte surface molecule which plays a role in the development and differentiation of B-cells into plasma cells. This family member is localized to 11q12, among a cluster of family members. Alternative splicing of this gene results in two transcript variants which encode the same protein. [provided by RefSeq, Jul 2008],B1, Bp35, CD20, CVID5, LEU-16, MS4A2, S7,Cancer,CDs,Hematopoietic Progenitors,Immunology & Inflammation,Stem Cells,Tumor immunology,Tumor immunology_Tumor-associated antigens,MS4A1

Molecular Weight: 33kDa

Gene ID: 931

UniProt: [P11836](#)

Application Details

Application Notes: WB,1:500 - 1:2000,IHC,1:50 - 1:200,IF,1:50 - 1:200

Restrictions: For Research Use only

Handling

Format: Liquid

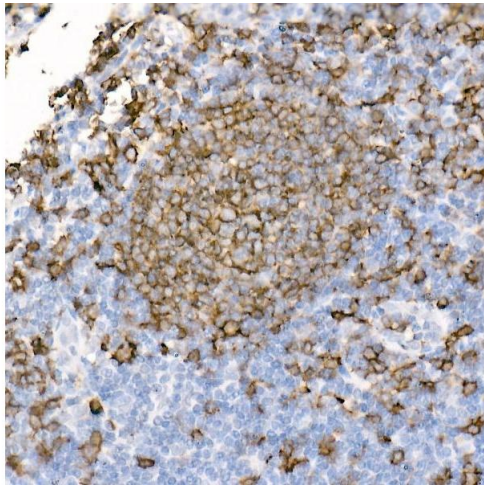
Buffer: PBS with 0.02 % sodium azide,0.05 % BSA,50 % glycerol, pH 7.3.

Preservative: Sodium azide

Precaution of Use: This product contains Sodium azide: a POISONOUS AND HAZARDOUS SUBSTANCE which should be handled by trained staff only.

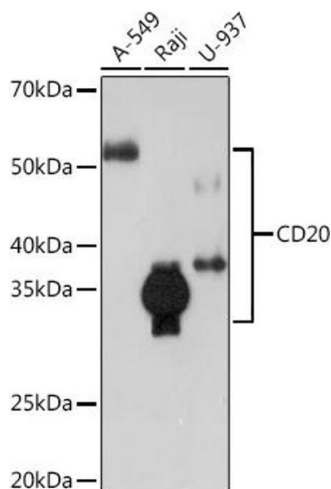
Storage: -20 °C

Storage Comment: Store at -20°C. Avoid freeze / thaw cycles.



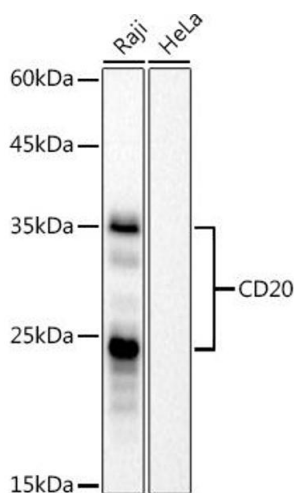
Immunohistochemistry

Image 1. Immunohistochemistry of paraffin-embedded human tonsil using CD20 antibody (ABIN7268472) at dilution of 1:100 (40x lens). Perform high pressure antigen retrieval with 10 mM citrate buffer pH 6.0 before commencing with IHC staining protocol.



Western Blotting

Image 2. Western blot analysis of extracts of various cell lines, using CD20 Rabbit mAb (ABIN7268472) at 1:1000 dilution. Secondary antibody: HRP Goat Anti-Rabbit IgG (H+L) (ABIN1684268 and ABIN3020597) at 1:10000 dilution. Lysates/proteins: 25 µg per lane. Blocking buffer: 3 % nonfat dry milk in TBST. Detection: ECL Enhanced Kit (RM00021). Exposure time: 3 min.



Western Blotting

Image 3. Western blot analysis of extracts of Raji cells, using CD20 antibody (ABIN7268472) at 1:1000 dilution. Secondary antibody: HRP Goat Anti-Rabbit IgG (H+L) (ABIN1684268 and ABIN3020597) at 1:10000 dilution. Lysates/proteins: 25 µg per lane. Blocking buffer: 3 % nonfat dry milk in TBST. Detection: ECL Basic Kit (RM00020). Exposure time: 60s.

Please check the [product details page](#) for more images. Overall 7 images are available for ABIN7268472.