

Datasheet for ABIN7268475  
**anti-MS4A7 antibody (AA 100-200)**[Go to Product page](#)

## 1 Image

## Overview

Quantity:	100 µL
Target:	MS4A7
Binding Specificity:	AA 100-200
Reactivity:	Human
Host:	Rabbit
Clonality:	Polyclonal
Conjugate:	This MS4A7 antibody is un-conjugated
Application:	Western Blotting (WB)

## Product Details

Purpose:	MS4A7 Rabbit pAb
Immunogen:	A synthetic peptide corresponding to a sequence within amino acids 100-200 of human MS4A7 (NP_067024.1).
Sequence:	SLSIISGKQS TKPFDLSSLT SNAVSSVTAG AGLFLLADSM VALRTASQHC GSEMDYLSSL PYSEYYPIY EIKDCLLTSV SLTGVLVVML IFTVLELLLA A
Isotype:	IgG
Cross-Reactivity:	Mouse
Characteristics:	Polyclonal Antibodies
Purification:	Affinity purification

## Target Details

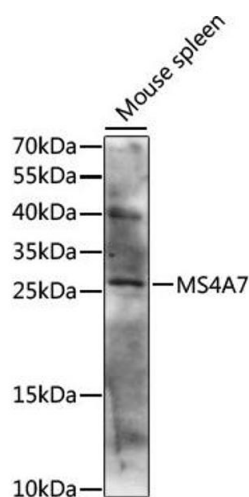
Target:	MS4A7
Alternative Name:	MS4A7 ( <a href="#">MS4A7 Products</a> )
Background:	<p>This gene encodes a member of the membrane-spanning 4A gene family, members of which are characterized by common structural features and similar intron/exon splice boundaries and display unique expression patterns in hematopoietic cells and nonlymphoid tissues. This family member is associated with mature cellular function in the monocytic lineage, and it may be a component of a receptor complex involved in signal transduction. This gene is localized to 11q12, in a cluster of other family members. At least four alternatively spliced transcript variants encoding two distinct isoforms have been observed.,MS4A7,4SPAN2,CD20L4,CFFM4,MS4A8,Cell Biology &amp; Developmental Biology,MS4A7</p>
Molecular Weight:	21kDa/26kDa
Gene ID:	58475
UniProt:	<a href="#">Q9GZW8</a>

## Application Details

Application Notes:	WB,1:200 - 1:2000
Restrictions:	For Research Use only

## Handling

Format:	Liquid
Buffer:	PBS with 0.02 % sodium azide,50 % glycerol, pH 7.3.
Preservative:	Sodium azide
Precaution of Use:	This product contains Sodium azide: a POISONOUS AND HAZARDOUS SUBSTANCE which should be handled by trained staff only.
Storage:	-20 °C
Storage Comment:	Store at -20°C. Avoid freeze / thaw cycles.



### Western Blotting

**Image 1.** Western blot analysis of extracts of mouse spleen, using MS4 antibody (ABIN7268475) at 1:1000 dilution. Secondary antibody: HRP Goat Anti-Rabbit IgG (H+L) (ABIN1684268 and ABIN3020597) at 1:10000 dilution. Lysates/proteins: 25 µg per lane. Blocking buffer: 3 % nonfat dry milk in TBST. Detection: ECL Basic Kit (RM00020). Exposure time: 10s.