



Datasheet for ABIN7268486  
**anti-MTHFSD antibody (AA 1-383)**



[Go to Product page](#)

1 Image

Overview

Quantity:	100 µL
Target:	MTHFSD
Binding Specificity:	AA 1-383
Reactivity:	Human
Host:	Rabbit
Clonality:	Polyclonal
Conjugate:	This MTHFSD antibody is un-conjugated
Application:	Western Blotting (WB)

Product Details

Purpose:	MTHFSD Rabbit pAb
Immunogen:	Recombinant fusion protein containing a sequence corresponding to amino acids 1-383 of human MTHFSD (NP_001152849.1).
Sequence:	MEPRAVGVSK QDIREQIWGY MESQNLADFP RPVHHRIPNF KGSYLACQNI KDLDVFARTQ EVKVDPKPL EGVRLVLQS KKTLLVPTPR LRTGLFNKIT PPPGATKDIL RKCATSQGVR NYSVPIGLDS RVLVDLVVVG SVAVSEKGWR IGKGEYADL EYAMMVSMGA VSKETPVVTI VHDCQVVDIP EELVEEHIT VDYILTPTRV IATGCKRPPK MGITWFKISL EMMEKIPILR SLRAREQQAG KDVTLQGEHQ HLPEPGCQQT VPLSVGRRPP DTPGPETNSM EAAPGSPPGE GAPLAADVYV GNLPGDARVS DLKRALRELG SVPLRLTWQG PRRRAFLHYP DSAAAQQAVS CLQGLRLGTD TLRVALARQQ RDK
Isotype:	IgG

## Product Details

---

Cross-Reactivity:	Mouse, Rat
Characteristics:	Polyclonal Antibodies
Purification:	Affinity purification

## Target Details

---

Target:	MTHFSD
Alternative Name:	MTHFSD ( <a href="#">MTHFSD Products</a> )
Background:	MTHFSD,Epigenetics & Nuclear Signaling,RNA Binding,Cell Biology & Developmental Biology,MTHFSD
Molecular Weight:	41kDa/42kDa
Gene ID:	64779
UniProt:	<a href="#">Q2M296</a>

## Application Details

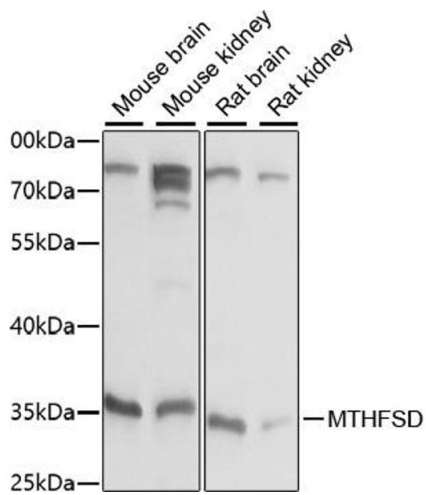
---

Application Notes:	WB,1:200 - 1:2000
Restrictions:	For Research Use only

## Handling

---

Format:	Liquid
Buffer:	PBS with 0.02 % sodium azide,50 % glycerol, pH 7.3.
Preservative:	Sodium azide
Precaution of Use:	This product contains Sodium azide: a POISONOUS AND HAZARDOUS SUBSTANCE which should be handled by trained staff only.
Storage:	-20 °C
Storage Comment:	Store at -20°C. Avoid freeze / thaw cycles.



### Western Blotting

**Image 1.** Western blot analysis of extracts of various cell lines, using MTHFSD antibody (ABIN7268486) at 1:1000 dilution. Secondary antibody: HRP Goat Anti-Rabbit IgG (H+L) (ABIN1684268 and ABIN3020597) at 1:10000 dilution. Lysates/proteins: 25 µg per lane. Blocking buffer: 3 % nonfat dry milk in TBST. Detection: ECL Basic Kit (RM00020). Exposure time: 5s.