



[Go to Product page](#)

Datasheet for ABIN7268489  
**anti-METAP1 antibody (AA 177-386)**

1 Image

Overview

Quantity:	100 µL
Target:	METAP1
Binding Specificity:	AA 177-386
Reactivity:	Human
Host:	Rabbit
Clonality:	Polyclonal
Conjugate:	This METAP1 antibody is un-conjugated
Application:	Western Blotting (WB)

Product Details

Purpose:	METAP1 Rabbit pAb
Immunogen:	Recombinant fusion protein containing a sequence corresponding to amino acids 177-386 of human METAP1 (NP_055958.2).
Sequence:	RNCYPSPLNY YNFPKSCCTS VNEVICHGIP DRRPLQEGDI VNVDITLYRN GYHGDLNETF FVGEVDDGAR KLVQTTYECL MQAIDAVKPG VRYRELGNI QKHAQANGFS VRSYCGHGI HKL FHTAPNV PHYAKNKAVG VMKSGHVFTI EPMICEGGWQ DETWPDGWTA VTRDGKRSAQ FEHTLLVTD T GCEILTRRLD SARPHFMSQF
Isotype:	IgG
Cross-Reactivity:	Mouse, Rat
Characteristics:	Polyclonal Antibodies

## Product Details

---

Purification: Affinity purification

## Target Details

---

Target: METAP1

Alternative Name: METAP1 ([METAP1 Products](#))

Background: Cotranslationally removes the N-terminal methionine from nascent proteins. The N-terminal methionine is often cleaved when the second residue in the primary sequence is small and uncharged (Met-Ala-, Cys, Gly, Pro, Ser, Thr, or Val. Required for normal progression through the cell cycle.,METAP1,MAP1A,MetAP1A,Cancer,Signal Transduction,Endocrine & Metabolism,Amino acid metabolism,METAP1

Molecular Weight: 43kDa

Gene ID: 23173

UniProt: [P53582](#)

Pathways: [Regulation of G-Protein Coupled Receptor Protein Signaling](#)

## Application Details

---

Application Notes: WB,1:500 - 1:2000

Restrictions: For Research Use only

## Handling

---

Format: Liquid

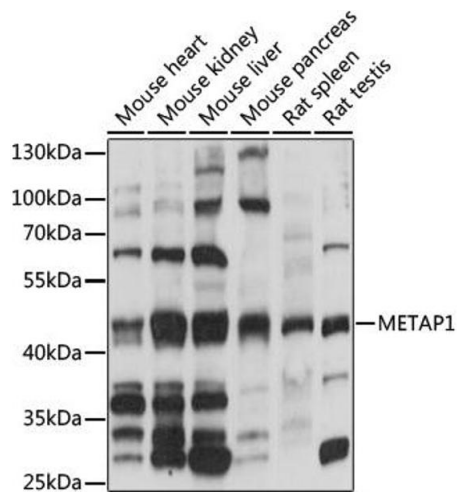
Buffer: PBS with 0.02 % sodium azide,50 % glycerol, pH 7.3.

Preservative: Sodium azide

Precaution of Use: This product contains Sodium azide: a POISONOUS AND HAZARDOUS SUBSTANCE which should be handled by trained staff only.

Storage: -20 °C

Storage Comment: Store at -20°C. Avoid freeze / thaw cycles.



### Western Blotting

**Image 1.** Western blot analysis of extracts of various cell lines, using MET antibody (ABIN7268489) at 1:1000 dilution. Secondary antibody: HRP Goat Anti-Rabbit IgG (H+L) (ABIN1684268 and ABIN3020597) at 1:10000 dilution. Lysates/proteins: 25 µg per lane. Blocking buffer: 3 % nonfat dry milk in TBST. Detection: ECL Basic Kit (RM00020). Exposure time: 1s.