

Datasheet for ABIN7268490

**anti-METAP2 antibody****2** Images[Go to Product page](#)

## Overview

Quantity:	100 µL
Target:	METAP2
Reactivity:	Human
Host:	Rabbit
Clonality:	Monoclonal
Conjugate:	This METAP2 antibody is un-conjugated
Application:	Western Blotting (WB)

## Product Details

Purpose:	METAP2 Rabbit mAb
Immunogen:	A synthesized peptide derived from human METAP2
Isotype:	IgG
Cross-Reactivity:	Human, Mouse, Rat
Characteristics:	Monoclonal Antibodies
Purification:	Affinity purification

## Target Details

Target:	METAP2
Alternative Name:	METAP2 ( <a href="#">METAP2 Products</a> )
Background:	The protein encoded by this gene is a member of the methionyl aminopeptidase family. The

## Target Details

encoded protein functions both by protecting the alpha subunit of eukaryotic initiation factor 2 from inhibitory phosphorylation and by removing the amino-terminal methionine residue from nascent proteins. Increased expression of this gene is associated with various forms of cancer, and the anti-cancer drugs fumagillin and ovalicin inhibit the protein by irreversibly binding to its active site. Inhibitors of this gene have also been shown to be effective for the treatment of obesity. A pseudogene of this gene is located on chromosome 2. Several transcript variants encoding different isoforms have been found for this gene. [provided by RefSeq, Nov 2015],MAP2, MNPEP, p67eIF2,Amino acid metabolism,Cancer,Endocrine & Metabolism,Epigenetics & Nuclear Signaling,RNA Binding,Signal Transduction,METAP2

Molecular Weight: 67kDa

Gene ID: 10988

UniProt: [P50579](#)

Pathways: [Regulation of G-Protein Coupled Receptor Protein Signaling](#)

## Application Details

Application Notes: WB,1:500 - 1:2000

Restrictions: For Research Use only

## Handling

Format: Liquid

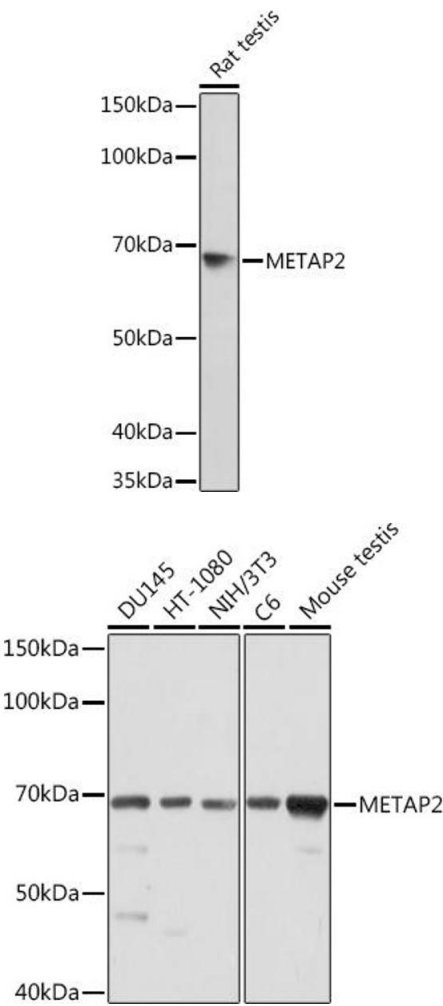
Buffer: PBS with 0.02 % sodium azide,0.05 % BSA,50 % glycerol, pH 7.3.

Preservative: Sodium azide

Precaution of Use: This product contains Sodium azide: a POISONOUS AND HAZARDOUS SUBSTANCE which should be handled by trained staff only.

Storage: -20 °C

Storage Comment: Store at -20°C. Avoid freeze / thaw cycles.



### Western Blotting

**Image 1.** Western blot analysis of extracts of Rat testis, using MET Rabbit mAb (ABIN7268490) at 1:1000 dilution. Secondary antibody: HRP Goat Anti-Rabbit IgG (H+L) (ABIN1684268 and ABIN3020597) at 1:10000 dilution. Lysates/proteins: 25 µg per lane. Blocking buffer: 3 % nonfat dry milk in TBST. Detection: ECL Basic Kit (RM00020). Exposure time: 10s.

### Western Blotting

**Image 2.** Western blot analysis of extracts of various cell lines, using MET Rabbit mAb (ABIN7268490) at 1:1000 dilution. Secondary antibody: HRP Goat Anti-Rabbit IgG (H+L) (ABIN1684268 and ABIN3020597) at 1:10000 dilution. Lysates/proteins: 25 µg per lane. Blocking buffer: 3 % nonfat dry milk in TBST. Detection: ECL Basic Kit (RM00020). Exposure time: 30s.