



Datasheet for ABIN7268499
anti-MRI1 antibody (AA 1-369)



[Go to Product page](#)

1 Image

Overview

Quantity:	100 µL
Target:	MRI1 (Mri1)
Binding Specificity:	AA 1-369
Reactivity:	Human
Host:	Rabbit
Clonality:	Polyclonal
Conjugate:	This MRI1 antibody is un-conjugated
Application:	Western Blotting (WB)

Product Details

Purpose:	MRI1 Rabbit pAb
Immunogen:	Recombinant fusion protein containing a sequence corresponding to amino acids 1-369 of human MRI1 (NP_001026897.1).
Sequence:	MTLEAIRYSR GSLQILDQLL LPKQSRYEAV GSVHQAW EAI RAMKVRGAPA IALVGCLSLA VELQAGAGGP GLAALVAFVR DKLSFLVTAR PTAVNMARAA RDLADVAARE AEREGATEEA VRERVICCTE DMLEKDLRDN RSIGDLGARH LLERVAPSGG KVTVLTHCNT GALATAGYGT ALGVIRSLHS LGRLEHAFCT ETRPYNQGAR LTAFELVYEQ IPATLITDSM VAAAMAHRGV SAVVVGADRV VANGDTANKV GTYQLAIVAK HHGIPFYVAA PSSCDLRLE TGKEIIIIEER PGQELTDVNG VRIAAPGIGV WNPAFDVTPH DLITGGIITE LGVFAPEELR TALTTTISSR DGTLDGPQM
Isotype:	IgG

Product Details

Cross-Reactivity: Human, Mouse, Rat

Characteristics: Polyclonal Antibodies

Purification: Affinity purification

Target Details

Target: MRI1 (Mri1)

Alternative Name: MRI1 ([Mri1 Products](#))

Background: This enzyme functions in the methionine salvage pathway by catalyzing the interconversion of methylthioribose-1-phosphate and methylthioribulose-1-phosphate. Elevated expression of the encoded protein is associated with metastatic melanoma and this protein promotes melanoma cell invasion independent of its enzymatic activity. Mutations in this gene may be associated with vanishing white matter disease (VMWD),MRI1,M1Pi,MRDI,MTNA,Ypr118w,Epigenetics & Nuclear Signaling,Signal Transduction,Endocrine & Metabolism,Nucleotide metabolism,MRI1

Molecular Weight: 34kDa/39kDa

Gene ID: 84245

UniProt: [Q9BV20](#)

Pathways: [Methionine Biosynthetic Process](#)

Application Details

Application Notes: WB,1:500 - 1:2000

Restrictions: For Research Use only

Handling

Format: Liquid

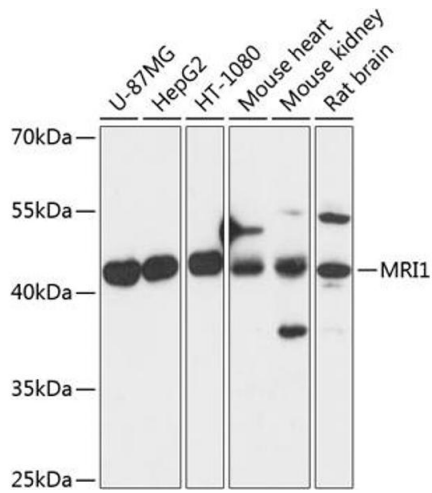
Buffer: PBS with 0.02 % sodium azide,50 % glycerol, pH 7.3.

Preservative: Sodium azide

Precaution of Use: This product contains Sodium azide: a POISONOUS AND HAZARDOUS SUBSTANCE which should be handled by trained staff only.

Storage: -20 °C

Storage Comment: Store at -20°C. Avoid freeze / thaw cycles.



Western Blotting

Image 1. Western blot analysis of extracts of various cell lines, using MRI1 antibody at 1:3000 dilution. Secondary antibody: HRP Goat Anti-Rabbit IgG (H+L) (ABIN1684268 and ABIN3020597) at 1:10000 dilution. Lysates/proteins: 25 µg per lane. Blocking buffer: 3% nonfat dry milk in TBST. Detection: ECL Basic Kit (RM00020). Exposure time: 1s.