

Datasheet for ABIN7268501
anti-METTL16 antibody (AA 263-562)[Go to Product page](#)

7 Images

Overview

Quantity:	100 µL
Target:	METTL16
Binding Specificity:	AA 263-562
Reactivity:	Human
Host:	Rabbit
Clonality:	Polyclonal
Conjugate:	This METTL16 antibody is un-conjugated
Application:	Western Blotting (WB), Immunohistochemistry (IHC), Immunofluorescence (IF), Immunoprecipitation (IP)

Product Details

Purpose:	METTL16 Rabbit pAb
Immunogen:	Recombinant fusion protein containing a sequence corresponding to amino acids 263-562 of human METTL16 (NP_076991.3).
Sequence:	RIQGVPKVTY TEFCQGR TMR WALAWSFYDD VTPSPPSKR RKLEKPRKPI TFVVLASVMK ELSLKASPLR SETAEGIVVV TTWIEKILTD LKVQHKRVPC GKEEVSFLT AIENSWIHLR RKKRERVRQL REVPRAPEDV IQALEEKKPT PKESGNSQEL ARGPQERTPC GPALREGAAA AVEGPCPSQE SLSQEENPEP TEDERSEEKG GVEVLESCQG SSNGAQDQEA SEQFGSPVAE RGKRLPGVAG QYLFKCLINV KKEVDDALVE MHWVEGQNRD LMNQLCTYIR NQIFRLVAVN
Isotype:	IgG
Cross-Reactivity:	Human, Mouse, Rat

Product Details

Characteristics: Polyclonal Antibodies

Purification: Affinity purification

Target Details

Target: METTL16

Alternative Name: METTL16 ([METTL16 Products](#))

Background: RNA N6-methyltransferase that methylates adenosine residues at the N6 position of a subset of RNAs and is involved in S-adenosyl-L-methionine homeostasis by regulating expression of MAT2A transcripts. Able to N6-methylate a subset of mRNAs and U6 small nuclear RNAs (U6 snRNAs). In contrast to the METTL3-METTL14 heterodimer, only able to methylate a limited number of RNAs: requires both a 5'UACAGAGAA-3' nonamer sequence and a specific RNA structure. Plays a key role in S-adenosyl-L-methionine homeostasis by mediating N6-methylation of MAT2A mRNAs, altering splicing of MAT2A transcripts: in presence of S-adenosyl-L-methionine, binds the 3'-UTR region of MAT2A mRNA and specifically N6-methylates the first hairpin of MAT2A mRNA, preventing recognition of their 3'-splice site by U2AF1/U2AF35, thereby inhibiting splicing and protein production of S-adenosylmethionine synthase. In S-adenosyl-L-methionine-limiting conditions, binds the 3'-UTR region of MAT2A mRNA but stalls due to the lack of a methyl donor, preventing N6-methylation and promoting expression of MAT2A. In addition to mRNAs, also able to mediate N6-methylation of U6 small nuclear RNA (U6 snRNA: specifically N6-methylates adenine in position 43 of U6 snRNAs. Also able to bind various lncRNAs, such as 7SK snRNA (7SK RNA or 7SL RNA. Specifically binds the 3'-end of the MALAT1 long non-coding RNA.,METTL16,METT10D,Epigenetics & Nuclear Signaling,RNA Binding,Cell Biology & Developmental Biology,METTL16

Molecular Weight: 25kDa/63kDa

Gene ID: 79066

UniProt: [Q86W50](#)

Application Details

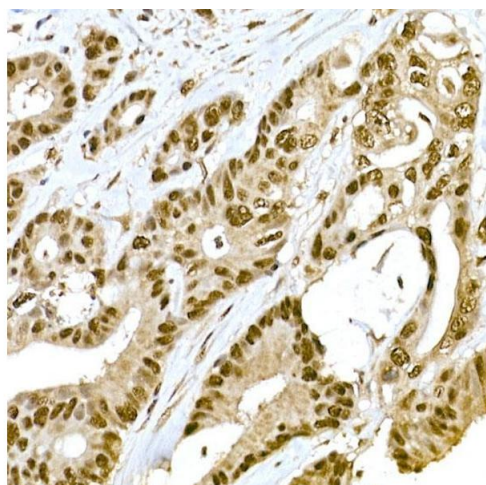
Application Notes: WB,1:500 - 1:2000,IHC,1:50 - 1:200,IF,1:50 - 1:200,IP,1:50 - 1:200

Restrictions: For Research Use only

Handling

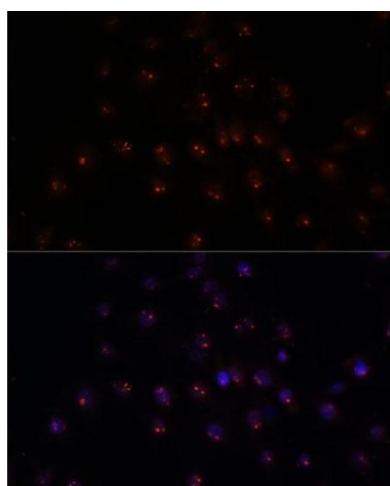
Format:	Liquid
Buffer:	PBS with 0.02 % sodium azide, 50 % glycerol, pH 7.3.
Preservative:	Sodium azide
Precaution of Use:	This product contains Sodium azide: a POISONOUS AND HAZARDOUS SUBSTANCE which should be handled by trained staff only.
Storage:	-20 °C
Storage Comment:	Store at -20°C. Avoid freeze / thaw cycles.

Images



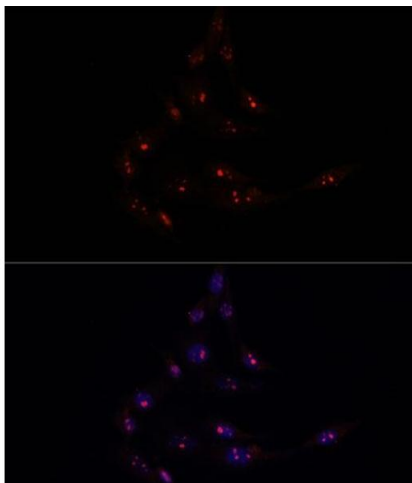
Immunohistochemistry

Image 1. Immunohistochemistry of paraffin-embedded human colon carcinoma using METTL16 Rabbit pAb (ABIN7268501) at dilution of 1:100 (40x lens). Perform high pressure antigen retrieval with 10 mM citrate buffer pH 6.0 before commencing with IHC staining protocol.



Immunofluorescence

Image 2. Immunofluorescence analysis of C6 cells using METTL16 antibody (ABIN7268501) at dilution of 1:100. Blue: DAPI for nuclear staining.



Immunofluorescence

Image 3. Immunofluorescence analysis of NIH/3T3 cells using METTL16 antibody (ABIN7268501) at dilution of 1:100. Blue: DAPI for nuclear staining.

Please check the [product details page](#) for more images. Overall 7 images are available for ABIN7268501.