

Datasheet for ABIN7268511

anti-MITF antibody

7 Images

[Go to Product page](#)

Overview

Quantity:	100 µL
Target:	MITF
Reactivity:	Human
Host:	Rabbit
Clonality:	Monoclonal
Conjugate:	This MITF antibody is un-conjugated
Application:	Western Blotting (WB), Immunofluorescence (IF), Immunohistochemistry (IHC)

Product Details

Purpose:	MITF Rabbit mAb
Immunogen:	A synthesized peptide derived from human MITF
Isotype:	IgG
Cross-Reactivity:	Human, Mouse, Rat
Characteristics:	Monoclonal Antibodies
Purification:	Affinity purification

Target Details

Target:	MITF
Alternative Name:	MITF (MITF Products)
Background:	This gene encodes a transcription factor that contains both basic helix-loop-helix and leucine

Target Details

zipper structural features. It regulates the differentiation and development of melanocytes retinal pigment epithelium and is also responsible for pigment cell-specific transcription of the melanogenesis enzyme genes. Heterozygous mutations in the this gene cause auditory-pigmentary syndromes, such as Waardenburg syndrome type 2 and Tietz syndrome. Alternatively spliced transcript variants encoding different isoforms have been identified. [provided by RefSeq, Jul 2008],CMM8, COMMAD, MI, WS2, WS2A, bHLHe32,Cell Intrinsic Innate Immunity Signaling Pathway,Epigenetics & Nuclear Signaling,Immunology & Inflammation,MAPK-Erk Signaling Pathway,Signal Transduction,Transcription Factors,MITF

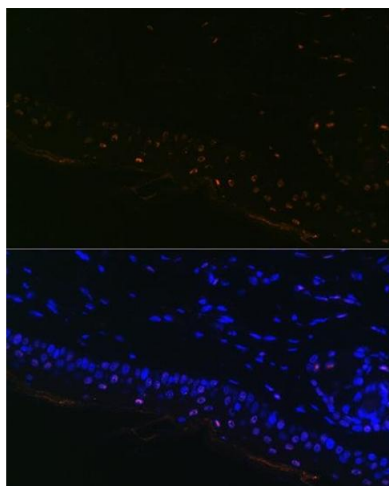
Molecular Weight:	52kDa
Gene ID:	4286
UniProt:	O75030
Pathways:	Chromatin Binding

Application Details

Application Notes:	WB,1:500 - 1:2000,IHC,1:50 - 1:200,IF,1:50 - 1:200
Restrictions:	For Research Use only

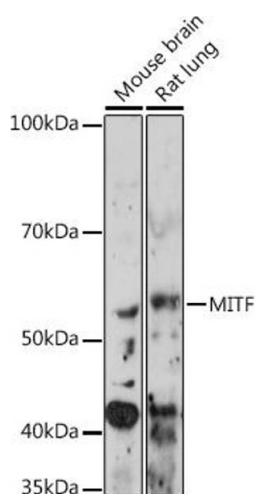
Handling

Format:	Liquid
Buffer:	PBS with 0.02 % sodium azide,0.05 % BSA,50 % glycerol, pH 7.3.
Preservative:	Sodium azide
Precaution of Use:	This product contains Sodium azide: a POISONOUS AND HAZARDOUS SUBSTANCE which should be handled by trained staff only.
Storage:	-20 °C
Storage Comment:	Store at -20°C. Avoid freeze / thaw cycles.



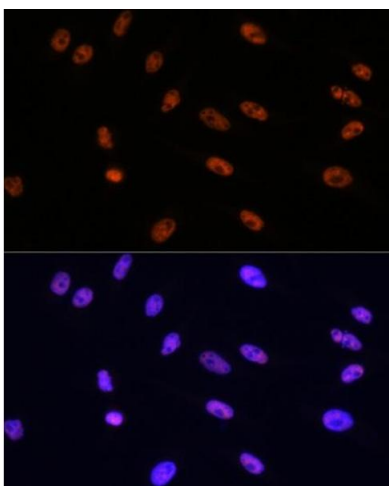
Immunofluorescence

Image 1. Immunofluorescence analysis of Mouse tail and ear using MITF Rabbit mAb (ABIN7268511) at dilution of 1:100 (40x lens). Blue: DAPI for nuclear staining.



Western Blotting

Image 2. Western blot analysis of extracts of various cell lines, using MITF Rabbit mAb (ABIN7268511) at 1:1000 dilution. Secondary antibody: HRP Goat Anti-Rabbit IgG (H+L) (ABIN1684268 and ABIN3020597) at 1:10000 dilution. Lysates/proteins: 25 µg per lane. Blocking buffer: 3 % nonfat dry milk in TBST. Detection: ECL Enhanced Kit (RM00021). Exposure time: 3 min.



Immunofluorescence

Image 3. Immunofluorescence analysis of HeLa cells using MITF Rabbit mAb (ABIN7268511) at dilution of 1:100 (40x lens). Blue: DAPI for nuclear staining.

Please check the [product details page](#) for more images. Overall 7 images are available for ABIN7268511.