

Datasheet for ABIN7268512

anti-MGST1 antibody

7 Images

[Go to Product page](#)

Overview

Quantity:	100 µL
Target:	MGST1
Reactivity:	Human
Host:	Rabbit
Clonality:	Monoclonal
Conjugate:	This MGST1 antibody is un-conjugated
Application:	Western Blotting (WB), Immunohistochemistry (IHC), Immunofluorescence (IF)

Product Details

Purpose:	MGST1 Rabbit mAb
Immunogen:	A synthesized peptide derived from human MGST1.
Isotype:	IgG
Cross-Reactivity:	Human, Mouse, Rat
Characteristics:	Monoclonal Antibodies
Purification:	Affinity purification

Target Details

Target:	MGST1
Alternative Name:	MGST1 (MGST1 Products)
Background:	The MAPEG (Membrane Associated Proteins in Eicosanoid and Glutathione metabolism) family

Target Details

consists of six human proteins, two of which are involved in the production of leukotrienes and prostaglandin E, important mediators of inflammation. Other family members, demonstrating glutathione S-transferase and peroxidase activities, are involved in cellular defense against toxic, carcinogenic, and pharmacologically active electrophilic compounds. This gene encodes a protein that catalyzes the conjugation of glutathione to electrophiles and the reduction of lipid hydroperoxides. This protein is localized to the endoplasmic reticulum and outer mitochondrial membrane where it is thought to protect these membranes from oxidative stress. Several transcript variants, some non-protein coding and some protein coding, have been found for this gene.,MGST1, GST12, MGST, MGST-l, microsomal glutathione S-transferase 1,Cell Biology & Developmental Biology,Endocrine & Metabolism,MGST1

Molecular Weight: 15kDa

Gene ID: 4257

UniProt: [P10620](#)

Application Details

Application Notes: WB,1:500 - 1:2000,IHC,1:50 - 1:200,IF,1:50 - 1:200

Restrictions: For Research Use only

Handling

Format: Liquid

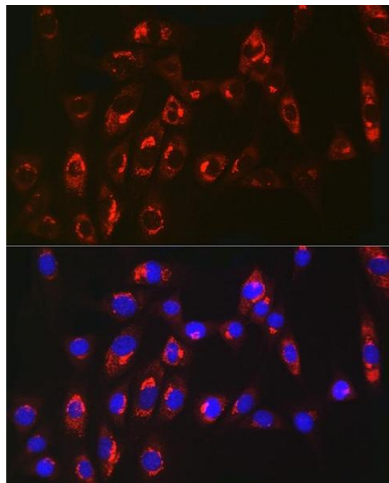
Buffer: PBS with 0.02 % sodium azide,0.05 % BSA,50 % glycerol, pH 7.3.

Preservative: Sodium azide

Precaution of Use: This product contains Sodium azide: a POISONOUS AND HAZARDOUS SUBSTANCE which should be handled by trained staff only.

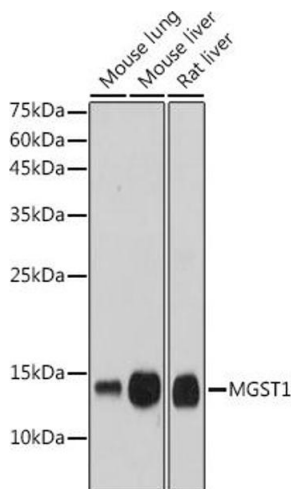
Storage: -20 °C

Storage Comment: Store at -20°C. Avoid freeze / thaw cycles.



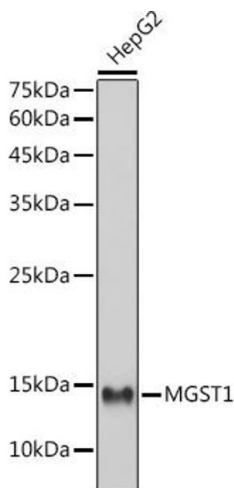
Immunofluorescence

Image 1. Immunofluorescence analysis of NIH/3T3 cells using MGST1 Rabbit mAb (ABIN7268512) at dilution of 1:100 (40x lens). Blue: DAPI for nuclear staining.



Western Blotting

Image 2. Western blot analysis of extracts of various cell lines, using MGST1 antibody (ABIN7268512) at 1:1000 dilution. Secondary antibody: HRP Goat Anti-Rabbit IgG (H+L) (ABIN1684268 and ABIN3020597) at 1:10000 dilution. Lysates/proteins: 25 µg per lane. Blocking buffer: 3 % nonfat dry milk in TBST. Detection: ECL Basic Kit (RM00020). Exposure time: 1 s.



Western Blotting

Image 3. Western blot analysis of extracts of HepG2 cells, using MGST1 antibody (ABIN7268512) at 1:1000 dilution. Secondary antibody: HRP Goat Anti-Rabbit IgG (H+L) (ABIN1684268 and ABIN3020597) at 1:10000 dilution. Lysates/proteins: 25 µg per lane. Blocking buffer: 3 % nonfat dry milk in TBST. Detection: ECL Basic Kit (RM00020). Exposure time: 1 s.

Please check the [product details page](#) for more images. Overall 7 images are available for ABIN7268512.