

Datasheet for ABIN7268517  
**anti-MAP1LC3A antibody**[Go to Product page](#)

## 4 Images

## Overview

Quantity:	100 µL
Target:	MAP1LC3A
Reactivity:	Human
Host:	Rabbit
Clonality:	Monoclonal
Conjugate:	This MAP1LC3A antibody is un-conjugated
Application:	Western Blotting (WB), Immunohistochemistry (IHC), Immunoprecipitation (IP)

## Product Details

Purpose:	MAP1LC3A Rabbit mAb
Immunogen:	A synthesized peptide derived from human MAP1LC3A
Isotype:	IgG
Cross-Reactivity:	Human, Mouse, Rat
Characteristics:	Monoclonal Antibodies
Purification:	Affinity purification

## Target Details

Target:	MAP1LC3A
Alternative Name:	MAP1LC3A ( <a href="#">MAP1LC3A Products</a> )
Background:	MAP1A and MAP1B are microtubule-associated proteins which mediate the physical

## Target Details

interactions between microtubules and components of the cytoskeleton. MAP1A and MAP1B each consist of a heavy chain subunit and multiple light chain subunits. The protein encoded by this gene is one of the light chain subunits and can associate with either MAP1A or MAP1B. Two transcript variants encoding different isoforms have been found for this gene. The expression of variant 1 is suppressed in many tumor cell lines, suggesting that may be involved in carcinogenesis. [provided by RefSeq, Feb 2012],ATG8E, LC3, LC3A, MAP1ALC3, MAP1BLC3,Autophagy,Autophagy\_ATGs,Cancer,Cardiovascular,Cell Biology & Developmental Biology,Cytoskeleton,Cytoskeleton\_Microtubules,Endocrine & Metabolism,Heart,Mitochondrial metabolism,MAP1LC3A

Molecular Weight: 16kDa

Gene ID: 84557

UniProt: [Q9H492](#)

Pathways: [Autophagy](#)

## Application Details

Application Notes: WB,1:500 - 1:2000, IHC,1:50 - 1:200,IP,1:50 - 1:200

Restrictions: For Research Use only

## Handling

Format: Liquid

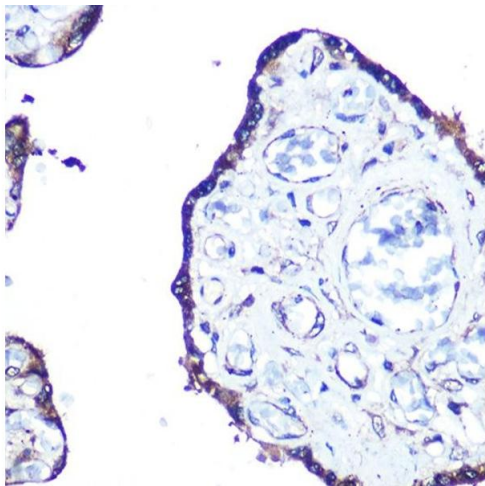
Buffer: PBS with 0.02 % sodium azide,0.05 % BSA,50 % glycerol, pH 7.3.

Preservative: Sodium azide

Precaution of Use: This product contains Sodium azide: a POISONOUS AND HAZARDOUS SUBSTANCE which should be handled by trained staff only.

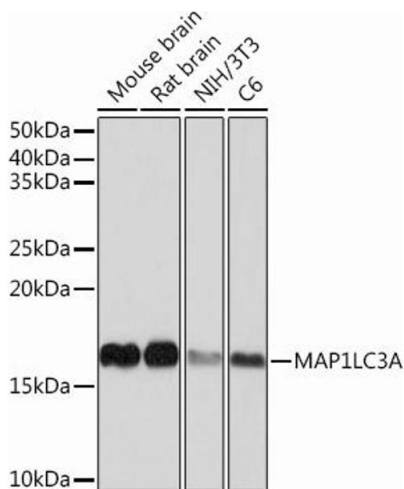
Storage: -20 °C

Storage Comment: Store at -20°C. Avoid freeze / thaw cycles.



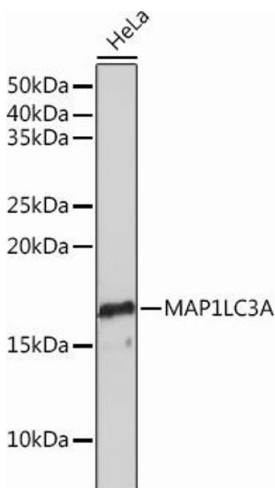
### Immunohistochemistry

**Image 1.** Immunohistochemistry of paraffin-embedded human esophageal using MLC3A Rabbit mAb (ABIN7268517) at dilution of 1:100 (40x lens). Perform microwave antigen retrieval with 10 mM PBS buffer pH 7.2 before commencing with IHC staining protocol.



### Western Blotting

**Image 2.** Western blot analysis of extracts of various cell lines, using MLC3A Rabbit mAb (ABIN7268517) at 1:1000 dilution. Secondary antibody: HRP Goat Anti-Rabbit IgG (H+L) (ABIN1684268 and ABIN3020597) at 1:10000 dilution. Lysates/proteins: 25 µg per lane. Blocking buffer: 3 % nonfat dry milk in TBST. Detection: ECL Basic Kit (RM00020). Exposure time: 1s.



### Western Blotting

**Image 3.** Western blot analysis of extracts of HeLa cells, using MLC3A Rabbit mAb (ABIN7268517) at 1:1000 dilution. Secondary antibody: HRP Goat Anti-Rabbit IgG (H+L) (ABIN1684268 and ABIN3020597) at 1:10000 dilution. Lysates/proteins: 25 µg per lane. Blocking buffer: 3 % nonfat dry milk in TBST. Detection: ECL Basic Kit (RM00020). Exposure time: 90s.

Please check the [product details page](#) for more images. Overall 4 images are available for ABIN7268517.