

Datasheet for ABIN7268523  
**anti-MAPT antibody (pSer396)**[Go to Product page](#)

## 4 Images

## Overview

Quantity:	100 µL
Target:	MAPT
Binding Specificity:	pSer396
Reactivity:	Human
Host:	Rabbit
Clonality:	Monoclonal
Conjugate:	This MAPT antibody is un-conjugated
Application:	Western Blotting (WB), Immunohistochemistry (IHC)

## Product Details

Purpose:	Phospho-Tau-S396 Rabbit mAb
Immunogen:	A phospho specific peptide corresponding to residues surrounding S396 of human Tau
Isotype:	IgG
Cross-Reactivity:	Human, Mouse, Rat
Characteristics:	Phosphorylated Antibodies
Purification:	Affinity purification

## Target Details

Target:	MAPT
Alternative Name:	MAPT ( <a href="#">MAPT Products</a> )

## Target Details

**Background:** This gene encodes the microtubule-associated protein tau (MAPT) whose transcript undergoes complex, regulated alternative splicing, giving rise to several mRNA species. MAPT transcripts are differentially expressed in the nervous system, depending on stage of neuronal maturation and neuron type. MAPT gene mutations have been associated with several neurodegenerative disorders such as Alzheimer's disease, Pick's disease, frontotemporal dementia, cortico-basal degeneration and progressive supranuclear palsy. [provided by RefSeq, Jul 2008],DDPAC, FTDP-17, MAPTL, MSTD, MTBT1, MTBT2, PPND, PPP1R103, TAU,Apoptosis,Cell Biology & Developmental Biology,Cell Type Marker,Cell Type Marker\_Axon marker,Cell Type Marker\_Neural Stem Cell marker,Cell Type Marker\_Neuron marker,Cytoskeleton,Cytoskeleton\_Microtubules,MAPK-P38 Signaling Pathway,Neurodegenerative Diseases,Neurodegenerative Diseases\_Amyloid Plaque and Neurofibrillary Tangle Formation in Alzheimers Disease,Neuroscience,Protein phosphorylation,Signal Transduction,Stem Cells,MAPT

**Molecular Weight:** 50-80kDa

**Gene ID:** 4137

**UniProt:** [P10636](#)

**Pathways:** [MAPK Signaling](#), [Microtubule Dynamics](#), [M Phase](#), [Regulation of Cell Size](#)

## Application Details

**Application Notes:** WB,1:500 - 1:2000,IHC,1:50 - 1:200

**Restrictions:** For Research Use only

## Handling

**Format:** Liquid

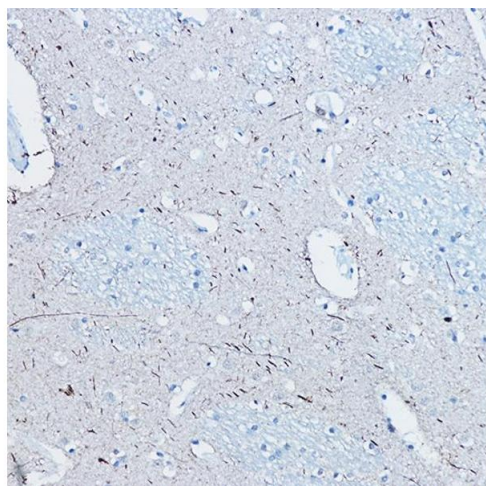
**Buffer:** PBS with 0.02 % sodium azide,0.05 % BSA,50 % glycerol, pH 7.3.

**Preservative:** Sodium azide

**Precaution of Use:** This product contains Sodium azide: a POISONOUS AND HAZARDOUS SUBSTANCE which should be handled by trained staff only.

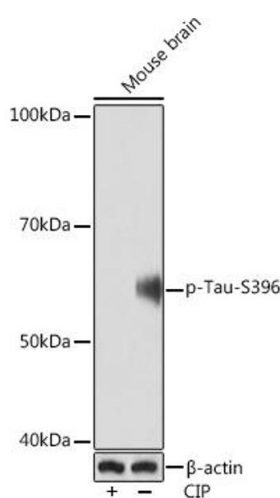
**Storage:** -20 °C

**Storage Comment:** Store at -20°C. Avoid freeze / thaw cycles.



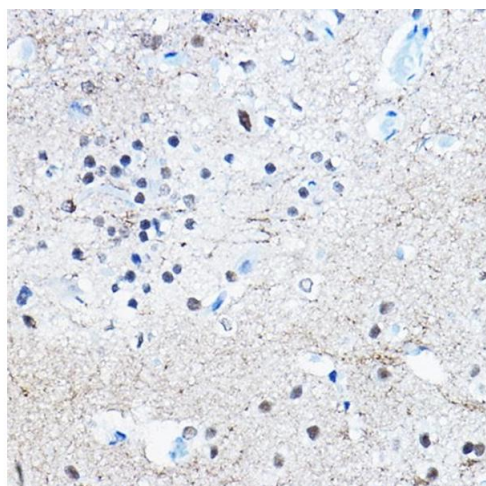
### Immunohistochemistry

**Image 1.** Immunohistochemistry of paraffin-embedded human brain using Phospho-Tau-S396 Rabbit mAb (ABIN7268523) at dilution of 1:100 (40x lens). Perform high pressure antigen retrieval with 10 mM citrate buffer pH 6.0 before commencing with IHC staining protocol.



### Western Blotting

**Image 2.** Western blot analysis of extracts of Mouse brain, using Phospho-Tau-S396 Rabbit mAb (ABIN7268523) at 1:1000 dilution. Mouse brain were treated by CIP(20uL/400 µL) at 37 °C for 1 hour. Secondary antibody: HRP Goat Anti-Rabbit IgG (H+L) (ABIN1684268 and ABIN3020597) at 1:10000 dilution. Lysates/proteins: 25 µg per lane. Blocking buffer: 3 % BSA. Detection: ECL Basic Kit (RM00020). Exposure time: 90s.



### Immunohistochemistry

**Image 3.** Immunohistochemistry of paraffin-embedded rat brain using Phospho-Tau-S396 Rabbit mAb (ABIN7268523) at dilution of 1:100 (40x lens). Perform high pressure antigen retrieval with 10 mM citrate buffer pH 6.0 before commencing with IHC staining protocol.

Please check the [product details page](#) for more images. Overall 4 images are available for ABIN7268523.