



Datasheet for ABIN7268547
anti-MSH2 antibody



[Go to Product page](#)

3 Images

Overview

Quantity:	100 µL
Target:	MSH2
Reactivity:	Human
Host:	Rabbit
Clonality:	Monoclonal
Conjugate:	This MSH2 antibody is un-conjugated
Application:	Western Blotting (WB), Immunohistochemistry (IHC)

Product Details

Purpose:	MSH2 Rabbit mAb
Immunogen:	A synthesized peptide derived from human MSH2
Isotype:	IgG
Cross-Reactivity:	Human, Mouse, Rat
Characteristics:	Monoclonal Antibodies
Purification:	Affinity purification

Target Details

Target:	MSH2
Alternative Name:	MSH2 (MSH2 Products)
Background:	This locus is frequently mutated in hereditary nonpolyposis colon cancer (HNPCC). When

Target Details

cloned, it was discovered to be a human homolog of the E. coli mismatch repair gene mutS, consistent with the characteristic alterations in microsatellite sequences (RER+ phenotype) found in HNPCC. Two transcript variants encoding different isoforms have been found for this gene. [provided by RefSeq, Apr 2012],COCA1, FCC1, HNPCC, HNPCC1, LCFS2,Apoptosis,Cancer,Cell Biology & Developmental Biology,DNA Damage & Repair,Epigenetics & Nuclear Signaling,Tumor suppressors,MSH2

Molecular Weight: 105kDa

Gene ID: 4436

UniProt: [P43246](#)

Pathways: [DNA Damage Repair](#), [Production of Molecular Mediator of Immune Response](#)

Application Details

Application Notes: WB,1:500 - 1:2000,IHC,1:50 - 1:200

Restrictions: For Research Use only

Handling

Format: Liquid

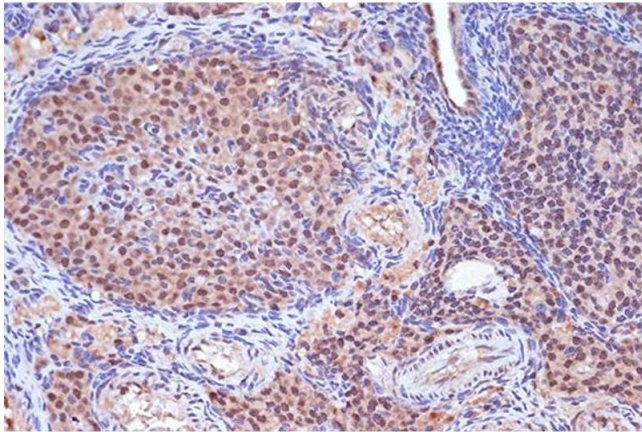
Buffer: PBS with 0.02 % sodium azide,0.05 % BSA,50 % glycerol, pH 7.3.

Preservative: Sodium azide

Precaution of Use: This product contains Sodium azide: a POISONOUS AND HAZARDOUS SUBSTANCE which should be handled by trained staff only.

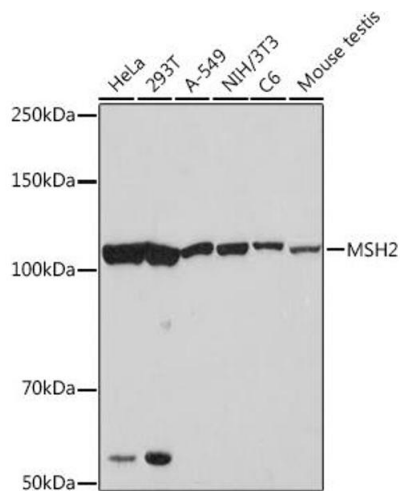
Storage: -20 °C

Storage Comment: Store at -20°C. Avoid freeze / thaw cycles.



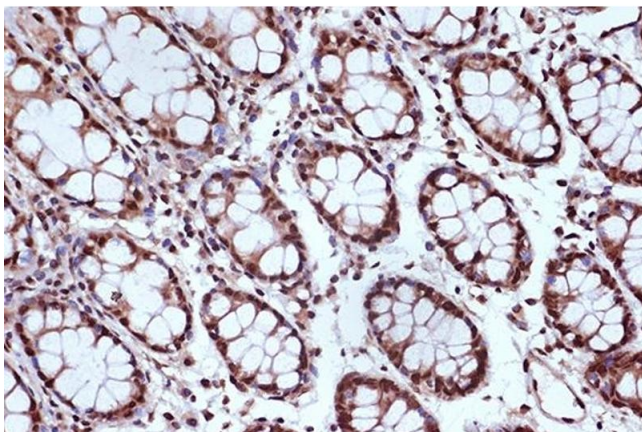
Immunohistochemistry

Image 1. Immunohistochemistry of paraffin-embedded rat ovary using MSH2 Rabbit mAb (ABIN7268547) at dilution of 1:100 (40x lens). Perform microwave antigen retrieval with 10 mM Tris/EDTA buffer pH 9.0 before commencing with IHC staining protocol.



Western Blotting

Image 2. Western blot analysis of extracts of various cell lines, using MSH2 Rabbit mAb (ABIN7268547) at 1:1000 dilution. Secondary antibody: HRP Goat Anti-Rabbit IgG (H+L) (ABIN1684268 and ABIN3020597) at 1:10000 dilution. Lysates/proteins: 25 µg per lane. Blocking buffer: 3 % nonfat dry milk in TBST. Detection: ECL Basic Kit (RM00020). Exposure time: 90s.



Immunohistochemistry

Image 3. Immunohistochemistry of paraffin-embedded human colon using MSH2 Rabbit mAb (ABIN7268547) at dilution of 1:100 (40x lens). Perform microwave antigen retrieval with 10 mM Tris/EDTA buffer pH 9.0 before commencing with IHC staining protocol.