



[Go to Product page](#)

Datasheet for ABIN7268585
anti-MRPS31 antibody

2 Images

Overview

Quantity:	100 µL
Target:	MRPS31
Reactivity:	Human
Host:	Rabbit
Clonality:	Monoclonal
Conjugate:	This MRPS31 antibody is un-conjugated
Application:	Western Blotting (WB)

Product Details

Purpose:	MRPS31 Rabbit mAb
Immunogen:	Recombinant protein of Human MRPS31.
Isotype:	IgG
Cross-Reactivity:	Human, Mouse, Rat
Characteristics:	Monoclonal Antibodies
Purification:	Affinity purification

Target Details

Target:	MRPS31
Alternative Name:	MRPS31 (MRPS31 Products)
Background:	Mammalian mitochondrial ribosomal proteins are encoded by nuclear genes and help in protein

Target Details

synthesis within the mitochondrion. Mitochondrial ribosomes (mitoribosomes) consist of a small 28S subunit and a large 39S subunit. They have an estimated 75 % protein to rRNA composition compared to prokaryotic ribosomes, where this ratio is reversed. Another difference between mammalian mitoribosomes and prokaryotic ribosomes is that the latter contain a 5S rRNA. Among different species, the proteins comprising the mitoribosome differ greatly in sequence, and sometimes in biochemical properties, which prevents easy recognition by sequence homology. The 28S subunit of the mammalian mitoribosome may play a crucial and characteristic role in translation initiation. This gene encodes a 28S subunit protein that has also been associated with type 1 diabetes, however, its relationship to the etiology of this disease remains to be clarified. Pseudogenes corresponding to this gene have been found on chromosomes 3 and 13.,MRPS31,IMOGN38,MRP-S31,S31mt,Epigenetics & Nuclear Signaling,RNA Binding,Endocrine & Metabolism,Mitochondrial metabolism,Mitochondrial markers,Mitochondrial translation,Immunology & Inflammation,MRPS31

Molecular Weight: 45kDa

Gene ID: 10240

UniProt: [Q92665](#)

Application Details

Application Notes: WB,1:500 - 1:2000

Restrictions: For Research Use only

Handling

Format: Liquid

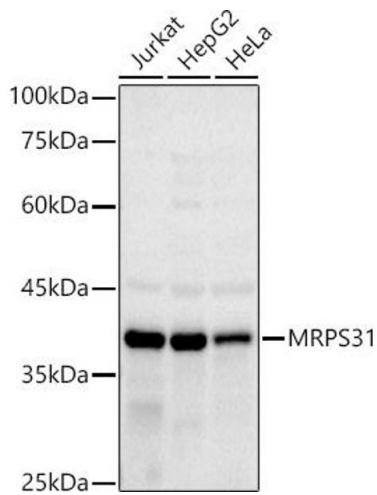
Buffer: PBS with 0.02 % sodium azide,0.05 % BSA,50 % glycerol, pH 7.3.

Preservative: Sodium azide

Precaution of Use: This product contains Sodium azide: a POISONOUS AND HAZARDOUS SUBSTANCE which should be handled by trained staff only.

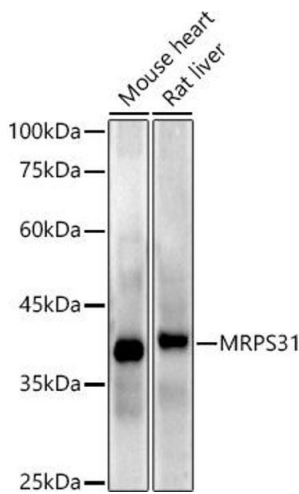
Storage: -20 °C

Storage Comment: Store at -20°C. Avoid freeze / thaw cycles.



Western Blotting

Image 1. Western blot analysis of extracts of various cell lines, using MRPS31 antibody (ABIN7268585) at 1:1000 dilution. Secondary antibody: HRP Goat Anti-Rabbit IgG (H+L) (ABIN1684268 and ABIN3020597) at 1:10000 dilution. Lysates/proteins: 25 µg per lane. Blocking buffer: 3 % nonfat dry milk in TBST. Detection: ECL Basic Kit (RM00020). Exposure time: 180s.



Western Blotting

Image 2. Western blot analysis of extracts of various cell lines, using MRPS31 antibody (ABIN7268585) at 1:1000 dilution. Secondary antibody: HRP Goat Anti-Rabbit IgG (H+L) (ABIN1684268 and ABIN3020597) at 1:10000 dilution. Lysates/proteins: 25 µg per lane. Blocking buffer: 3 % nonfat dry milk in TBST. Detection: ECL Enhanced Kit (RM00021). Exposure time: 180s.