



[Go to Product page](#)

Datasheet for ABIN7268588
anti-MRPS7 antibody (AA 110-190)

4 Images

Overview

Quantity:	100 µL
Target:	MRPS7
Binding Specificity:	AA 110-190
Reactivity:	Human
Host:	Rabbit
Clonality:	Polyclonal
Conjugate:	This MRPS7 antibody is un-conjugated
Application:	Western Blotting (WB), Immunofluorescence (IF)

Product Details

Purpose:	MRPS7 Rabbit pAb
Immunogen:	Recombinant fusion protein containing a sequence corresponding to amino acids 110-190 of human MRPS7 (NP_057055.2).
Sequence:	LMIQTLEAVK RKQFEKYHAA SAEEQATIER NPYTIFHQAL KNCEPMIGLV PILKGGRFYQ VPVPLPDRRR RFLAMKWMIT E
Isotype:	IgG
Cross-Reactivity:	Human, Mouse, Rat
Characteristics:	Polyclonal Antibodies
Purification:	Affinity purification

Target Details

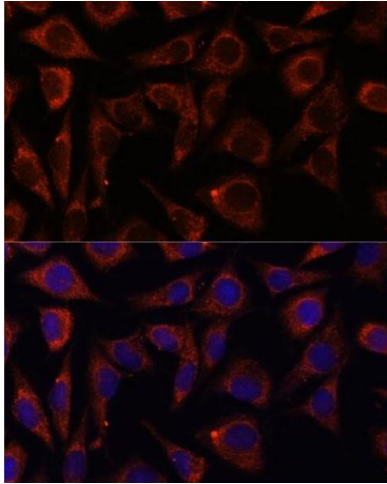
Target:	MRPS7
Alternative Name:	MRPS7 (MRPS7 Products)
Background:	<p>Mammalian mitochondrial ribosomal proteins are encoded by nuclear genes and help in protein synthesis within the mitochondrion. Mitochondrial ribosomes (mitoribosomes) consist of a small 28S subunit and a large 39S subunit. They have an estimated 75% protein to rRNA composition compared to prokaryotic ribosomes, where this ratio is reversed. Another difference between mammalian mitoribosomes and prokaryotic ribosomes is that the latter contain a 5S rRNA. Among different species, the proteins comprising the mitoribosome differ greatly in sequence, and sometimes in biochemical properties, which prevents easy recognition by sequence homology. This gene encodes a 28S subunit protein. In the prokaryotic ribosome, the comparable protein is thought to play an essential role in organizing the 3' domain of the 16 S rRNA in the vicinity of the P- and A-sites. Pseudogenes corresponding to this gene are found on chromosomes 8p and 12p.,MRPS7;MRP-S;MRP-S7;RP-S7;RPMS7;S7mt;bMRP27a,Epigenetics & Nuclear Signaling,RNA Binding,Endocrine & Metabolism,Mitochondrial metabolism,Mitochondrial markers,Mitochondrial translation,MRPS7</p>
Molecular Weight:	28kDa
Gene ID:	51081
UniProt:	Q9Y2R9

Application Details

Application Notes:	WB,1:500 - 1:2000,IF,1:50 - 1:200
Restrictions:	For Research Use only

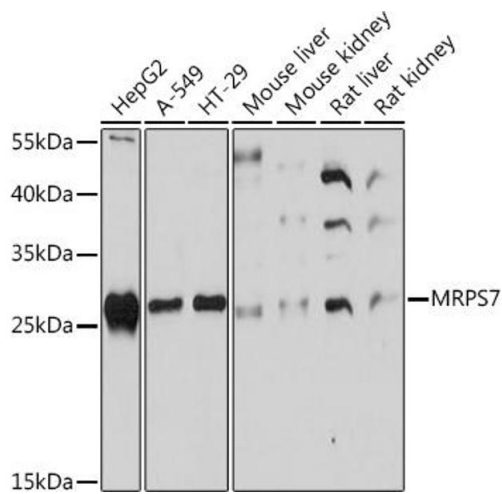
Handling

Format:	Liquid
Buffer:	PBS with 0.02 % sodium azide,50 % glycerol, pH 7.3.
Preservative:	Sodium azide
Precaution of Use:	This product contains Sodium azide: a POISONOUS AND HAZARDOUS SUBSTANCE which should be handled by trained staff only.
Storage:	-20 °C
Storage Comment:	Store at -20°C. Avoid freeze / thaw cycles.



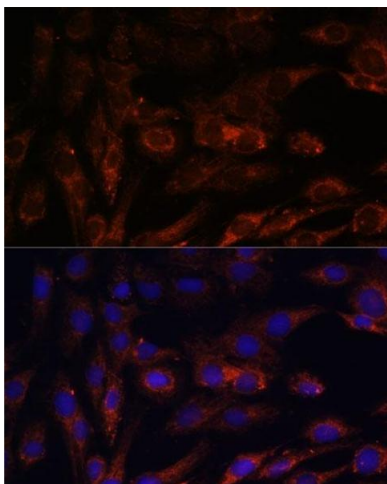
Immunofluorescence

Image 1. Immunofluorescence analysis of L929 cells using MRPS7 antibody (ABIN7268588) at dilution of 1:100. Blue: DAPI for nuclear staining.



Western Blotting

Image 2. Western blot analysis of extracts of various cell lines, using MRPS7 Rabbit pAb (ABIN7268588) at 1:1000 dilution. Secondary antibody: HRP Goat Anti-Rabbit IgG (H+L) (ABIN1684268 and ABIN3020597) at 1:10000 dilution. Lysates/proteins: 25 µg per lane. Blocking buffer: 3 % nonfat dry milk in TBST. Detection: ECL Basic Kit (RM00020). Exposure time: 90s.



Immunofluorescence

Image 3. Immunofluorescence analysis of C6 cells using MRPS7 antibody (ABIN7268588) at dilution of 1:100. Blue: DAPI for nuclear staining.

Please check the [product details page](#) for more images. Overall 4 images are available for ABIN7268588.