



[Go to Product page](#)

Datasheet for ABIN7268595
anti-Cytochrome b antibody

4 Images

Overview

Quantity:	100 µL
Target:	Cytochrome b (MT-CYB)
Reactivity:	Human
Host:	Rabbit
Clonality:	Polyclonal
Conjugate:	This Cytochrome b antibody is un-conjugated
Application:	Western Blotting (WB), Immunohistochemistry (IHC), Immunofluorescence (IF)

Product Details

Purpose:	MT-CYB Rabbit pAb
Immunogen:	Recombinant protein of human MT-CYB.
Isotype:	IgG
Cross-Reactivity:	Human, Mouse, Rat
Characteristics:	Polyclonal Antibodies
Purification:	Affinity purification

Target Details

Target:	Cytochrome b (MT-CYB)
Alternative Name:	MT-CYB (MT-CYB Products)
Background:	Component of the ubiquinol-cytochrome c reductase complex (complex III or cytochrome b-c1)

Target Details

complex that is part of the mitochondrial respiratory chain. The b-c1 complex mediates electron transfer from ubiquinol to cytochrome c. Contributes to the generation of a proton gradient across the mitochondrial membrane that is then used for ATP synthesis.,MTCYB,MT-CYB,Signal Transduction,Endocrine & Metabolism,Mitochondrial metabolism,Cytochromes,Neuroscience,Neurodegenerative Diseases,MT-CYB

Molecular Weight: 43kDa

Gene ID: 4519

UniProt: [P00156](#)

Pathways: [Proton Transport](#)

Application Details

Application Notes: WB,1:500 - 1:2000,IHC,1:50 - 1:200,IF,1:50 - 1:100

Restrictions: For Research Use only

Handling

Format: Liquid

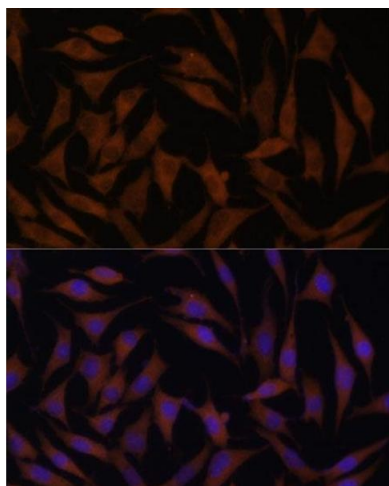
Buffer: PBS with 0.02 % sodium azide,50 % glycerol, pH 7.3.

Preservative: Sodium azide

Precaution of Use: This product contains Sodium azide: a POISONOUS AND HAZARDOUS SUBSTANCE which should be handled by trained staff only.

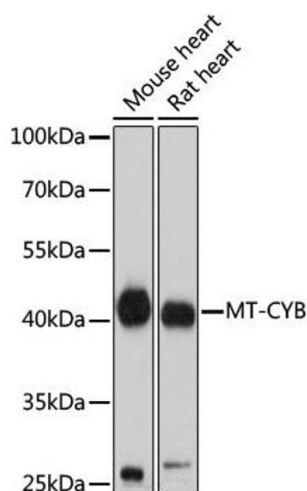
Storage: -20 °C

Storage Comment: Store at -20°C. Avoid freeze / thaw cycles.



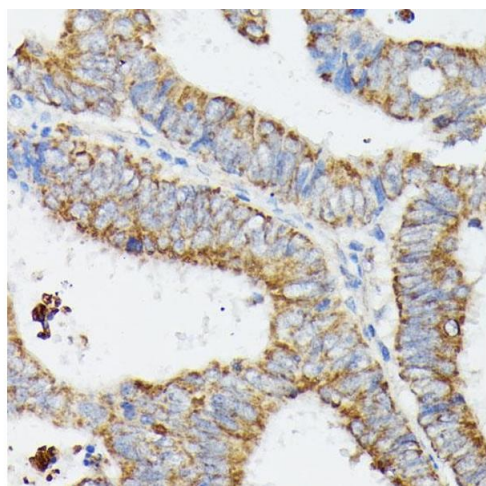
Immunofluorescence

Image 1. Immunofluorescence analysis of L929 cells using MT-CYB Polyclonal Antibody (ABIN7268595) at dilution of 1:100 (40x lens). Blue: DAPI for nuclear staining.



Western Blotting

Image 2. Western blot analysis of extracts of various cell lines, using MT-CYB antibody (ABIN7268595) at 1:1000 dilution. Secondary antibody: HRP Goat Anti-Rabbit IgG (H+L) (ABIN1684268 and ABIN3020597) at 1:10000 dilution. Lysates/proteins: 25 µg per lane. Blocking buffer: 3 % nonfat dry milk in TBST. Detection: ECL Basic Kit (RM00020). Exposure time: 10s.



Immunohistochemistry

Image 3. Immunohistochemistry of paraffin-embedded human colon carcinoma using MT-CYB antibody (ABIN7268595) at dilution of 1:100 (40x lens). Perform microwave antigen retrieval with 10 mM PBS buffer pH 7.2 before commencing with IHC staining protocol.

Please check the [product details page](#) for more images. Overall 4 images are available for ABIN7268595.