

Datasheet for ABIN7268616
anti-MAPK14 antibody (C-Term)

5 Images

[Go to Product page](#)

Overview

Quantity:	100 µL
Target:	MAPK14
Binding Specificity:	C-Term
Reactivity:	Human
Host:	Rabbit
Clonality:	Polyclonal
Conjugate:	This MAPK14 antibody is un-conjugated
Application:	Western Blotting (WB), Immunohistochemistry (IHC), Immunofluorescence (IF), Immunoprecipitation (IP)

Product Details

Purpose:	p38 MAPK Rabbit pAb
Immunogen:	A synthetic peptide corresponding to a sequence within amino acids 300 to the C-terminus of human p38 MAPK (NP_620581.1).
Sequence:	AQALAHAYFA QYHDPDDEPV ADPYDQSFES RDLLIDEWKS LTYDEVISFV PPPLDQEEME S
Isotype:	IgG
Cross-Reactivity:	Human, Mouse, Rat
Characteristics:	Polyclonal Antibodies
Purification:	Affinity purification

Target Details

Target: MAPK14

Alternative Name: MAPK14 ([MAPK14 Products](#))

Background: The protein encoded by this gene is a member of the MAP kinase family. MAP kinases act as an integration point for multiple biochemical signals, and are involved in a wide variety of cellular processes such as proliferation, differentiation, transcription regulation and development. This kinase is activated by various environmental stresses and proinflammatory cytokines. The activation requires its phosphorylation by MAP kinase kinases (MKKs), or its autophosphorylation triggered by the interaction of MAP3K7IP1/TAB1 protein with this kinase. The substrates of this kinase include transcription regulator ATF2, MEF2C, and MAX, cell cycle regulator CDC25B, and tumor suppressor p53, which suggest the roles of this kinase in stress related transcription and cell cycle regulation, as well as in genotoxic stress response. Four alternatively spliced transcript variants of this gene encoding distinct isoforms have been reported. MAPK14, CSBP, CSBP1, CSBP2, CSPB1, EXIP, Mxi2, PRKM14, PRKM15, RK, SAPK2A, p38, p38ALPHA, p38 MAPK, Epigenetics & Nuclear Signaling, Translation Control, Regulation of eIF4 and p70 S6 Kinase, Signal Transduction, Kinase, Serine/threonine kinases, Phospholipase Signaling Pathway, ErbB-HER Signaling Pathway, MAPK-P38 Signaling Pathway, Cell Biology & Developmental Biology, TGF-b-Smad Signaling Pathway, Immunology & Inflammation, B Cell Receptor Signaling Pathway, T Cell Receptor Signaling Pathway, NF-kB Signaling Pathway, Toll-like Receptor Signaling Pathway, Cell Intrinsic Innate Immunity Signaling Pathway, TLR Signaling, Neuroscience, Neurodegenerative Diseases, Cardiovascular, Angiogenesis, MAPK14

Molecular Weight: 29kDa/34kDa/35kDa/41kDa

Gene ID: 1432

UniProt: [Q16539](#)

Pathways: [MAPK Signaling](#), [Neurotrophin Signaling Pathway](#), [Activation of Innate immune Response](#), [Cellular Response to Molecule of Bacterial Origin](#), [Regulation of Muscle Cell Differentiation](#), [Regulation of Cell Size](#), [Hepatitis C](#), [Toll-Like Receptors Cascades](#), [Autophagy](#), [Thromboxane A2 Receptor Signaling](#), [BCR Signaling](#), [S100 Proteins](#)

Application Details

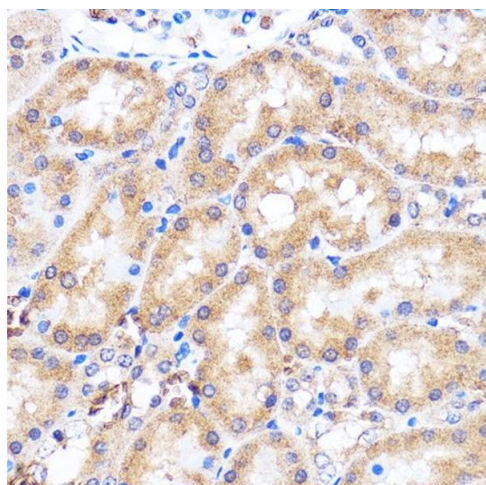
Application Notes: WB, 1:500 - 1:1000, IHC, 1:50 - 1:200, IF, 1:50 - 1:100, IP, 1:50 - 1:100

Restrictions: For Research Use only

Handling

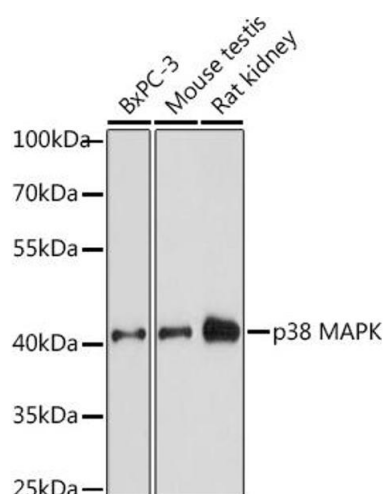
Format:	Liquid
Buffer:	PBS with 0.02 % sodium azide, 50 % glycerol, pH 7.3.
Preservative:	Sodium azide
Precaution of Use:	This product contains Sodium azide: a POISONOUS AND HAZARDOUS SUBSTANCE which should be handled by trained staff only.
Storage:	-20 °C
Storage Comment:	Store at -20°C. Avoid freeze / thaw cycles.

Images



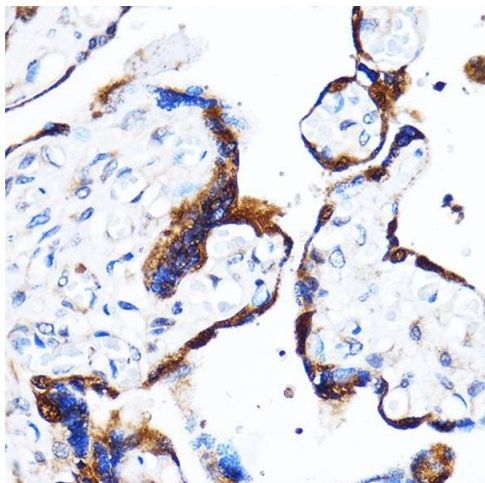
Immunohistochemistry

Image 1. Immunohistochemistry of paraffin-embedded Rat kidney using p38 MAPK Rabbit pAb (ABIN7268616) at dilution of 1:100 (40x lens). Perform microwave antigen retrieval with 10 mM PBS buffer pH 7.2 before commencing with IHC staining protocol.



Western Blotting

Image 2. Western blot analysis of extracts of various cell lines, using p38 MAPK antibody (ABIN7268616) at 1:1000 dilution. Secondary antibody: HRP Goat Anti-Rabbit IgG (H+L) (ABIN1684268 and ABIN3020597) at 1:10000 dilution. Lysates/proteins: 25 µg per lane. Blocking buffer: 3 % nonfat dry milk in TBST. Detection: ECL Enhanced Kit (RM00021). Exposure time: 30s.



Immunohistochemistry

Image 3. Immunohistochemistry of paraffin-embedded Human placenta using p38 MAPK Rabbit pAb (ABIN7268616) at dilution of 1:100 (40x lens). Perform microwave antigen retrieval with 10 mM PBS buffer pH 7.2 before commencing with IHC staining protocol.

Please check the [product details page](#) for more images. Overall 5 images are available for ABIN7268616.