

Datasheet for ABIN7268633

**anti-MEK1 antibody**

## 4 Images

[Go to Product page](#)

## Overview

Quantity:	100 µL
Target:	MEK1 (MAP2K1)
Reactivity:	Human
Host:	Rabbit
Clonality:	Monoclonal
Conjugate:	This MEK1 antibody is un-conjugated
Application:	Western Blotting (WB), Immunohistochemistry (IHC), Immunofluorescence (IF), Immunoprecipitation (IP)

## Product Details

Purpose:	MEK1 Rabbit mAb
Immunogen:	A synthesized peptide derived from human MEK1 .
Isotype:	IgG
Cross-Reactivity:	Human, Mouse, Rat
Characteristics:	Monoclonal Antibodies
Purification:	Affinity purification

## Target Details

Target:	MEK1 (MAP2K1)
Alternative Name:	MAP2K1 ( <a href="#">MAP2K1 Products</a> )

## Target Details

Background:	<p>The protein encoded by this gene is a member of the dual specificity protein kinase family, which acts as a mitogen-activated protein (MAP) kinase kinase. MAP kinases, also known as extracellular signal-regulated kinases (ERKs), act as an integration point for multiple biochemical signals. This protein kinase lies upstream of MAP kinases and stimulates the enzymatic activity of MAP kinases upon wide variety of extra- and intracellular signals. As an essential component of MAP kinase signal transduction pathway, this kinase is involved in many cellular processes such as proliferation, differentiation, transcription regulation and development. [provided by RefSeq, Jul 2008],CFC3,MAPKK1,MEK1,MKK1,PRKMK1,MAP2K1,Angiogenesis,B Cell Receptor Signaling Pathway,Cardiovascular,Cell Biology &amp; Developmental Biology,Cytoskeleton,Cytoskeleton_Actins,Endocrine &amp; Metabolism,ErbB-HER Signaling Pathway,ESC Pluripotency and Differentiation,G protein signaling,G protein signaling_G-Protein-Coupled Receptors Signaling to MAPK/Erk,IL-6 Receptor Signaling Pathway,Immunology &amp; Inflammation,Insulin Receptor Signaling Pathway,Kinase,Kinase_Tyrosine kinases,MAPK-Erk Signaling Pathway,Neurodegenerative Diseases,Neuroscience,Protein phosphorylation,Signal Transduction,T Cell Receptor Signaling Pathway,Warburg Effect,MAP2K1</p>
Molecular Weight:	45kDa
Gene ID:	5604
UniProt:	<a href="#">Q02750</a>
Pathways:	<a href="#">MAPK Signaling</a> , <a href="#">RTK Signaling</a> , <a href="#">Interferon-gamma Pathway</a> , <a href="#">Fc-epsilon Receptor Signaling Pathway</a> , <a href="#">Neurotrophin Signaling Pathway</a> , <a href="#">Activation of Innate immune Response</a> , <a href="#">Toll-Like Receptors Cascades</a> , <a href="#">Autophagy</a> , <a href="#">Signaling of Hepatocyte Growth Factor Receptor</a> , <a href="#">BCR Signaling</a>

## Application Details

Application Notes:	WB,1:500 - 1:2000,IHC,1:50 - 1:200,IF,1:50 - 1:200,IP,1:50 - 1:200
Restrictions:	For Research Use only

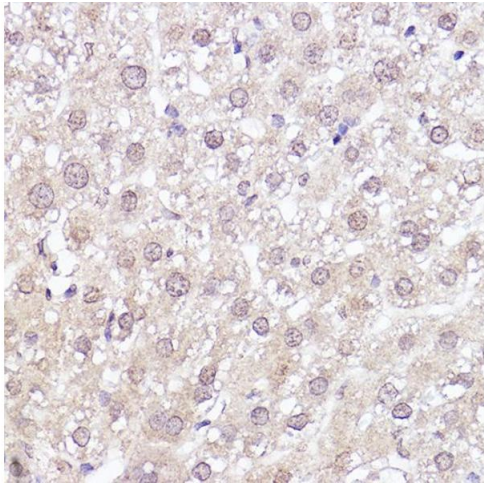
## Handling

Format:	Liquid
Buffer:	PBS with 0.02 % sodium azide,0.05 % BSA,50 % glycerol, pH 7.3.
Preservative:	Sodium azide

## Handling

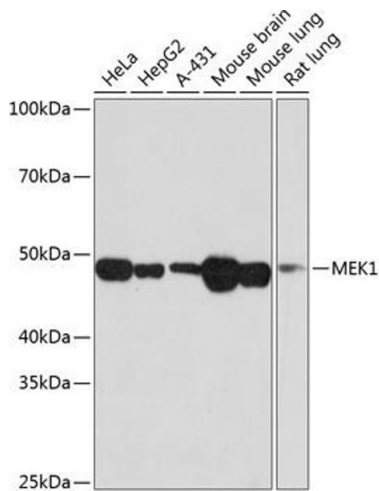
Precaution of Use:	This product contains Sodium azide: a POISONOUS AND HAZARDOUS SUBSTANCE which should be handled by trained staff only.
Storage:	-20 °C
Storage Comment:	Store at -20°C. Avoid freeze / thaw cycles.

## Images



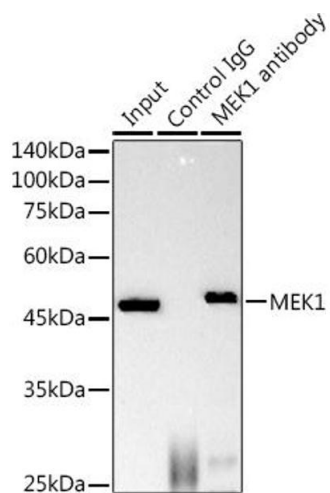
### Immunohistochemistry

**Image 1.** Immunohistochemistry of paraffin-embedded rat liver using MEK1 Rabbit mAb (ABIN7268633) at dilution of 1:100 (40x lens). Perform high pressure antigen retrieval with 10 mM citrate buffer pH 6.0 before commencing with IHC staining protocol.



### Western Blotting

**Image 2.** Western blot analysis of extracts of various cell lines, using MEK1 antibody (ABIN7268633) at 1:1000 dilution. Secondary antibody: HRP Goat Anti-Rabbit IgG (H+L) (ABIN1684268 and ABIN3020597) at 1:10000 dilution. Lysates/proteins: 25 µg per lane. Blocking buffer: 3 % nonfat dry milk in TBST. Detection: ECL Basic Kit (RM00020). Exposure time: 1 min.



### Immunoprecipitation

**Image 3.** Immunoprecipitation analysis of 600 µg extracts of Mouse brain using 3 µg MEK1 antibody (ABIN7268633). Western blot was performed from the immunoprecipitate using MEK1 antibody (ABIN7268633) at a dilution of 1:1000.

Please check the [product details page](#) for more images. Overall 4 images are available for ABIN7268633.