

Datasheet for ABIN7268640
anti-MEK2 antibody (AA 1-100)[Go to Product page](#)

4 Images

Overview

Quantity:	100 µL
Target:	MEK2 (MAP2K2)
Binding Specificity:	AA 1-100
Reactivity:	Human
Host:	Rabbit
Clonality:	Polyclonal
Conjugate:	This MEK2 antibody is un-conjugated
Application:	Western Blotting (WB), Immunohistochemistry (IHC), Immunofluorescence (IF)

Product Details

Purpose:	[KO Validated] MEK2 Rabbit pAb
Immunogen:	A synthetic peptide corresponding to a sequence within amino acids 1-100 of human MEK2 (NP_109587.1).
Sequence:	MLARRKPVLP ALTINPTIAE GPSPTSEGAS EANLVDLQKK LEELELDEQQ KKRLEAFLTQ KAKVGELKDD DFERISELGA GNGGVVTKVQ HRPSGLIMAR
Isotype:	IgG
Cross-Reactivity:	Human, Mouse, Rat
Characteristics:	Polyclonal Antibodies
Purification:	Affinity purification
Grade:	KO Validated

Target Details

Target:	MEK2 (MAP2K2)
Alternative Name:	MAP2K2 (MAP2K2 Products)
Background:	<p>The protein encoded by this gene is a dual specificity protein kinase that belongs to the MAP kinase kinase family. This kinase is known to play a critical role in mitogen growth factor signal transduction. It phosphorylates and thus activates MAPK1/ERK2 and MAPK2/ERK3. The activation of this kinase itself is dependent on the Ser/Thr phosphorylation by MAP kinase kinase kinases. Mutations in this gene cause cardiofaciocutaneous syndrome (CFC syndrome), a disease characterized by heart defects, mental retardation, and distinctive facial features similar to those found in Noonan syndrome. The inhibition or degradation of this kinase is also found to be involved in the pathogenesis of Yersinia and anthrax. A pseudogene, which is located on chromosome 7, has been identified for this</p> <p>gene.,CFC4,MAPKK2,MEK2,MKK2,PRKMK2,MAP2K2,Cancer,Signal Transduction,G protein signaling,G2/M DNA Damage Checkpoint,Kinase,Serine/threonine kinases,Tyrosine kinases,ErbB-HER Signaling Pathway,MAPK-Erk Signaling Pathway,Cell Biology & Developmental Biology,Cytoskeleton,Actins,ESC Pluripotency and Differentiation,Endocrine & Metabolism,Insulin Receptor Signaling Pathway,Warburg Effect,Immunology & Inflammation,B Cell Receptor Signaling Pathway,T Cell Receptor Signaling Pathway,IL-6 Receptor Signaling Pathway,Neuroscience,Neurodegenerative Diseases,Cardiovascular,Angiogenesis,MAP2K2</p>
Molecular Weight:	44kDa
Gene ID:	5605
UniProt:	P36507
Pathways:	MAPK Signaling , RTK Signaling , Fc-epsilon Receptor Signaling Pathway , Neurotrophin Signaling Pathway , Activation of Innate immune Response , Toll-Like Receptors Cascades , Signaling of Hepatocyte Growth Factor Receptor , BCR Signaling

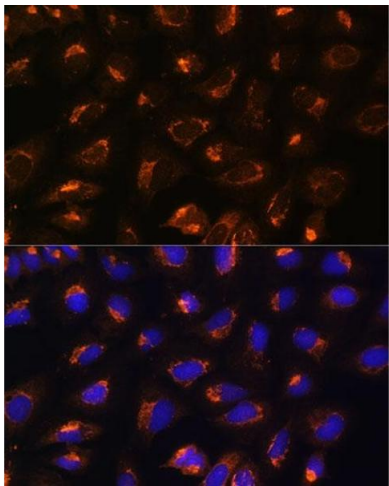
Application Details

Application Notes:	WB,1:500 - 1:2000,IHC,1:100 - 1:200,IF,1:50 - 1:200
Restrictions:	For Research Use only
Handling	
Format:	Liquid
Buffer:	PBS with 0.02 % sodium azide,50 % glycerol, pH 7.3.

Handling

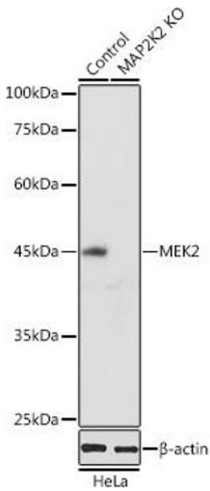
Preservative:	Sodium azide
Precaution of Use:	This product contains Sodium azide: a POISONOUS AND HAZARDOUS SUBSTANCE which should be handled by trained staff only.
Storage:	-20 °C
Storage Comment:	Store at -20°C. Avoid freeze / thaw cycles.

Images



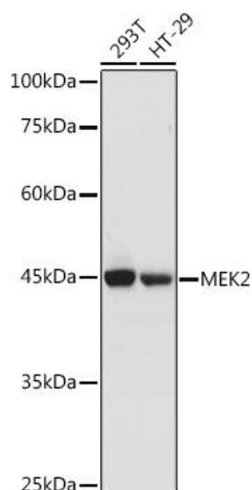
Immunofluorescence

Image 1. Immunofluorescence analysis of U2OS cells using MEK2 antibody (ABIN7268640) at dilution of 1:100. Blue: DAPI for nuclear staining.



Western Blotting

Image 2. Western blot analysis of extracts of HeLa cells, using MEK2 antibody (ABIN7268640) at 1:1000 dilution. Secondary antibody: HRP Goat Anti-Rabbit IgG (H+L) (ABIN1684268 and ABIN3020597) at 1:10000 dilution. Lysates/proteins: 25 µg per lane. Blocking buffer: 3 % nonfat dry milk in TBST. Detection: ECL Basic Kit (RM00020). Exposure time: 90s.



Western Blotting

Image 3. Western blot analysis of extracts of various cell lines, using MEK2 antibody (ABIN7268640) at 1:1000 dilution. Secondary antibody: HRP Goat Anti-Rabbit IgG (H+L) (ABIN1684268 and ABIN3020597) at 1:10000 dilution. Lysates/proteins: 25 µg per lane. Blocking buffer: 3 % nonfat dry milk in TBST. Detection: ECL Basic Kit (RM00020). Exposure time: 90s.

Please check the [product details page](#) for more images. Overall 4 images are available for ABIN7268640.