

Datasheet for ABIN7268641  
**anti-MAP2K4 antibody (AA 300-399)**



[Go to Product page](#)

2 Images

## Overview

Quantity:	100 µL
Target:	MAP2K4
Binding Specificity:	AA 300-399
Reactivity:	Human
Host:	Rabbit
Clonality:	Polyclonal
Conjugate:	This MAP2K4 antibody is un-conjugated
Application:	Western Blotting (WB), Immunohistochemistry (IHC), Immunofluorescence (IF)

## Product Details

Purpose:	[KO Validated] MAP2K4 Rabbit pAb
Immunogen:	Recombinant fusion protein containing a sequence corresponding to amino acids 300-399 of human MAP2K4 (NP_003001.1).
Sequence:	LATGRFPYPK WNSVFDQLTQ VVKGDPPQLS NSEEREFSPS FINFVNLCLT KDESKRPKYK ELLKHPFILM YEERAVEVAC YVCKILDQMP ATPSSPMYVD
Isotype:	IgG
Cross-Reactivity:	Human, Mouse, Rat
Characteristics:	Polyclonal Antibodies
Purification:	Affinity purification
Grade:	KO Validated

## Target Details

---

Target: MAP2K4

Alternative Name: MAP2K4 ([MAP2K4 Products](#))

Background: This gene encodes a member of the mitogen-activated protein kinase (MAPK) family. Members of this family act as an integration point for multiple biochemical signals and are involved in a wide variety of cellular processes such as proliferation, differentiation, transcription regulation, and development. They form a three-tiered signaling module composed of MAPKKKs, MAPKKs, and MAPKs. This protein is phosphorylated at serine and threonine residues by MAPKKKs and subsequently phosphorylates downstream MAPK targets at threonine and tyrosine residues. A similar protein in mouse has been reported to play a role in liver organogenesis. A pseudogene of this gene is located on the long arm of chromosome X. Alternative splicing results in multiple transcript variants.,MAP2K4,JNKK,JNKK1,MAPKK4,MEK4,MKK4,PRKMK4,SAPKK-1,SAPKK1,SEK1,SERK1,SKK1,Signal Transduction,G protein signaling,G2/M DNA Damage Checkpoint,Kinase,Tyrosine kinases,ErbB-HER Signaling Pathway,MAPK-JNK Signaling Pathway,MAPK-P38 Signaling Pathway,Cell Biology & Developmental Biology,Cytoskeleton,Actins,TGF-b-Smad Signaling Pathway,Immunology & Inflammation,B Cell Receptor Signaling Pathway,T Cell Receptor Signaling Pathway,IL-6 Receptor Signaling Pathway,Toll-like Receptor Signaling Pathway,Neuroscience,Neurodegenerative Diseases,Dopamine Signaling in Parkinson's Disease,MAP2K4

Molecular Weight: 44kDa/45kDa

Gene ID: 6416

UniProt: [P45985](#)

Pathways: [MAPK Signaling](#), [TLR Signaling](#), [Fc-epsilon Receptor Signaling Pathway](#), [Activation of Innate immune Response](#), [Toll-Like Receptors Cascades](#), [BCR Signaling](#)

## Application Details

---

Application Notes: WB,1:500 - 1:2000,IHC,1:50 - 1:100,IF,1:50 - 1:100

Restrictions: For Research Use only

## Handling

---

Format: Liquid

Buffer: PBS with 0.02 % sodium azide,50 % glycerol, pH 7.3.

Preservative: Sodium azide

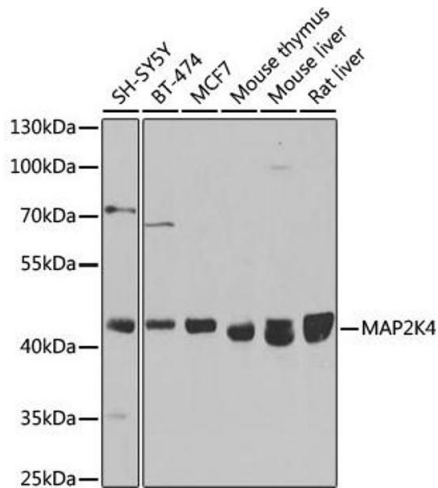
## Handling

Precaution of Use: This product contains Sodium azide: a POISONOUS AND HAZARDOUS SUBSTANCE which should be handled by trained staff only.

Storage: -20 °C

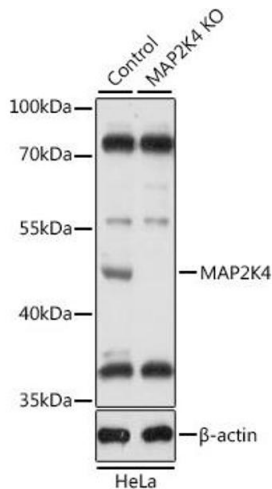
Storage Comment: Store at -20°C. Avoid freeze / thaw cycles.

## Images



### Western Blotting

**Image 1.** Western blot analysis of extracts of various cell lines, using MK4 antibody (ABIN7268641) at 1:1000 dilution. Secondary antibody: HRP Goat Anti-Rabbit IgG (H+L) (ABIN1684268 and ABIN3020597) at 1:10000 dilution. Lysates/proteins: 25 µg per lane. Blocking buffer: 3% nonfat dry milk in TBST. Detection: ECL Basic Kit (RM00020). Exposure time: 90s.



### Western Blotting

**Image 2.** Western blot analysis of extracts from normal (control) and MK4 knockout (KO) HeLa cells, using MK4 antibody (ABIN7268641) at 1:1000 dilution. Secondary antibody: HRP Goat Anti-Rabbit IgG (H+L) (ABIN1684268 and ABIN3020597) at 1:10000 dilution. Lysates/proteins: 25 µg per lane. Blocking buffer: 3% nonfat dry milk in TBST. Detection: ECL Basic Kit (RM00020). Exposure time: 5s.