

Datasheet for ABIN7268643

anti-MAP2K6 antibody**2** Images[Go to Product page](#)

Overview

Quantity:	100 µL
Target:	MAP2K6
Reactivity:	Human
Host:	Rabbit
Clonality:	Monoclonal
Conjugate:	This MAP2K6 antibody is un-conjugated
Application:	Western Blotting (WB)

Product Details

Purpose:	MEK3/MEK6 Rabbit mAb
Immunogen:	A synthesized peptide derived from human MEK3/MEK6
Isotype:	IgG
Cross-Reactivity:	Human, Mouse, Rat
Characteristics:	Monoclonal Antibodies
Purification:	Affinity purification

Target Details

Target:	MAP2K6
Alternative Name:	MAP2K3/MAP2K6 (MAP2K6 Products)
Background:	The protein encoded by this gene is a dual specificity protein kinase that belongs to the MAP

Target Details

kinase kinase family. This kinase is activated by mitogenic and environmental stress, and participates in the MAP kinase-mediated signaling cascade. It phosphorylates and thus activates MAPK14/p38-MAPK. This kinase can be activated by insulin, and is necessary for the expression of glucose transporter. Expression of RAS oncogene is found to result in the accumulation of the active form of this kinase, which thus leads to the constitutive activation of MAPK14, and confers oncogenic transformation of primary cells. The inhibition of this kinase is involved in the pathogenesis of Yersinia pseudotuberculosis. Multiple alternatively spliced transcript variants that encode distinct isoforms have been reported for this gene. [provided by RefSeq, Jul 2008],MAPKK3, MEK3, MKK3, PRKMK3, SAPKK-2, SAPKK2,Protein phosphorylation,MAP2K3/MAP2K6

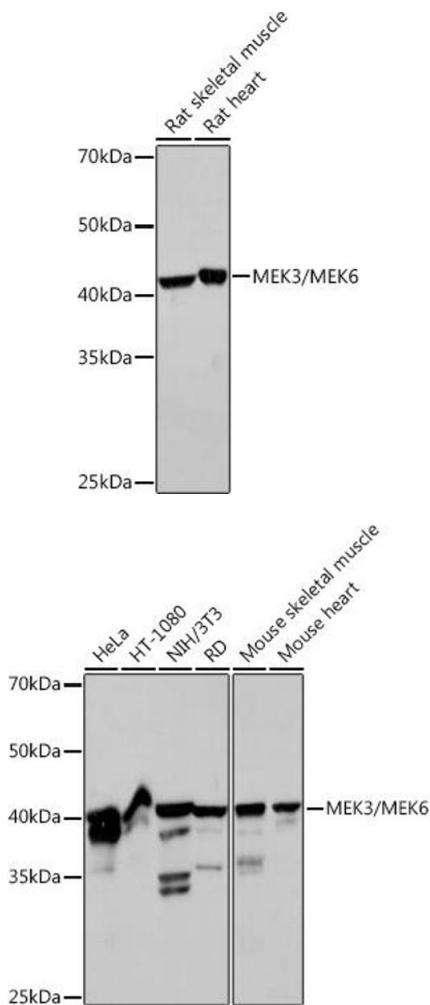
Molecular Weight:	39,37kDa
Gene ID:	5606, 5608
UniProt:	P46734 , P52564
Pathways:	MAPK Signaling , TLR Signaling , Activation of Innate immune Response , Regulation of Muscle Cell Differentiation , Toll-Like Receptors Cascades

Application Details

Application Notes:	WB,1:500 - 1:2000
Restrictions:	For Research Use only

Handling

Format:	Liquid
Buffer:	PBS with 0.02 % sodium azide,0.05 % BSA,50 % glycerol, pH 7.3.
Preservative:	Sodium azide
Precaution of Use:	This product contains Sodium azide: a POISONOUS AND HAZARDOUS SUBSTANCE which should be handled by trained staff only.
Storage:	-20 °C
Storage Comment:	Store at -20°C. Avoid freeze / thaw cycles.



Western Blotting

Image 1. Western blot analysis of extracts of various cell lines, using MEK3/MEK6 Rabbit mAb (ABIN7268643) at 1:1000 dilution. Secondary antibody: HRP Goat Anti-Rabbit IgG (H+L) (ABIN1684268 and ABIN3020597) at 1:10000 dilution. Lysates/proteins: 25 µg per lane. Blocking buffer: 3 % nonfat dry milk in TBST. Detection: ECL Basic Kit (RM00020). Exposure time: 30s.

Western Blotting

Image 2. Western blot analysis of extracts of various cell lines, using MEK3/MEK6 Rabbit mAb (ABIN7268643) at 1:1000 dilution. Secondary antibody: HRP Goat Anti-Rabbit IgG (H+L) (ABIN1684268 and ABIN3020597) at 1:10000 dilution. Lysates/proteins: 25 µg per lane. Blocking buffer: 3 % nonfat dry milk in TBST. Detection: ECL Basic Kit (RM00020). Exposure time: 10s.