

Datasheet for ABIN7268645
anti-MAP2K7 antibody



[Go to Product page](#)

2 Images

Overview

Quantity:	100 µL
Target:	MAP2K7
Reactivity:	Human
Host:	Rabbit
Clonality:	Monoclonal
Conjugate:	This MAP2K7 antibody is un-conjugated
Application:	Western Blotting (WB)

Product Details

Purpose:	MEK7 Rabbit mAb
Immunogen:	A synthesized peptide derived from human MEK7
Isotype:	IgG
Cross-Reactivity:	Human, Mouse, Rat
Characteristics:	Monoclonal Antibodies
Purification:	Affinity purification

Target Details

Target:	MAP2K7
Alternative Name:	MAP2K7 (MAP2K7 Products)
Background:	The protein encoded by this gene is a dual specificity protein kinase that belongs to the MAP

Target Details

kinase kinase family. This kinase specifically activates MAPK8/JNK1 and MAPK9/JNK2, and this kinase itself is phosphorylated and activated by MAP kinase kinase kinases including MAP3K1/MEKK1, MAP3K2/MEKK2, MAP3K3/MEKK5, and MAP4K2/GCK. This kinase is involved in the signal transduction mediating the cell responses to proinflammatory cytokines, and environmental stresses. Alternative splicing results in multiple transcript variants. [provided by RefSeq, Jul 2014], JNKK2, MAPKK7, MEK, MEK 7, MKK7, PRKMK7, SAPKK-4, SAPKK4, B Cell Receptor Signaling Pathway, Cell Biology & Developmental Biology, Cell Intrinsic Innate Immunity Signaling Pathway, Cytoskeleton, Cytoskeleton_Actins, Death Receptor Signaling Pathway, Endocrine & Metabolism, ErbB-HER Signaling Pathway, G protein signaling, G protein signaling_G-Protein-Coupled Receptors Signaling to MAPK/Erk, IL-6 Receptor Signaling Pathway, Immunology & Inflammation, Innate Immunity_TLR Signaling, Kinase, MAPK-JNK Signaling Pathway, Neurodegenerative Diseases, Neurodegenerative Diseases_Dopamine Signaling in Parkinsons Disease, Neuroscience, Protein phosphorylation, Signal Transduction, T Cell Receptor Signaling Pathway, Toll-like Receptor Signaling Pathway, MAP2K7

Molecular Weight:	47kDa
Gene ID:	5609
UniProt:	O14733
Pathways:	MAPK Signaling , TLR Signaling , Fc-epsilon Receptor Signaling Pathway , Activation of Innate immune Response , Toll-Like Receptors Cascades , BCR Signaling

Application Details

Application Notes:	WB, 1:500 - 1:2000
Restrictions:	For Research Use only

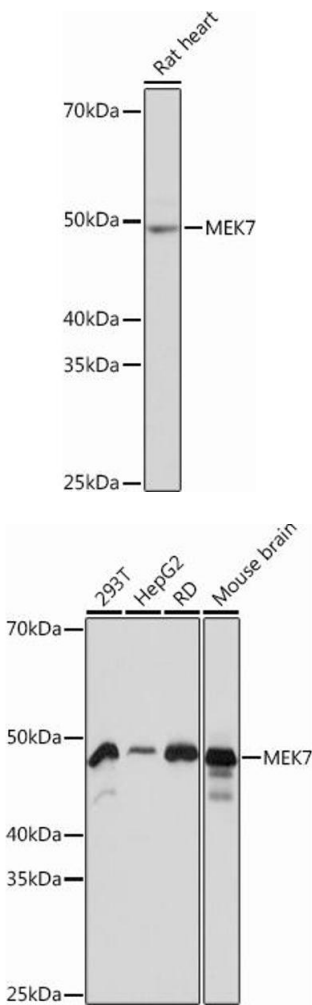
Handling

Format:	Liquid
Buffer:	PBS with 0.02 % sodium azide, 0.05 % BSA, 50 % glycerol, pH 7.3.
Preservative:	Sodium azide
Precaution of Use:	This product contains Sodium azide: a POISONOUS AND HAZARDOUS SUBSTANCE which should be handled by trained staff only.
Storage:	-20 °C

Handling

Storage Comment: Store at -20°C. Avoid freeze / thaw cycles.

Images



Western Blotting

Image 1. Western blot analysis of extracts of Rat heart, using MEK7 Rabbit mAb at 1:1000 dilution. Secondary antibody: HRP Goat Anti-Rabbit IgG (H+L) (ABIN1684268 and ABIN3020597) at 1:10000 dilution. Lysates/proteins: 25 µg per lane. Blocking buffer: 3 % nonfat dry milk in TBST. Detection: ECL Basic Kit (RM00020). Exposure time: 30s.

Western Blotting

Image 2. Western blot analysis of extracts of various cell lines, using MEK7 Rabbit mAb at 1:1000 dilution. Secondary antibody: HRP Goat Anti-Rabbit IgG (H+L) (ABIN1684268 and ABIN3020597) at 1:10000 dilution. Lysates/proteins: 25 µg per lane. Blocking buffer: 3 % nonfat dry milk in TBST. Detection: ECL Basic Kit (RM00020). Exposure time: 3s.