



Datasheet for ABIN7268651
anti-MAP3K3 antibody



[Go to Product page](#)

1 Image

Overview

Quantity:	100 µL
Target:	MAP3K3
Reactivity:	Human
Host:	Rabbit
Clonality:	Monoclonal
Conjugate:	This MAP3K3 antibody is un-conjugated
Application:	Western Blotting (WB)

Product Details

Purpose:	MEKK3 Rabbit mAb
Immunogen:	A synthesized peptide derived from human MEKK3
Isotype:	IgG
Cross-Reactivity:	Human, Mouse
Characteristics:	Monoclonal Antibodies
Purification:	Affinity purification

Target Details

Target:	MAP3K3
Alternative Name:	MAP3K3 (MAP3K3 Products)
Background:	This gene product is a 626-amino acid polypeptide that is 96.5 % identical to mouse Mekk3. Its

Target Details

catalytic domain is closely related to those of several other kinases, including mouse Mekk2, tobacco NPK, and yeast Ste11. Northern blot analysis revealed a 4.6-kb transcript that appears to be ubiquitously expressed. This protein directly regulates the stress-activated protein kinase (SAPK) and extracellular signal-regulated protein kinase (ERK) pathways by activating SEK and MEK1/2 respectively, it does not regulate the p38 pathway. In cotransfection assays, it enhanced transcription from a nuclear factor kappa-B (NFkB)-dependent reporter gene, consistent with a role in the SAPK pathway. Alternatively spliced transcript variants encoding distinct isoforms have been observed. [provided by RefSeq, Jul 2008],MAPKKK3, MEKK3,B Cell Receptor Signaling Pathway,Cell Biology & Developmental Biology,Cell Intrinsic Innate Immunity Signaling Pathway,Cytoskeleton,Cytoskeleton_Actins,Immunology & Inflammation,Innate Immunity_TLR Signaling,Kinase,Kinase_Serine/threonine kinases,MAPK-JNK Signaling Pathway,MAPK-P38 Signaling Pathway,Signal Transduction,Toll-like Receptor Signaling Pathway,MAP3K3

Molecular Weight: 71kDa

Gene ID: 4215

UniProt: [Q99759](#)

Pathways: [MAPK Signaling](#)

Application Details

Application Notes: WB,1:500 - 1:2000

Restrictions: For Research Use only

Handling

Format: Liquid

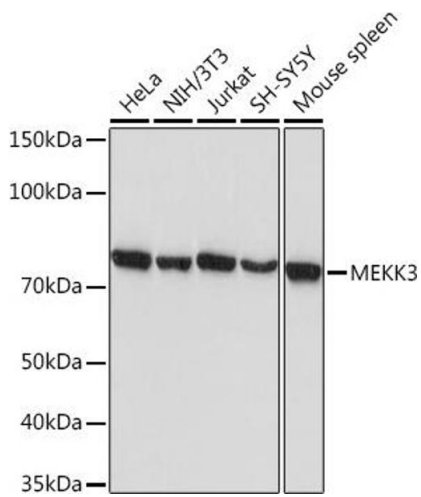
Buffer: PBS with 0.02 % sodium azide,0.05 % BSA,50 % glycerol, pH 7.3.

Preservative: Sodium azide

Precaution of Use: This product contains Sodium azide: a POISONOUS AND HAZARDOUS SUBSTANCE which should be handled by trained staff only.

Storage: -20 °C

Storage Comment: Store at -20°C. Avoid freeze / thaw cycles.



Western Blotting

Image 1. Western blot analysis of extracts of various cell lines, using MEKK3 Rabbit mAb (ABIN7268651) at 1:1000 dilution. Secondary antibody: HRP Goat Anti-Rabbit IgG (H+L) (ABIN1684268 and ABIN3020597) at 1:10000 dilution. Lysates/proteins: 25 µg per lane. Blocking buffer: 3 % nonfat dry milk in TBST. Detection: ECL Basic Kit (RM00020). Exposure time: 10s.