



[Go to Product page](#)

Datasheet for ABIN7268661  
**anti-MAP3K8 antibody (AA 1-100)**

1 Image

Overview

Quantity:	100 µL
Target:	MAP3K8
Binding Specificity:	AA 1-100
Reactivity:	Human
Host:	Rabbit
Clonality:	Polyclonal
Conjugate:	This MAP3K8 antibody is un-conjugated
Application:	Western Blotting (WB)

Product Details

Purpose:	MAP3K8 Rabbit pAb
Immunogen:	A synthetic peptide corresponding to a sequence within amino acids 1-100 of human MAP3K8 (NP_005195.2).
Sequence:	MEYMSTGSDN KEEIDLLIKH LNVSDVIDIM ENLYASEEPA VYEPSLMTMC QDSNQNDERS KSLLLSGQEV PWLSSVRYGT VEDLLAFANH ISNTAKHFYG
Isotype:	IgG
Cross-Reactivity:	Human, Mouse, Rat
Characteristics:	Polyclonal Antibodies
Purification:	Affinity purification

## Target Details

---

Target:	MAP3K8
Alternative Name:	MAP3K8 ( <a href="#">MAP3K8 Products</a> )
Background:	<p>This gene is an oncogene that encodes a member of the serine/threonine protein kinase family. The encoded protein localizes to the cytoplasm and can activate both the MAP kinase and JNK kinase pathways. This protein was shown to activate I<math>\kappa</math>B kinases, and thus induce the nuclear production of NF-<math>\kappa</math>B. This protein was also found to promote the production of TNF-<math>\alpha</math> and IL-2 during T lymphocyte activation. This gene may also utilize a downstream in-frame translation start codon, and thus produce an isoform containing a shorter N-terminus. The shorter isoform has been shown to display weaker transforming activity. Alternate splicing results in multiple transcript variants that encode the same</p> <p>protein.,MAP3K8,AURA2,COT,EST,ESTF,MEKK8,TPL2,Tpl-2,c-COT,Cancer,Signal Transduction,Kinase,Serine/threonine kinases,PI3K-Akt Signaling Pathway,MAPK-Erk Signaling Pathway,MAPK-JNK Signaling Pathway,Cell Biology &amp; Developmental Biology,Cytoskeleton,Actins,Immunology &amp; Inflammation,B Cell Receptor Signaling Pathway,NF-<math>\kappa</math>B Signaling Pathway,MAP3K8</p>
Molecular Weight:	49kDa/52kDa
Gene ID:	1326
UniProt:	<a href="#">P41279</a>
Pathways:	<a href="#">PI3K-Akt Signaling</a> , <a href="#">TCR Signaling</a>

## Application Details

---

Application Notes:	WB,1:500 - 1:2000
Restrictions:	For Research Use only

## Handling

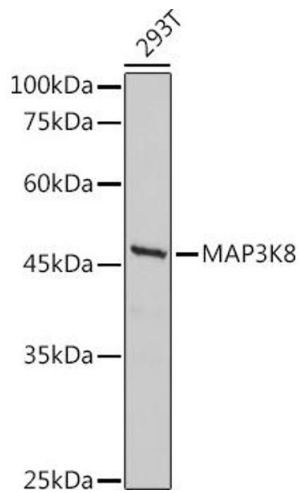
---

Format:	Liquid
Buffer:	PBS with 0.02 % sodium azide,50 % glycerol, pH 7.3.
Preservative:	Sodium azide
Precaution of Use:	This product contains Sodium azide: a POISONOUS AND HAZARDOUS SUBSTANCE which should be handled by trained staff only.
Storage:	-20 °C

## Handling

Storage Comment: Store at -20°C. Avoid freeze / thaw cycles.

## Images



### Western Blotting

**Image 1.** Western blot analysis of extracts of 293T cells, using MK8 antibody (ABIN7268661) at 1:500 dilution. Secondary antibody: HRP Goat Anti-Rabbit IgG (H+L) (ABIN1684268 and ABIN3020597) at 1:10000 dilution. Lysates/proteins: 25 µg per lane. Blocking buffer: 3 % nonfat dry milk in TBST. Detection: ECL Basic Kit (RM00020). Exposure time: 180s.