

Datasheet for ABIN7268671
anti-MLKL antibody (pSer358)



[Go to Product page](#)

1 Image

Overview

Quantity:	100 µL
Target:	MLKL
Binding Specificity:	pSer358
Reactivity:	Human
Host:	Rabbit
Clonality:	Polyclonal
Conjugate:	This MLKL antibody is un-conjugated
Application:	Western Blotting (WB)

Product Details

Purpose:	Phospho-MLKL-S358 Rabbit pAb
Immunogen:	A phospho synthetic peptide corresponding to residues surrounding S358 of human MLKL.
Isotype:	IgG
Cross-Reactivity:	Rat
Characteristics:	Phosphorylated Antibodies
Purification:	Affinity purification

Target Details

Target:	MLKL
Alternative Name:	MLKL (MLKL Products)

Target Details

Background: This gene belongs to the protein kinase superfamily. The encoded protein contains a protein kinase-like domain, however, is thought to be inactive because it lacks several residues required for activity. This protein plays a critical role in tumor necrosis factor (TNF)-induced necroptosis, a programmed cell death process, via interaction with receptor-interacting protein 3 (RIP3), which is a key signaling molecule in necroptosis pathway. Inhibitor studies and knockdown of this gene inhibited TNF-induced necrosis. High levels of this protein and RIP3 are associated with inflammatory bowel disease in children. Alternatively spliced transcript variants have been described for this gene.,MLKL, hMLKL, mixed lineage kinase domain-like protein,Signal Transduction,Kinase,MLKL

Molecular Weight: 53kDa/54kDa

Gene ID: 197259

UniProt: [Q8NB16](#)

Application Details

Application Notes: WB,1:500 - 1:2000

Restrictions: For Research Use only

Handling

Format: Liquid

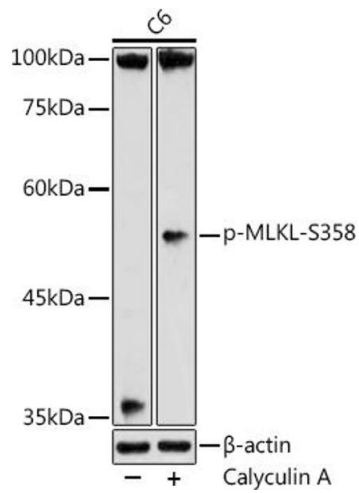
Buffer: PBS with 0.02 % sodium azide,50 % glycerol, pH 7.3.

Preservative: Sodium azide

Precaution of Use: This product contains Sodium azide: a POISONOUS AND HAZARDOUS SUBSTANCE which should be handled by trained staff only.

Storage: -20 °C

Storage Comment: Store at -20°C. Avoid freeze / thaw cycles.



Western Blotting

Image 1. Western blot analysis of extracts of C6 cells, using Phospho-MLKL-S358 antibody (ABIN7268671) at 1:500 dilution. C6 cells were treated by Calyculin A (100 nM) at 37 °C for 30 minutes after serum-starvation overnight. Secondary antibody: HRP Goat Anti-Rabbit IgG (H+L) (ABIN1684268 and ABIN3020597) at 1:10000 dilution. Lysates/proteins: 25 µg per lane. Blocking buffer: 3 % nonfat dry milk in TBST. Detection: ECL Enhanced Kit (RM00021). Exposure time: 180s.