



[Go to Product page](#)

Datasheet for ABIN7268687

## anti-MUC1 antibody

### 7 Images

#### Overview

Quantity:	100 µL
Target:	MUC1
Reactivity:	Human
Host:	Rabbit
Clonality:	Monoclonal
Conjugate:	This MUC1 antibody is un-conjugated
Application:	Immunohistochemistry (IHC), Western Blotting (WB)

#### Product Details

Purpose:	MUC1 Rabbit mAb
Immunogen:	A synthesized peptide derived from human MUC1
Isotype:	IgG
Cross-Reactivity:	Human, Mouse, Rat
Characteristics:	Monoclonal Antibodies
Purification:	Affinity purification

#### Target Details

Target:	MUC1
Alternative Name:	MUC1 ( <a href="#">MUC1 Products</a> )
Background:	This gene encodes a membrane-bound protein that is a member of the mucin family. Mucins

## Target Details

---

are O-glycosylated proteins that play an essential role in forming protective mucous barriers on epithelial surfaces. These proteins also play a role in intracellular signaling. This protein is expressed on the apical surface of epithelial cells that line the mucosal surfaces of many different tissues including lung, breast stomach and pancreas. This protein is proteolytically cleaved into alpha and beta subunits that form a heterodimeric complex. The N-terminal alpha subunit functions in cell-adhesion and the C-terminal beta subunit is involved in cell signaling. Overexpression, aberrant intracellular localization, and changes in glycosylation of this protein have been associated with carcinomas. This gene is known to contain a highly polymorphic variable number tandem repeats (VNTR) domain. Alternate splicing results in multiple transcript variants.[provided by RefSeq, Feb 2011],ADMCKD,ADMCKD1,CA 15-3,CD227,EMA,H23AG,KL-6,MAM6,MCD,MCKD,MCKD1,MUC-1,MUC-1/SEC,MUC-1/X,MUC1/ZD,PEM,PEMT,PUM,MUC1,CA15-3,mucin-1,Cancer,CDs,Cell Biology & Developmental Biology,Cytoskeleton,ErbB-HER Signaling Pathway,Extracellular Matrix,Immunology & Inflammation,Invasion and Metastasis,Protein phosphorylation,Signal Transduction,Tumor immunology,Tumor immunology\_Tumor-associated antigens,MUC1

---

Molecular Weight: 25kDa

---

Gene ID: 4582

---

UniProt: [P15941](#)

---

Pathways: [Negative Regulation of intrinsic apoptotic Signaling](#)

## Application Details

---

Application Notes: WB,1:500 - 1:2000,IHC,1:50 - 1:200

---

Restrictions: For Research Use only

## Handling

---

Format: Liquid

---

Buffer: PBS with 0.02 % sodium azide,0.05 % BSA,50 % glycerol, pH 7.3.

---

Preservative: Sodium azide

---

Precaution of Use: This product contains Sodium azide: a POISONOUS AND HAZARDOUS SUBSTANCE which should be handled by trained staff only.

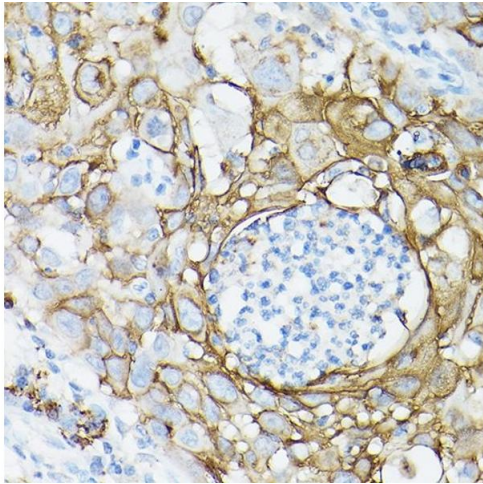
---

Storage: -20 °C

---

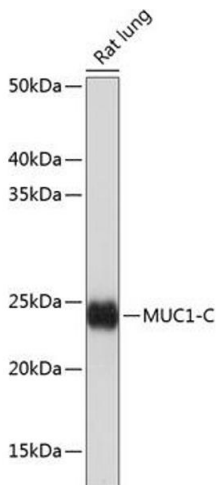
Storage Comment: Store at -20°C. Avoid freeze / thaw cycles.

Images



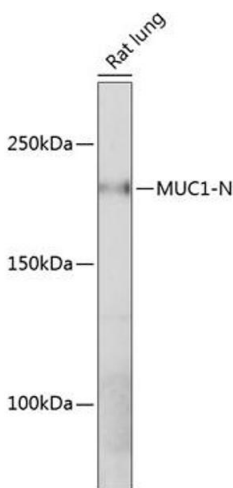
**Immunohistochemistry**

**Image 1.** Immunohistochemistry of paraffin-embedded human lung cancer using MUC1 Rabbit mAb (ABIN7268687) at dilution of 1:100 (40x lens). Perform high pressure antigen retrieval with 10 mM citrate buffer pH 6.0 before commencing with IHC staining protocol.



**Western Blotting**

**Image 2.** Western blot analysis of extracts of Rat lung, using MUC1 antibody (ABIN7268687) at 1:1000 dilution. Secondary antibody: HRP Goat Anti-Rabbit IgG (H+L) (ABIN1684268 and ABIN3020597) at 1:10000 dilution. Lysates/proteins: 25 µg per lane. Blocking buffer: 3 % nonfat dry milk in TBST. Detection: ECL Basic Kit (RM00020). Exposure time: 5s.



**Western Blotting**

**Image 3.** Western blot analysis of extracts of Rat lung, using MUC1 antibody (ABIN7268687) at 1:1000 dilution. Secondary antibody: HRP Goat Anti-Rabbit IgG (H+L) (ABIN1684268 and ABIN3020597) at 1:10000 dilution. Lysates/proteins: 25 µg per lane. Blocking buffer: 3 % nonfat dry milk in TBST. Detection: ECL Enhanced Kit (RM00021). Exposure time: 1 min.

Please check the [product details page](#) for more images. Overall 7 images are available for ABIN7268687.