



[Go to Product page](#)

Datasheet for ABIN7268695  
**anti-Mucolipin 2 (MCOLN2) antibody**

1 Image

### Overview

Quantity:	100 µL
Target:	Mucolipin 2 (MCOLN2)
Reactivity:	Human
Host:	Rabbit
Clonality:	Polyclonal
Conjugate:	Un-conjugated
Application:	Western Blotting (WB)

### Product Details

Purpose:	MCOLN2 Rabbit pAb
Immunogen:	Recombinant protein of human MCOLN2.
Isotype:	IgG
Cross-Reactivity:	Human, Rat
Characteristics:	Polyclonal Antibodies
Purification:	Affinity purification

### Target Details

Target:	Mucolipin 2 (MCOLN2)
Alternative Name:	MCOLN2 ( <a href="#">MCOLN2 Products</a> )
Background:	Mucolipins constitute a family of cation channel proteins with homology to the transient

## Target Details

---

receptor potential superfamily. In mammals, the mucolipin family includes 3 members, MCOLN1 (MIM 605248), MCOLN2, and MCOLN3 (MIM 607400), that exhibit a common 6-membrane-spanning topology. Homologs of mammalian mucolipins exist in Drosophila and C. elegans. Mutations in the human MCOLN1 gene cause mucolipodosis IV (MIM 262650) (Karacsonyi et al., 2007 [PubMed 17662026]).[supplied by OMIM, Sep 2009],TRP-ML2,TRPML2,MCOLN2,Cancer,Endocrine & Metabolism,MCOLN2

Gene ID: 255231

UniProt: [Q8IZK6](#)

## Application Details

---

Application Notes: WB,1:500 - 1:2000

Restrictions: For Research Use only

## Handling

---

Format: Liquid

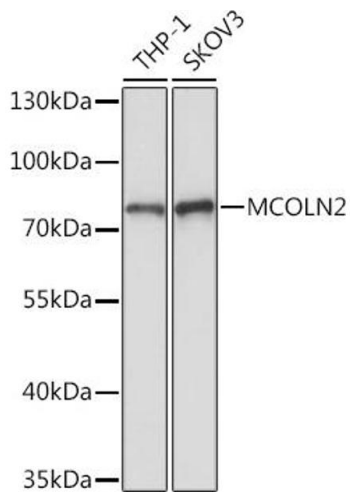
Buffer: PBS with 0.02 % sodium azide,50 % glycerol, pH 7.3.

Preservative: Sodium azide

Precaution of Use: This product contains Sodium azide: a POISONOUS AND HAZARDOUS SUBSTANCE which should be handled by trained staff only.

Storage: -20 °C

Storage Comment: Store at -20°C. Avoid freeze / thaw cycles.



### Western Blotting

**Image 1.** Western blot analysis of extracts of various cell lines, using MCOLN2 Rabbit pAb (ABIN7268695) at 1:1000 dilution. Secondary antibody: HRP Goat Anti-Rabbit IgG (H+L) (ABIN1684268 and ABIN3020597) at 1:10000 dilution. Lysates/proteins: 25 µg per lane. Blocking buffer: 3 % nonfat dry milk in TBST. Detection: ECL Basic Kit (RM00020). Exposure time: 5s.