

Datasheet for ABIN7268701

**anti-MSI2 antibody**

3 Images

[Go to Product page](#)

## Overview

Quantity:	100 µL
Target:	MSI2
Reactivity:	Human
Host:	Rabbit
Clonality:	Monoclonal
Conjugate:	This MSI2 antibody is un-conjugated
Application:	Western Blotting (WB), Immunohistochemistry (IHC)

## Product Details

Purpose:	Musashi-2 (MSI2) Rabbit mAb
Immunogen:	A synthesized peptide derived from human Musashi-2 (Musashi-2 (MSI2))
Isotype:	IgG
Cross-Reactivity:	Human, Mouse, Rat
Characteristics:	Monoclonal Antibodies
Purification:	Affinity purification

## Target Details

Target:	MSI2
Alternative Name:	MSI2 ( <a href="#">MSI2 Products</a> )
Background:	This gene encodes an RNA-binding protein that is a member of the Musashi protein family. The

## Target Details

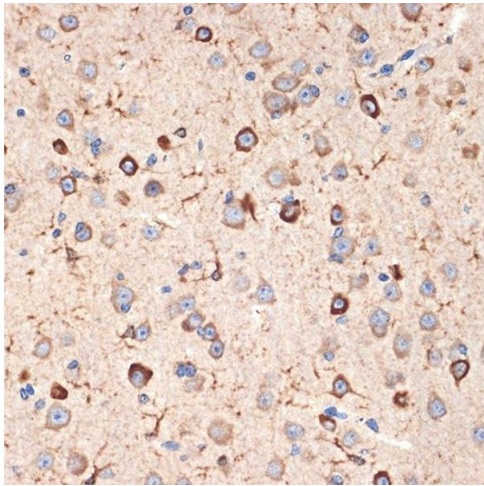
	encoded protein is transcriptional regulator that targets genes involved in development and cell cycle regulation. Mutations in this gene are associated with poor prognosis in certain types of cancers. This gene has also been shown to be rearranged in certain cancer cells. [provided by RefSeq, Apr 2016],MSI2H,Epigenetics & Nuclear Signaling,RNA Binding,MSI2
Molecular Weight:	35kDa
Gene ID:	124540
UniProt:	<a href="#">Q96DH6</a>

## Application Details

Application Notes:	WB,1:500 - 1:2000,IHC,1:50 - 1:200
Restrictions:	For Research Use only

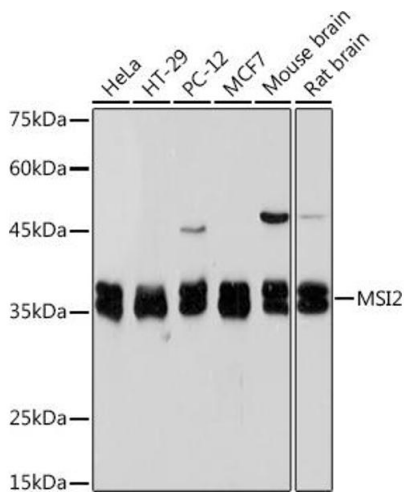
## Handling

Format:	Liquid
Buffer:	PBS with 0.02 % sodium azide,0.05 % BSA,50 % glycerol, pH 7.3.
Preservative:	Sodium azide
Precaution of Use:	This product contains Sodium azide: a POISONOUS AND HAZARDOUS SUBSTANCE which should be handled by trained staff only.
Storage:	-20 °C
Storage Comment:	Store at -20°C. Avoid freeze / thaw cycles.



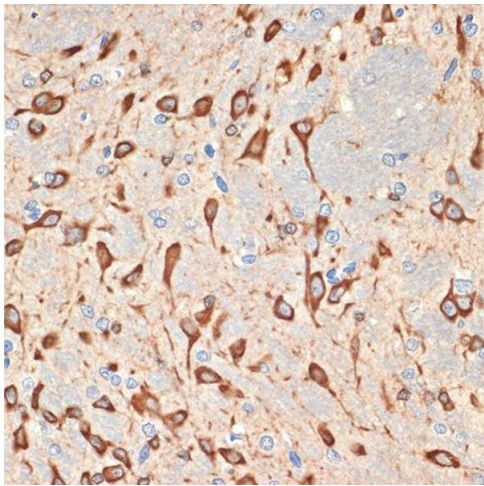
### Immunohistochemistry

**Image 1.** Immunohistochemistry of paraffin-embedded mouse brain using Musashi-2 (Musashi-2 (MSI2)) Rabbit mAb (ABIN7268701) at dilution of 1:100 (40x lens). Perform microwave antigen retrieval with 10 mM Tris/EDTA buffer pH 9.0 before commencing with IHC staining protocol.



### Western Blotting

**Image 2.** Western blot analysis of extracts of various cell lines, using Musashi-2 (Musashi-2 (MSI2)) Rabbit mAb (ABIN7268701) at 1:1000 dilution. Secondary antibody: HRP Goat Anti-Rabbit IgG (H+L) (ABIN1684268 and ABIN3020597) at 1:10000 dilution. Lysates/proteins: 25 µg per lane. Blocking buffer: 3 % nonfat dry milk in TBST. Detection: ECL Basic Kit (RM00020). Exposure time: 5s.



### Immunohistochemistry

**Image 3.** Immunohistochemistry of paraffin-embedded rat brain using Musashi-2 (Musashi-2 (MSI2)) Rabbit mAb (ABIN7268701) at dilution of 1:100 (40x lens). Perform microwave antigen retrieval with 10 mM Tris/EDTA buffer pH 9.0 before commencing with IHC staining protocol.