



[Go to Product page](#)

Datasheet for ABIN7268703  
**anti-MRAS antibody**

1 Image

### Overview

Quantity:	100 µL
Target:	MRAS
Reactivity:	Human
Host:	Rabbit
Clonality:	Monoclonal
Conjugate:	This MRAS antibody is un-conjugated
Application:	Western Blotting (WB)

### Product Details

Purpose:	Mras Rabbit mAb
Immunogen:	Recombinant protein of Human Mras.
Isotype:	IgG
Cross-Reactivity:	Human, Mouse, Rat
Characteristics:	Monoclonal Antibodies
Purification:	Affinity purification

### Target Details

Target:	MRAS
Alternative Name:	Mras ( <a href="#">MRAS Products</a> )
Background:	This gene encodes a member of the Ras family of small GTPases. These membrane-

## Target Details

---

associated proteins function as signal transducers in multiple processes including cell growth and differentiation, and dysregulation of Ras signaling has been associated with many types of cancer. The encoded protein may play a role in the tumor necrosis factor-alpha and MAP kinase signaling pathways. Alternatively spliced transcript variants encoding multiple isoforms have been observed for this gene.,MRAS,M-RAS,R-RAS3,RRAS3,Cancer,Signal Transduction,G protein signaling,Signal Transduction,G2/M DNA Damage Checkpoint,ErbB-HER Signaling Pathway,MAPK-Erk Signaling Pathway,MAPK-JNK Signaling Pathway,Cell Biology & Developmental Biology,Cytoskeleton,Microfilaments,Actins,Extracellular Matrix,Endocrine & Metabolism,Warburg Effect,Immunology & Inflammation,T Cell Receptor Signaling Pathway,IL-6 Receptor Signaling Pathway,NF-kB Signaling Pathway,Mras

---

Molecular Weight: 15kDa/23kDa

---

Gene ID: 22808

---

UniProt: [014807](#)

## Application Details

---

---

Application Notes: WB,1:500 - 1:2000

---

Restrictions: For Research Use only

## Handling

---

---

Format: Liquid

---

Buffer: PBS with 0.02 % sodium azide,0.05 % BSA,50 % glycerol, pH 7.3.

---

Preservative: Sodium azide

---

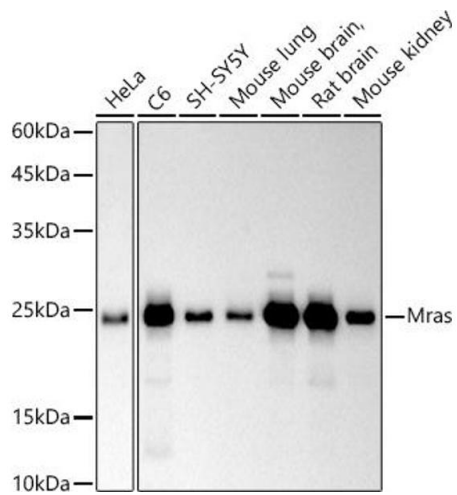
Precaution of Use: This product contains Sodium azide: a POISONOUS AND HAZARDOUS SUBSTANCE which should be handled by trained staff only.

---

Storage: -20 °C

---

Storage Comment: Store at -20°C. Avoid freeze / thaw cycles.



### Western Blotting

**Image 1.** Western blot analysis of extracts of various cell lines, using Mras antibody (ABIN7268703) at 1:500 dilution. Secondary antibody: HRP Goat Anti-Rabbit IgG (H+L) (ABIN1684268 and ABIN3020597) at 1:10000 dilution. Lysates/proteins: 25 µg per lane. Blocking buffer: 3% nonfat dry milk in TBST. Detection: ECL Basic Kit (RM00020). Exposure time: 90s.