



[Go to Product page](#)

Datasheet for ABIN7268710
anti-MSH6 antibody (AA 1-290)

2 Images

Overview

Quantity:	100 µL
Target:	MSH6
Binding Specificity:	AA 1-290
Reactivity:	Human
Host:	Rabbit
Clonality:	Polyclonal
Conjugate:	This MSH6 antibody is un-conjugated
Application:	Western Blotting (WB), Immunohistochemistry (IHC), Immunofluorescence (IF)

Product Details

Purpose:	MSH6 Rabbit pAb
Immunogen:	Recombinant fusion protein containing a sequence corresponding to amino acids 1-290 of human MSH6 (NP_000170.1).
Sequence:	MSRQSTLYSF FPKSPALSDA NKASARASRE GGRAAAAPGA SPSPGGDAAW SEAGPGPRPL ARSASPPKAK NLNGGLRRSV APAAPTSCDF SPGDLVWAKM EGYPPWWPCLV YNHPFDGTFI REK GKSVRVH VQFFDDSPTR GWVSKRLLKP YTGSKSKEAQ KGGHFYSAKP EILRAMQRAD EALNKDKIKR LELAVCDEPS EPEEEEEEMEV GTTYVTDKSE EDNEIESEEE VQPKTQGSRR SSRQIKKRRV ISDSESDIGG SDVEFKPDTK EEGSSDEISS GVG DSESEGL
Isotype:	IgG
Cross-Reactivity:	Human, Mouse, Rat
Characteristics:	Polyclonal Antibodies

Product Details

Purification: Affinity purification

Target Details

Target: MSH6

Alternative Name: MSH6 ([MSH6 Products](#))

Background: This gene encodes a member of the DNA mismatch repair MutS family. In *E. coli*, the MutS protein helps in the recognition of mismatched nucleotides prior to their repair. A highly conserved region of approximately 150 aa, called the Walker-A adenine nucleotide binding motif, exists in MutS homologs. The encoded protein heterodimerizes with MSH2 to form a mismatch recognition complex that functions as a bidirectional molecular switch that exchanges ADP and ATP as DNA mismatches are bound and dissociated. Mutations in this gene may be associated with hereditary nonpolyposis colon cancer, colorectal cancer, and endometrial cancer. Transcripts variants encoding different isoforms have been described.,MSH6,GTBP,GTMBP,HNPCC5,HSAP,p160,Epigenetics & Nuclear Signaling,DNA Damage & Repair,Cell Biology & Developmental Biology,Apoptosis,MSH6

Molecular Weight: 119kDa/120kDa/137kDa/152kDa

Gene ID: 2956

UniProt: [P52701](#)

Pathways: [DNA Damage Repair](#), [Chromatin Binding](#), [Production of Molecular Mediator of Immune Response](#)

Application Details

Application Notes: WB,1:500 - 1:2000,IHC,1:50 - 1:200,IF,1:50 - 1:200

Restrictions: For Research Use only

Handling

Format: Liquid

Buffer: PBS with 0.02 % sodium azide,50 % glycerol, pH 7.3.

Preservative: Sodium azide

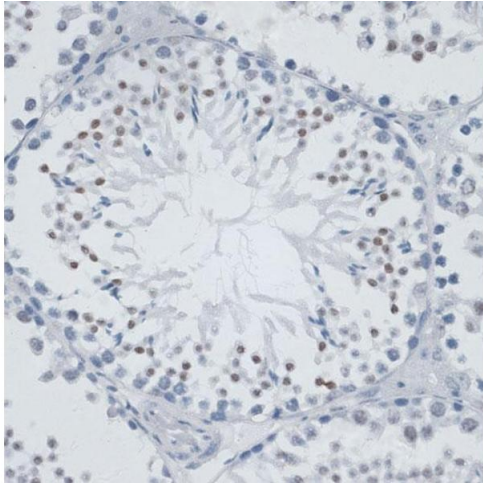
Precaution of Use: This product contains Sodium azide: a POISONOUS AND HAZARDOUS SUBSTANCE which should be handled by trained staff only.

Handling

Storage: -20 °C

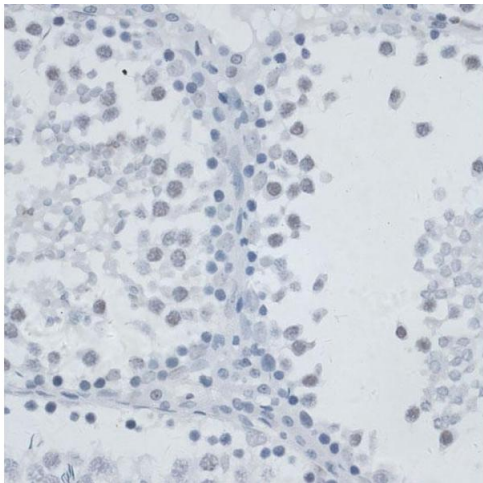
Storage Comment: Store at -20°C. Avoid freeze / thaw cycles.

Images



Immunohistochemistry

Image 1. Immunohistochemistry of paraffin-embedded mouse testis using MSH6 antibody (ABIN7268710) at dilution of 1:100 (40x lens). Perform microwave antigen retrieval with 10 mM PBS buffer pH 7.2 before commencing with IHC staining protocol.



Immunohistochemistry

Image 2. Immunohistochemistry of paraffin-embedded rat testis using MSH6 antibody (ABIN7268710) at dilution of 1:100 (40x lens). Perform microwave antigen retrieval with 10 mM PBS buffer pH 7.2 before commencing with IHC staining protocol.