



Datasheet for ABIN7268718

## anti-MAG antibody



[Go to Product page](#)

### 3 Images

#### Overview

Quantity:	100 µL
Target:	MAG
Reactivity:	Human
Host:	Rabbit
Clonality:	Monoclonal
Conjugate:	This MAG antibody is un-conjugated
Application:	Western Blotting (WB)

#### Product Details

Purpose:	MAG Rabbit mAb
Immunogen:	A synthesized peptide derived from human MAG
Isotype:	IgG
Cross-Reactivity:	Human, Mouse, Rat
Characteristics:	Monoclonal Antibodies
Purification:	Affinity purification

#### Target Details

Target:	MAG
Alternative Name:	MAG ( <a href="#">MAG Products</a> )
Background:	The protein encoded by this gene is a type I membrane protein and member of the

## Target Details

---

immunoglobulin superfamily. It is thought to be involved in the process of myelination. It is a lectin that binds to sialylated glycoconjugates and mediates certain myelin-neuron cell-cell interactions. Three alternatively spliced transcripts encoding different isoforms have been described for this gene. [provided by RefSeq, Nov 2010],GMA, S-MAG, SIGLEC-4A, SIGLEC4A, SPG75,Cell Adhesion,Cell Biology & Developmental Biology,Neuroscience,MAG

---

Molecular Weight: 100kDa

---

Gene ID: 4099

---

UniProt: [P20916](#)

---

Pathways: [Neurotrophin Signaling Pathway](#)

## Application Details

---

---

Application Notes: WB,1:500 - 1:2000

---

Restrictions: For Research Use only

## Handling

---

---

Format: Liquid

---

Buffer: PBS with 0.02 % sodium azide,0.05 % BSA,50 % glycerol, pH 7.3.

---

Preservative: Sodium azide

---

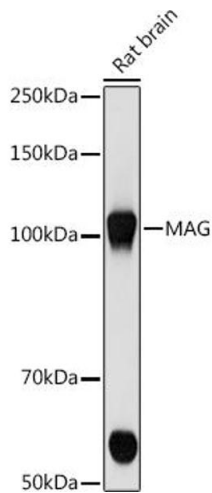
Precaution of Use: This product contains Sodium azide: a POISONOUS AND HAZARDOUS SUBSTANCE which should be handled by trained staff only.

---

Storage: -20 °C

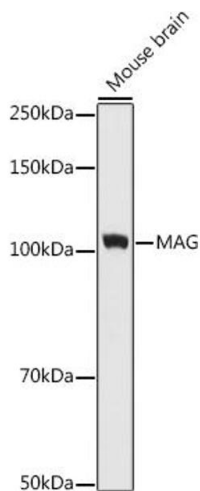
---

Storage Comment: Store at -20°C. Avoid freeze / thaw cycles.



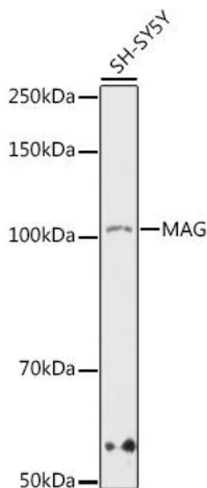
### Western Blotting

**Image 1.** Western blot analysis of extracts of Rat brain cells, using MAG antibody (ABIN7268718) at 1:500 dilution. Secondary antibody: HRP Goat Anti-Rabbit IgG (H+L) (ABIN1684268 and ABIN3020597) at 1:10000 dilution. Lysates/proteins: 25 µg per lane. Blocking buffer: 3 % nonfat dry milk in TBST. Detection: ECL Basic Kit (RM00020). Exposure time: 10s.



### Western Blotting

**Image 2.** Western blot analysis of extracts of Mouse brain cells, using MAG antibody (ABIN7268718) at 1:1000 dilution. Secondary antibody: HRP Goat Anti-Rabbit IgG (H+L) (ABIN1684268 and ABIN3020597) at 1:10000 dilution. Lysates/proteins: 25 µg per lane. Blocking buffer: 3 % nonfat dry milk in TBST. Detection: ECL Basic Kit (RM00020). Exposure time: 180s.



### Western Blotting

**Image 3.** Western blot analysis of extracts of SH-SY5Y cells, using MAG antibody (ABIN7268718) at 1:1000 dilution. Secondary antibody: HRP Goat Anti-Rabbit IgG (H+L) (ABIN1684268 and ABIN3020597) at 1:10000 dilution. Lysates/proteins: 25 µg per lane. Blocking buffer: 3 % nonfat dry milk in TBST. Detection: ECL Enhanced Kit (RM00021). Exposure time: 180s.