



[Go to Product page](#)

Datasheet for ABIN7268725  
**anti-MLF2 antibody (AA 1-65)**

4 Images

Overview

Quantity:	100 µL
Target:	MLF2
Binding Specificity:	AA 1-65
Reactivity:	Human
Host:	Rabbit
Clonality:	Polyclonal
Conjugate:	This MLF2 antibody is un-conjugated
Application:	Western Blotting (WB), Immunohistochemistry (IHC)

Product Details

Purpose:	MLF2 Rabbit pAb
Immunogen:	Recombinant fusion protein containing a sequence corresponding to amino acids 1-65 of human MLF2 (NP_005430.1).
Sequence:	MFRFMRDVEP EDPMFLMDPF AIHRQHMSRM LSGGFGYSPF LSITDGNMPG TRPASRRMQQ AGAVS
Isotype:	IgG
Cross-Reactivity:	Human, Mouse, Rat
Characteristics:	Polyclonal Antibodies
Purification:	Affinity purification

## Target Details

Target:	MLF2
Alternative Name:	MLF2 ( <a href="#">MLF2 Products</a> )
Background:	MLF2,NTN4,Cell Biology & Developmental Biology,MLF2
Molecular Weight:	28kDa
Gene ID:	8079
UniProt:	<a href="#">Q15773</a>

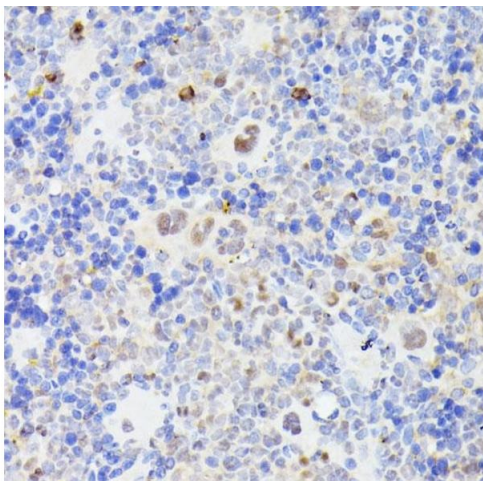
## Application Details

Application Notes:	WB,1:500 - 1:2000,IHC,1:100 - 1:200
Restrictions:	For Research Use only

## Handling

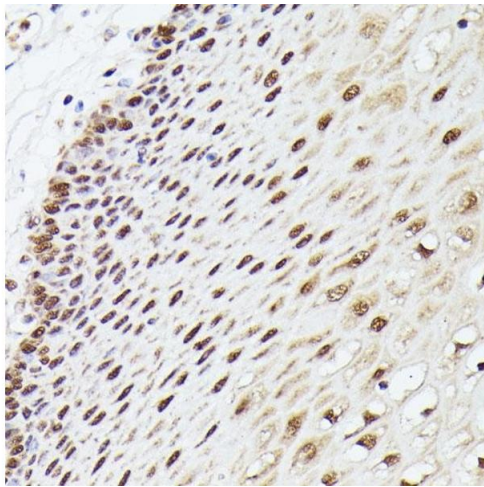
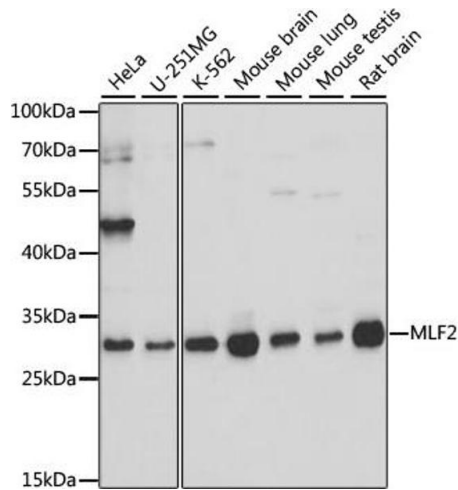
Format:	Liquid
Buffer:	PBS with 0.02 % sodium azide,50 % glycerol, pH 7.3.
Preservative:	Sodium azide
Precaution of Use:	This product contains Sodium azide: a POISONOUS AND HAZARDOUS SUBSTANCE which should be handled by trained staff only.
Storage:	-20 °C
Storage Comment:	Store at -20°C. Avoid freeze / thaw cycles.

## Images



### Immunohistochemistry

**Image 1.** Immunohistochemistry of paraffin-embedded mouse spleen using MLF2 antibody (ABIN7268725) at dilution of 1:100 (40x lens). Perform microwave antigen retrieval with 10 mM PBS buffer pH 7.2 before commencing with IHC staining protocol.



### Western Blotting

**Image 2.** Western blot analysis of extracts of various cell lines, using MLF2 antibody (ABIN7268725) at 1:1000 dilution. Secondary antibody: HRP Goat Anti-Rabbit IgG (H+L) (ABIN1684268 and ABIN3020597) at 1:10000 dilution. Lysates/proteins: 25 µg per lane. Blocking buffer: 3 % nonfat dry milk in TBST. Detection: ECL Basic Kit (RM00020). Exposure time: 5s.

### Immunohistochemistry

**Image 3.** Immunohistochemistry of paraffin-embedded human esophageal using MLF2 antibody (ABIN7268725) at dilution of 1:100 (40x lens). Perform microwave antigen retrieval with 10 mM PBS buffer pH 7.2 before commencing with IHC staining protocol.

Please check the [product details page](#) for more images. Overall 4 images are available for ABIN7268725.