

Datasheet for ABIN7268731
anti-MEF2B antibody (AA 1-100)[Go to Product page](#)

1 Image

Overview

Quantity:	100 µL
Target:	MEF2B
Binding Specificity:	AA 1-100
Reactivity:	Human
Host:	Rabbit
Clonality:	Polyclonal
Conjugate:	This MEF2B antibody is un-conjugated
Application:	Western Blotting (WB)

Product Details

Purpose:	MEF2B Rabbit pAb
Immunogen:	A synthetic peptide corresponding to a sequence within amino acids 1-100 of human MEF2B (NP_005910.1).
Sequence:	MGRKKIQISR ILQQRNRQVT FTKRKFGMLK KAYELSVLCD CEIALIIFNS ANRLFQYAST DMDRVLLKYT EYSEPHESRT NTDILETLKR RGIGLDGPEL
Isotype:	IgG
Cross-Reactivity:	Mouse
Characteristics:	Polyclonal Antibodies
Purification:	Affinity purification

Target Details

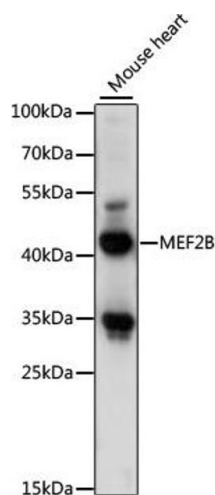
Target:	MEF2B
Alternative Name:	MEF2B (MEF2B Products)
Background:	The product of this gene is a member of the MADS/MEF2 family of DNA binding proteins. The protein is thought to regulate gene expression, including expression of the smooth muscle myosin heavy chain gene. This region undergoes considerable alternative splicing, with transcripts supporting two non-overlapping loci (GeneID 729991 and 100271849) as well as numerous read-through transcripts that span both loci (annotated as GeneID 4207). Several isoforms of this protein are expressed from either this locus or from some of the read-through transcripts annotated on GeneID 4207.,MEF2B,RSRFR2,MEF2B
Molecular Weight:	38kDa/39kDa
Gene ID:	100271849
UniProt:	Q02080

Application Details

Application Notes:	WB,1:500 - 1:2000
Restrictions:	For Research Use only

Handling

Format:	Liquid
Buffer:	PBS with 0.02 % sodium azide,50 % glycerol, pH 7.3.
Preservative:	Sodium azide
Precaution of Use:	This product contains Sodium azide: a POISONOUS AND HAZARDOUS SUBSTANCE which should be handled by trained staff only.
Storage:	-20 °C
Storage Comment:	Store at -20°C. Avoid freeze / thaw cycles.



Western Blotting

Image 1. Western blot analysis of extracts of mouse heart, using MEF2B antibody (ABIN7268731) at 1:1000 dilution. Secondary antibody: HRP Goat Anti-Rabbit IgG (H+L) (ABIN1684268 and ABIN3020597) at 1:10000 dilution. Lysates/proteins: 25 µg per lane. Blocking buffer: 3 % nonfat dry milk in TBST. Detection: ECL Basic Kit (RM00020). Exposure time: 1s.